

# TEAM NW EQUESTRIAN SPORTS

**OREGON SUMMER AUGUST 24-28, 2022**

WCHR MEMBER EVENT, USEF NATIONAL RATED, JUMPER LEVEL II

\$6,500 USHJA National Hunter Derby Regional Championship

\$10,000 USHJA Green Hunter Incentive Regional Championship

OHJA Medal Finals

OHJA Equitation Challenge Benefit

**NORTHWEST SPECTACULAR AUGUST 31- SEPTEMBER 4, 2022**

WCHR MEMBER EVENT, USEF NATIONAL RATED, JUMPER LEVEL III

USHJA Zone IX Jumper & Equitation Championships

\$20,000 USHJA International Hunter Derby Regional Championship

HUNTER CREEK EQUESTRIAN PARK - WILSONVILLE, OR






**CWD**  
We care. You ride.



**2G<sup>s</sup>**  
*Mademoiselle*





LEWIS & CLARK  
COLLEGE LAW SCHOOL

- ADJUNCT LAW  
PROFESSOR, EQUINE  
LAW 2013/2014

OREGON STATE BAR  
ANIMAL LAW SECTION

- CHAIR, 2012-2013
- CHAIR ELECT, 2011

OREGON HORSE COUNTRY

- CHAIR, 2014, 2015, 2017
- VICE CHAIR, 2013

OREGON HUNTER  
JUMPER ASSOCIATION

- PRESIDENT, 2007, 2009 - 2013
- VICE PRESIDENT, 2006, 2008, 2014, 2017-2018

MEMBER

- US DRESSAGE FEDERATION
- US EQUESTRIAN FEDERATION
- OREGON DRESSAGE SOCIETY
- US HUNTER JUMPER ASSOCIATION
- WASHINGTON STATE BAR ASSOCIATION  
ANIMAL LAW SECTION

# Kathryn A. Hall PC

ATTORNEY *at* LAW

OREGON AND WASHINGTON • 971-404-5296 • PNWEQUINELAW.COM

Horse sales, leases, and breeding • Boarding, training, and riding instruction • Risk assessment and management  
• Ownership and registration • Business entity formation, governance, taxation, and employment •  
Veterinary malpractice and negligence • Horse and rider injuries • Debt collection and creditors' rights

# TEAM NW

## EQUESTRIAN SPORTS

---

### OREGON SUMMER

*August 24 - 28, 2022*

Entries Close August 3rd+6

**Hunter Creek Equestrian Park - Wilsonville, OR**

*USEF National Rated ~ USEF Jumper Rated 2*

Hunter/Equitation Judge.....Mrs. Cyndi Merritt - *Mineral Wells, TX*  
Hunter/Equitation Judge.....Ms. Andrea Wells - *Ocala, FL*  
Hunter/Equitation Judge.....Mr. James Waldman - *Vista, CA*  
Hunter/Equitation Judge.....Mr. Kerry Kocher - *Centre Hall, PA*

Jumper Judge.....Mr. Max Von Zimmermann - *Selah, WA*

Course Designer.....Tommy Brawley - *Marshall, TX*

Course Designer.....Mike Gallaway - *Eugene, OR*

USEF Steward.....Ms. Joan Shelton-Palelek - *Vancouver, WA*

Licensee.....Campf Horse Shows & Productions, Inc.

Show Manager.....Mike Gallaway - *Eugene, OR*

*(541) 954-5312*

Community Relations & Sponsorship.....Chad Campf - *Aurora, OR*

*(503) 970-7375*

Show Secretary.....Mollie Gallaway - *Eugene, OR*

*(541) 914-0052*

Veterinarian.....Lisa Campbell, DVM - *Oregon City, OR*

*(971) 269-9207*

Farrier.....TBA

Photographer .....Grand Pix - *Thermal, CA*

*[www.grandpixphoto.com](http://www.grandpixphoto.com)*

Social Media and Website.....Kindy Poole - *Portland, OR*

Nearest Hospital.....Providence Newberg Medical Center 1001 Providence Dr. Newberg, OR 97132

**9.5 miles from the Hunter Creek**

Nearest Level I Trauma Center OHSU Hospital 3181 SW Sam Jackson Park Rd, Portland OR 97239

**20 miles from the Hunter Creek**

Nearest Veterinary Hospital.....OSU Veterinary Hospital 172 Magruder Hall, Corvallis, OR 97331

**71.5 miles from Hunter Creek**

---

W W W . T E A M N W E Q U E S T R I A N S P O R T S . C O M

# Oregon Summer #322790: National Hunter, Jumper 2 Northwest Spectacular #322791: National Hunter, Jumper 3

FINALLY,

## THE INSURANCE YOU NEED AT A PRICE YOU CAN AFFORD



### HEALTH & INSURANCE BENEFITS



Now with just a few clicks, you can purchase the valuable coverage you and your family need.

You deserve the peace of mind that comes with having affordable, easy-to-understand benefits for you and your family. Now with your paid-fan or competing **USEF Membership**, you can sign up for a range of benefits from well-known, established insurance companies, with savings up to 35% or more!

### You Can Get Coverage For...



Individual/  
Family Health  
Insurance



Teledoc



Global Health  
Insurance



Personal Liability,  
Death & Disability  
Insurance



Group Health  
Insurance



Free Mental  
Health First Aid



Ground & Air  
Ambulance



Financial  
Lock



Dental, Vision, Disability, Accident,  
Critical Illness, and Life Insurance



Farm, Equine & Pet Insurance

 These benefits can be customized for individuals, families, business owners, executives, and your employees

Visit **USEF.org/insurance** to learn more and find your rate today.  
Or call us at **(800) 349-1082** to speak with your USEF benefits team.



**HUNTERS***class index***OREGON SUMMER****Rated Hunter Sections - Hunter/Equitation Nominating Fee \$50**

<b><i>DIVISION/CLASS</i></b>	<b><i>HEIGHT</i></b>	<b><i>CLASS NUMBER</i></b>	<b><i>DIVISION FEE</i></b>	<b><i>CLASS FEE</i></b>	<b><i>PRIZE \$</i></b>
Young Hunter 2'9" Open to horses 5 years old and younger	2'9"	6, 7, 8, 9, 10	\$200	-	-
Young Hunter 3' Open to horses 6 years old and younger	3'	16, 17, 18, 19, 20	\$200	-	-
Young Hunter 3'3" Open to horses 7 years old and younger	3'3"	212, 213, 214, 215, 216	\$200	-	-
Green Hunter 3'	3'	21, 22, 23, 24, 25	\$275	-	\$350
Green Hunter 3'3"	3'3"	26, 27, 28, 29, 30	\$275	-	\$350
Green Hunter 3'6"	3'6"	46, 47, 48, 49, 50	\$275	-	\$750
Green Hunter 3'9"	3'9"	51, 52, 53, 54, 55	\$275	-	\$750
Conformation Hunter Model	-	56	-	\$35	-
Conformation Hunter	3'6"/3'9"	57, 58, 59, 60, 61	\$275	-	\$750
Performance Hunter 3'3'	3'3"	41, 42, 43, 44, 45	\$275	\$55	\$750
Performance Hunter 3'6'	3'6"	67, 68, 69, 70, 71	\$275	\$55	\$750
High Performance Hunter	3'9"	62, 63, 64, 65, 66	\$300	\$70	\$1,000
Amateur Owner Hunter 18-35	3'6"	72, 73, 74, 75, 76	\$275	-	\$500
Amateur Owner Hunter 36 & Over	3'6"	77, 78, 79, 80, 81	\$275	-	\$500
Amateur Owner Hunter 3'3" 18-35	3'3"	152, 153, 154, 155, 156	\$275	-	\$500
Amateur Owner Hunter 3'3" 36 & Over	3'3"	238, 239, 240, 241, 242	\$275	-	\$500
Small Junior Hunter 15 & Under	3'6"	97, 98, 99, 100, 101	\$275	-	\$500
Small Junior Hunter 16-17	3'6"	102, 103, 104, 105, 106	\$275	-	\$500
Large Junior Hunter 15 & Under	3'6"	107, 108, 109, 110, 111	\$275	-	\$500
Large Junior Hunter 16-17	3'6"	112, 113, 114, 115, 116	\$275	-	\$500
Junior Hunter 3'3" Small 15 & Under	3'3"	207, 208, 209, 210, 211	\$275	-	\$500
Junior Hunter 3'3" Large 15 & Under	3'3"	514, 515, 516, 517, 518	\$275	-	\$500
Junior Hunter 3'3" Small 16-17	3'3"	519, 520, 521, 522, 523	\$275	-	\$500
Junior Hunter 3'3" Large 16-17	3'3"	524, 525, 526, 527, 528	\$275	-	\$500
Small Pony Hunter	2'3"	127, 128, 129, 130, 131	\$250	-	\$400
Medium Pony Hunter	2'6"	132, 133, 134, 135, 136	\$250	-	\$400
Large Pony Hunter	3'	137, 138, 139, 140, 141	\$250	-	\$400
Small/Medium Green Pony	2'3"-2'6"	142, 143, 144, 145, 146	\$250	-	\$250
Large Green Pony Hunter	2'9"	167, 168, 169, 170, 171	\$250	-	\$250

**C-Rated Hunter Sections - Hunter/Equitation Nominating Fee \$50**

<b>DIVISION/CLASS</b>	<b>HEIGHT</b>	<b>CLASS NUMBER</b>	<b>DIVISION FEE</b>	<b>CLASS FEE</b>	<b>PRIZE \$</b>
TAKE2 Thoroughbred Hunter Open to Jockey Club registered Thoroughbreds.	3'	228, 229, 230, 231, 232	\$220	\$55	-
Small Hunter Open to horses over 14.2 but not over 16.0 hands.	3'	31, 32, 33, 34, 35	\$220	\$55	-
Adult Hunter 18-39	3'	82, 83, 84, 85, 86	\$220	\$55	-
Adult Hunter 40-55	3'	87, 88, 89, 90, 91	\$220	\$55	-
Adult Hunter 56 & Over	3'	92, 93, 94, 95, 96	\$220	\$55	-
Children's Hunter 13 & Under	3'	117, 118, 119, 120, 121	\$220	\$55	-
Children's Hunter 14-17	3'	122, 123, 124, 125, 126	\$220	\$55	-
Children's Hunter Pony	2'/2'3"/2'6"	147, 148, 149, 150, 151	\$220	\$55	-
USHJA 2' Hunter	2'	233, 234, 235, 236, 237	\$220	\$55	-
USHJA 2'3" Hunter	2'3"	243, 244, 245, 246, 247	\$220	\$55	-
USHJA 2'6" Hunter	2'6"	11, 12, 13, 14, 15	\$220	\$55	-
USHJA 2'9" Hunter	2'9"	248, 249, 250, 251, 252	\$220	\$55	-
USHJA 3' Hunter	3'	253, 254, 255, 256, 257	\$220	\$55	-

**Non-Rated Hunter Sections - Hunter/Equitation Nominating Fee \$50**

<b>DIVISION/CLASS</b>	<b>HEIGHT</b>	<b>CLASS NUMBER</b>	<b>DIVISION FEE</b>	<b>CLASS FEE</b>
Schooling Hunter Open to all hunters and ponies. See schedule for fence heights.	-	276, 287, 289, 290, 291, 294	-	\$55
Baby Green Hunter Open to a horse of any age in its first year of showing.	2'6"	1, 2, 3, 4, 5	\$220	\$55
Large Hunter Open to horse 16.0 hands and over. Fences 3'.	3'	36, 37, 38, 39, 40	\$220	\$55
Short Stirrup Hunter Pony Open to any pony and junior rider. Rider may not cross enter into any hunter class with fences above 2'3". May be combined with short Stirrup Horse. Respective heights.	18"	182, 183, 184, 185, 186	\$220	\$55
Short Stirrup Hunter Horse Open to any horse and junior rider. Rider may not cross enter into any hunter class with fences at 2'9" or higher.	2'-2'3"	187, 188, 189, 190, 191	\$220	\$55
Long Stirrup Hunter Open to any horse and amateur rider. Rider may not cross enter into any hunter class with fences at 2'9" or higher.	2'-2'3"	192, 193, 194, 195, 196	\$220	\$55
Modified Child Hunter Open to any horse and junior rider. Rider may not cross enter into any class with fences exceeding 3'.	2'9"	172, 173, 174, 175, 176	\$220	\$55
Modified Adult Hunter Open to any horse and amateur rider. Rider may not cross enter into any class with fences exceeding 3'.	2'9"	177, 178, 179, 180, 181	\$220	\$55
Low Children's Hunter Open to junior riders. ZONE SPECIFICATIONS will be followed	2'6"	202, 203, 204, 205, 206	\$220	\$55
Low Adult Hunter Open to amateur riders. ZONE SPECIFICATIONS will be followed	2'6"	197, 198, 199, 200, 201	\$220	\$55

**Opportunity Sections**

<b>DIVISION/CLASS</b>	<b>HEIGHT</b>	<b>CLASS NUMBER</b>	<b>DIVISION FEE</b>	<b>CLASS FEE</b>
Walk Trot Hunter Opportunity	-	701,702,703	-	\$30
Walk Trot Equitation Opportunity	-	704,705,706	-	\$30



# EQUITATION

## class index

### Equitation Sections - Hunter/Equitation Nominating Fee \$50

DIVISION/CLASS	HEIGHT	CLASS NUMBER	DIVISION FEE	CLASS FEE
Equitation 11 & Under No cross entry into Restricted Equitation	3'	312, 313, 314	\$150	\$55
Equitation 12-14 No cross entry into Restricted Equitation	3'	300, 301, 302	\$150	\$55
Equitation 15 - 17 No cross entry into Restricted Equitation	3'	309, 310, 311	\$150	\$55
Adult Equitation 18-39	3'	330, 331, 332	\$150	\$55
Adult Equitation 40-55	3'	327, 328, 329	\$150	\$55
Adult Equitation 56 & Over	3'	333, 334, 335	\$150	\$55
Pony Equitation	2'3", 2'6", 2'9"	315, 316, 317	\$150	\$55
Restricted Equitation 13 & Under Open to junior riders. Rider may not cross enter into any class with fences exceeding 3'3".	3'	303, 304, 305	\$150	\$55
Restricted Equitation 14 - 17 Open to junior riders. Rider may not cross enter into any class with fences exceeding 3'3".	3'	306, 307, 308	\$150	\$55
Modified Child/Adult Equitation Riders may not cross enter into any class exceeding 3'.	2'9"	379, 380, 381	\$150	\$55
Low Adult Equitation Open to amateur riders. Riders may not cross enter into any class exceeding 2'9".	2'6"	336, 337, 338	\$150	\$55
Low Child Equitation Open to junior riders. Riders may not cross enter into any class exceeding 2'9".	2'6"	318, 319, 320	\$150	\$55
Long Stirrup Equitation Open to any amateur rider. Riders may not cross enter into any class with fences exceeding 2'6".	2'3"	324, 325, 326	\$150	\$55
Short Stirrup Equitation Open to any junior rider. Riders may not cross enter into any class with fences exceeding 2'6".	2'3"	321, 322, 323	\$150	\$55
Children's Pony Equitation Open to any pony and junior rider. Rider may not cross enter any equitation class with fences at 3' or higher.	2', 2'3", 2'6"	162, 163, 164	\$150	\$55

### Medal Section - Hunter/Equitation Nominating Fee \$50

CLASS	HEIGHT	CLASS NUMBER	CLASS FEE
Hamel Foundation NHS 3'3" Medal	3'3"	373	\$55
Dover Saddlery/USEF Hunter Seat Medal	3'6"	350	\$55
ASPCA Horsemanship Class	3'6"	351	\$55
WIHS Equitation Classic Hunter Phase	3'6"	353	\$55
WIHS Equitation Classic Jumper Phase	3'6"	354	\$55
WIHS Equitation Classic Combined	-	355	-
OHJA Foundation Medal *Last Chance Qualifier.	2'3"	165	\$55
OHJA Mini Medal *Last Chance Qualifier.	2'6"	358	\$55
OHJA Children's Medal *Last Chance Qualifier.	3'	359	\$55
OHJA Adult Medal *Last Chance Qualifier.	3'	360	\$55
OHJA Junior/Senior Medal 3'3" *Last Chance Qualifier.	3'3"	361	\$55
OHJA Junior/Senior Medal *Last Chance Qualifier.	3'6"	362	\$55
THIS Children's Medal	3'	363	\$55
THIS NHS Adult Medal	3'	374	\$55
Ariat National Adult Medal	3'	364	\$55
USEF Adult Medal	3'3"	356	\$55
Marshall & Sterling U.S. Pony Medal	2'3/2'6"/3'	357	\$55
EMO Insurance/USHJA Jumping Seat Medal 3'3"	3'3"	371	\$55
USHJA Hunter Seat Medal 3'3"	3'3"	375	\$55
Platinum Performance/USEF Talent Search 1*	3'9"	352	\$55
USEF/NCEA Junior Hunter Seat Medal	3'3"	372	\$55
WSHJA Good Seat & Hands Class 2'6"	2'6"	376	\$55
WSHJA Good Seat & Hands Class 3'	3'	377	\$55
WSHJA Good Seat & Hands Class 3'6"	3'6"	378	\$55



**OHJA Medal Finals**

<b>CLASS</b>	<b>HEIGHT</b>	<b>CLASS NUMBER</b>	<b>CLASS FEE</b>	<b>POST ENTRY FEE</b>
OHJA Foundation Medal Final	2'	661	\$100	\$10
OHJA Junior Mini Medal Final	2'6"	656	\$100	\$10
OHJA Adult Mini Medal Final	2'6"	657	\$100	\$10
OHJA Children's Medal Final	3'	658	\$100	\$10
OHJA Adult Medal Final	3'	659	\$100	\$10
OHJA Junior/Senior 3'3" Medal Final	3'3"	662	\$100	\$10
OHJA Junior/Senior Medal Final	3'6"	660	\$100	\$10

**Nominated Jumper Sections - High Jumper Nomination Fee \$150**

<b>DIVISION/CLASS</b>	<b>HEIGHT</b>	<b>CLASS NUMBER</b>	<b>CLASS FEE</b>	<b>PRIZE \$</b>
Low Junior/Amateur Jumper	1.25m	473, 474, 475	\$60	\$600
1.20m Jumper	1.20m	440, 441, 442, 443	\$60	\$800
1.30m Jumper	1.30m	445, 446, 447	\$65	\$750

**Jumper Sections - Low Jumper Nomination Fee \$50**

<b>DIVISION/CLASS</b>	<b>HEIGHT</b>	<b>CLASS NUMBER</b>	<b>CLASS FEE</b>
0.70m Jumper	0.70m	400, 401, 402, 403	\$55
0.70m Children's/Adult Jumper	0.70m	496, 497, 498, 499	\$55
0.80m Jumper	0.80m	501, 502, 503, 504	\$55
0.80m Children's/Adult Jumper	0.80m	410, 411, 412, 413	\$55
0.90m Jumper	0.90m	415, 416, 417, 418	\$55
0.90m Low Children's/Adult Jumper	0.90m	420, 421, 422, 423	\$55
1.00m Jumper	1.00m	425, 426, 427, 428	\$55
1.00m Low Children's/Adult Jumper	1.00m	459, 460, 461, 462	\$55
Take2 Thoroughbred Jumper	1.00m	506, 507, 508, 509	\$55
1.10m Jumper	1.10m	430, 431, 432, 433	\$55
High Children's Jumper	1.10m	481, 482, 483, 484	\$55
High Adult Jumper	1.10m	485, 486, 487, 488	\$55
1.15m Jumper	1.15m	435, 436, 437, 438	\$55
Modified Junior/Amateur Jumper	1.15m	469, 470, 471, 472	\$55
Pony Jumper	1.05m	455, 456, 457, 458	\$55

# SPECIAL CLASSES

## class index

### Special Classes

CLASS	HEIGHT	CLASS NUMBER	CLASS FEE	POST ENTRY FEE
<b>\$1,000 Child/Adult Jumper Classic</b> Horses must have entered and shown in at least one class in the Children's or Adult Jumper sections.	1.10m	606	\$100	\$25
<b>\$1,500 USHJA Jumper Classic Level 1</b> All horses are eligible.	1.15m	603	\$150	\$25
<b>\$9,500 USHJA Jumper Classic Level 3</b> All horses are eligible.	1.30m	600	\$350	\$50
<b>\$500 Low Child/Adult Jumper Classic</b> Horses must have shown in at least one class in the Child or Adult Jumper sections. Prize money to six places and ribbons to eight. No horse-rider combination cross entry between 1.15M Classic and Low Child/Adult Classic. This class will be held at two separate heights. Declare upon entry which height you will be competing at.	0.70m - 0.80m	607	\$75	\$25
<b>\$500 Medium Child/Adult Jumper Classic</b> Same specifications as class 607	0.90m or 1.0m	608	\$75	\$25
<b>\$2,500 USHJA Open National Hunter Derby Regional Championship</b>	See Specs	901	\$300 + \$25 USHJA fee (\$50 addback)	\$25
<b>\$2,500 USHJA Amateur National Hunter Derby Regional Championship</b>	See Specs	902	\$300 + \$25 USHJA fee (\$50 addback)	\$25
<b>\$2,500 USHJA Junior National Hunter Derby Regional Championship</b>	See Specs	903	\$300 + \$25 USHJA fee (\$50 addback)	\$25
<b>\$1,000 Hillcrest Training Local Hunter Derby</b>	2'6"	624	\$100	\$25
<b>\$5,000 Platinum Performance USHJA Green Hunter Incentive Regional Championship</b> Will run concurrently with last class of respective section.	3'/3'3"	625	\$500 + \$25 USHJA Fee	\$25
<b>\$5,000 Platinum Performance USHJA Green Hunter Incentive Regional Championship</b> Will run concurrently with last class of respective section.	3'6"/3'9"	627	\$500 + \$25 USHJA Fee	\$25
<b>Hillcrest Training Lead Line</b>	-	700	Free	Free

### Hunter Classics - If fewer than 10 entries, classics may be combined at managers discretion.

CLASS	HEIGHT	CLASS NUMBER	CLASS FEE	POST ENTRY FEE
<b>\$1,000 Junior &amp; Amateur Owner 3'6" Classic</b> Designated first-round class. Horse must have entered, shown, and completed the course in two Jr or AO Hunter classes over fences at the same show. Classic will be split if more than 10 entrants in each division.	3'6"	800	\$100	\$25
<b>\$1,000 Junior &amp; Amateur Owner 3'3" Classic</b> Designated first-round class. Horse must have entered, shown, and completed the course in two Jr or AO Hunter classes over fences at the same show. Classic will be split if more than 10 entrants in each division.	3'3"	801	\$100	\$25
<b>\$500 Pony Hunter Classic</b> Designated first-round class. Ponies must have entered, shown, and completed the course in two Pony Hunter classes over fences at the same show.	2'3", 2'6", 2'9"	804	\$55	\$25
<b>\$500 Adult Amateur Hunter Classic</b> Designated first-round class. Horse must have entered, shown, and completed the course in two Adult Hunter classes over fences at the same show.	3'	805	\$55	\$25
<b>\$500 Children's Hunter Classic</b> Designated first-round class. Horse/ponies must have entered, shown, and completed the course in two Children's Hunter classes over fences at the same show.	3'	806	\$55	\$25
<b>\$500 Low Adult Hunter Classic</b> Designated first-round class. Horse/ponies must have entered, shown, and completed the course in two Low Adult Hunter classes over fences at the same show.	2'6"	807	\$55	\$25
<b>\$500 Low Child Hunter Classic</b> Designated first-round class. Horse/ponies must have entered, shown, and completed the course in two Low Child Hunter classes over fences at the same show.	2'6"	808	\$55	\$25
<b>\$500 Long Stirrup Hunter Classic</b> Designated first-round class. Horse/ponies must have entered, shown, and completed the course in two Long Stirrup Hunter classes over fences at the same show.	2'3"	809	\$55	\$25
<b>\$500 Short Stirrup Classic</b> Designated first-round class. Horse/ponies must have entered, shown, and completed the course in two Short Stirrup Hunter classes over fences at the same show.	2'3"	810	\$55	\$25

# Standlee/USHJA National Hunter Derby Regional Championships



MCCOOL PHOTOGRAPHY

**Offered in Three Sections:**  
Open, Amateur and Junior

**Two Round Format:**  
Classic Round followed by  
a Handy Round

**Earn HOTY Bonus Points**

**No qualifying required!**

## **North Championship:**

Brandywine Valley Summer Series  
Devon, PA

**July 5- 10, 2022**

## **South Championship:**

Tyron Summer 5  
Mill Spring, NC

**July 12-17, 2022**

## **North Central Championship**

Split Rock Hunter Jumper Classic II  
Lexington, KY

**June 14-19, 2022**

## **South Central Championship:**

Southwest Showdown  
Katy, TX

**September 21-25, 2022**

## **Northwest Championship:**

Oregon Summer  
Wilsonville, OR

**August 24-28, 2022**

## **Southwest Championship:**

Blenheim June Classic II  
San Juan Capistrano, CA

**June 15-19, 2022**



*To learn more, visit [ushja.org/nhdrc](https://ushja.org/nhdrc)  
or email [hunterdept@ushja.org](mailto:hunterdept@ushja.org).*



# Do you have what it takes to be a World Championship Hunter Rider?



## WCHR

WORLD CHAMPIONSHIP HUNTER RIDER

PHOTOS: THE BOOK LLC, SHAWN MCMILLEN, JAMES STUART, JERRY MOHME, JAMES LESLIE PARKER, JAY GOSS

## Congratulations to the 2021 WCHR Northwest Regional Winners!

Professional - **Shelley Campf**  
Developing Professional - **Rachel Spears**  
Amateur Owner 3'6" - **Hilary Sosne**  
Amateur Owner 3'3" - **Briteney Mercer**  
Adult Amateur - **Jessica King**  
Junior 3'6" - **Ella Cate Duke**

Junior 3'3" - **Avery Winston**  
Children's - **Adelaide Ellis**  
Pony - **Olivia Aul**  
Handy Hunter - **Shelley Campf & Alexis Taylor**  
Professional Owner - **Aleron LLC**  
Developing Pro Owner - **Avery Winston**

### JOIN TODAY... and be part of the fun in 2022!

*Enroll in the WCHR Program by Midnight Eastern time of the last day of this competition and receive points toward Regional and National awards, and qualifying for the WCHR Finals Challenge classes held during the Capital Challenge Horse Show.*

For more information contact

Eva Jackson at [ejackson@ushja.org](mailto:ejackson@ushja.org) or (859) 225-6735, or visit [www.ushja.org/wchr](http://www.ushja.org/wchr).

## SCHEDULE OF EVENTS

**Tuesday, August 23, 2022 - Schooling Rounds****Derby Ring**

3'3"- 9:00-1:00

3'- 1:00-4:00

**Grand Prix Ring**

1.10m - 9:00-11:00

1.00m - 11:00-3:00

.85m- 3:00-4:30

**Hunter Ring 1**

3' - 9:00-12:00

2'6" - 12:00-3:00

2' - 3:00-5:00

**Hunter Ring 2**

2'- 9:00-12:00

2'6"- 12:00-5:00

35 Small Hunter Under Saddle

40 Large Hunter Under Saddle

232 TAKE2 Thoroughbred Hunter Under Saddle

**Wednesday, Kathryn A Hall PC Ring 2- 8:00 am**

233 USHJA 2' Hunter

234 USHJA 2' Hunter

243 USHJA 2'3" Hunter

244 USHJA 2'3" Hunter

11 USHJA 2'6" Hunter

12 USHJA 2'6" Hunter

1 Baby Green Hunter

2 Baby Green Hunter

13 USHJA 2'6" Hunter Under Saddle

3 Baby Green Hunter Under Saddle

**Wednesday, August 24, 2022****Wednesday, Aleron Derby Ring-7:45 am**

56 Conformation Model

46 Green Hunter 3'6"

47 Green Hunter 3'6" Handy

50 Green Hunter 3'6" Under Saddle

57 Conformation Hunter

58 Conformation Hunter Handy

61 Green Conformation Hunter Under Saddle

51 Green Hunter 3'9"

52 Green Hunter 3'9" Handy

53 Green Hunter 3'9" Under Saddle

62 High Performance Hunter

63 High Performance Hunter Handy

64 High Performance Hunter Under Saddle

67 Performance Hunter 3'6"

68 Performance Hunter 3'6" Handy

69 Performance Hunter 3'6" Under Saddle

41 Performance Hunter 3'3"

42 Performance Hunter 3'3" Handy

43 Performance Hunter 3'3" Under Saddle

**Wednesday, Grand Prix Ring-8:00 am**

400 0.70m Jumper Table II Sec. 2b

496 0.70m Child/Adult Jumper Table II Sec. 1

501 0.80m Jumper Table II Sec. 2b

410 0.80m Jumper Table II Sec. 1

415 0.90m Jumper Table II Sec. 2b

420 0.90m Child/Adult Jumper Table II Sec. 1

425 1.00m Jumper Table II Sec. 2b

459 1.00m Child/Adult Jumper Table II Sec. 1

506 1.00m Take 2 Thoroughbred Jumper Table II Sec. 2b

430 1.10m Jumper Table II Sec. 2b

481 1.10m High Children's Jumper Table II Sec. 2b

485 1.10m High Adult Jumper Table II Sec. 2b

435 1.15m Jumper Table II Sec. 2b

469 1.15m Modified Jr./Amateur Table II Sec. 2b

440 1.20m Jumper Table II Sec. 2b

445 1.30m Jumper Table II Sec. 2b

**Wednesday, Horse Play Hunter Ring 1- 8:00 am**

248 USHJA 2'9" Hunter

249 USHJA 2'9" Hunter

252 USHJA 2'9" Hunter Under Saddle

6 Young Hunter 2'9"

7 Young Hunter 2'9"

8 Young Hunter 2'9" Under Saddle

253 USHJA 3' Hunter

254 USHJA 3' Hunter

21 Green Hunter 3'

22 Green Hunter 3'

16 Young Hunter 3'

17 Young Hunter 3'

255 USHJA 3' Hunter Under Saddle

23 Green Hunter 3' Under Saddle

18 Young Hunter 3' Under Saddle

26 Green Hunter 3'3"

27 Green Hunter 3'3"

212 Young Hunter 3'3"

213 Young Hunter 3'3"

28 Green Hunter 3'3" Under Saddle

216 Young Hunter 3'3" Under Saddle

31 Small Hunter

32 Small Hunter

36 Large Hunter

37 Large Hunter

228 TAKE2 Thoroughbred Hunter

229 TAKE2 Thoroughbred Hunter

**Thursday, August 25, 2022****Thursday, Aleron Derby Ring-8:00 am**

44 Performance Hunter 3'3"

45 Performance Hunter 3'3"

70 Performance Hunter 3'6"

71 Performance Hunter 3'6"

65 High Performance Hunter

66 High Performance Hunter

54 Green Hunter 3'9"

55 Green Hunter 3'9" \*USHJA Green Incentive Overlay

48 Green Hunter 3'6"

49 Green Hunter 3'6" \*USHJA Green Incentive Overlay

59 Conformation Hunter

60 Conformation Hunter

\*USHJA Green Incentive Overlay

29 Green Hunter 3'3"

30 Green Hunter 3'3" \*USHJA Green Incentive Overlay

24 Green Hunter 3'

25 Green Hunter 3' \*USHJA Green Incentive Overlay

625 \$5,000 USHJA 3'/3'3" Green Hunter Incentive NW

Regional Championship OVERALL

627 \$5,000 USHJA 3'6"/3'9" Green Hunter Incentive NW

Regional Championship OVERALL

**Thursday, Horse Play Hunter Ring 1- 8:00 am**

250 USHJA 2'9" Hunter

251 USHJA 2'9" Hunter

9 Young Hunter 2'9"

10 Young Hunter 2'9"

256 USHJA 3' Hunter

257 USHJA 3' Hunter

19 Young Hunter 3'

## SCHEDULE OF EVENTS

20 Young Hunter 3'  
 214 Young Hunter 3'3"  
 215 Young Hunter 3'3"  
 33 Small Hunter  
 34 Small Hunter  
 38 Large Hunter  
 39 Large Hunter  
 230 TAKE2 Thoroughbred Hunter  
 231 TAKE2 Thoroughbred Hunter  
 359,360 OHJA Children's/Adult Medal Final  
*\*Last Chance Qualifier.*  
 361 OHJA Junior/Senior Medal Final 3'3"  
*\*Last Chance Qualifier.*  
 362 OHJA Junior/Senior Medal Final  
*\*Last Chance Qualifier.*

### Thursday, Kathryn A Hall PC Ring 2- 8:00 am

235 USHJA 2' Hunter Under Saddle  
 236 USHJA 2' Hunter  
 237 USHJA 2' Hunter  
 245 USHJA 2'3" Hunter Under Saddle  
 246 USHJA 2'3" Hunter  
 247 USHJA 2'3" Hunter  
 14 USHJA 2'6" Hunter  
 15 USHJA 2'6" Hunter  
 4 Baby Green Hunter  
 5 Baby Green Hunter  
 358 OHJA Mini Medal Final  
*\*Last Chance Qualifier.*  
 165 OHJA Foundation Medal Final  
*\*Last Chance Qualifier.*

### Thursday, Grand Prix Ring- 8:00 am

436 1.15m Jumper Table II Sec. 2b  
 470 1.15m Modified Jr./Amateur Table II Sec. 2b  
 441 1.20m Jumper Table II Sec. 2b  
 473 Low Jr./Amateur Jumper 1.20m Table II Sec. 2b  
 446 1.30m Jumper Table II Sec. 2b  
 431 1.10m Jumper Table II Sec. 2b  
 482 1.10m High Children's Jumper Table II Sec. 2b  
 486 1.10m High Adult Jumper Table II Sec. 2b  
 426 1.00m Jumper Table II Sec. 2b  
 460 1.00m Child/Adult Jumper Table II Sec. 1  
 507 1.00m Take 2 Thoroughbred Jumper Table II Sec. 2b  
 416 0.90m Jumper Table II Sec. 2b  
 421 0.90m Child/Adult Jumper Table II Sec. 1  
 502 0.80m Jumper Table II Sec. 2b  
 411 0.80m Jumper Table II Sec. 1  
 401 0.70m Jumper Table II Sec. 2b  
 497 0.70m Child/Adult Jumper Table II Sec. 1

### Friday, August 26, 2022

#### Friday, Aleron Derby Ring - 8:00 am

309 Equitation 15-17  
 310 Equitation 15-17  
 311 Equitation 15-17 Flat  
 300 Equitation 12-14  
 301 Equitation 12-14  
 302 Equitation 12-14 Flat  
 312 Equitation 11 & Under  
 313 Equitation 11 & Under  
 314 Equitation 11 & Under Flat  
 350 Dover Saddlery/USEF Hunter Seat Medal  
 353 WIHS Equitation Classic (Hunter Phase)  
 660 OHJA Jr./Sr. Medal Final Phase 2  
 662 OHJA Jr./Sr. 3'3" Medal Final Phase 2  
 — Break —

902 \$2,500 USHJA Amateur National Hunter Derby  
 Regional Championship  
 903 \$2,500 USHJA Junior National Hunter Derby  
 Regional Championship  
 624 Hillcrest Training Local Hunter Derby

### Friday, Horse Play Hunter Ring 1- 8:00 am

315 Pony Equitation Over Fences  
 316 Pony Equitation Over Fences  
 317 Pony Equitation Flat  
 379 Modified Child/Adult Equitation  
 380 Modified Child/Adult Equitation  
 381 Modified Child/Adult Equitation Flat  
 330, 327, 333 Adult Equitation  
 331, 328, 334 Adult Equitation  
 332 Adult Equitation 18-39 Flat  
 329 Adult Equitation 40-55 Flat  
 335 Adult Equitation 56 & Over Flat  
 303 Restricted Equitation 13 & under  
 304 Restricted Equitation 13 & under  
 305 Restricted Equitation 13 & under Flat  
 306 Restricted Equitation 14-17  
 307 Restricted Equitation 14-17  
 308 Restricted Equitation 14-17 Flat  
 -Break-  
 659 OHJA Adult Medal Final Phase 2  
 658 OHJA Children's Medal Final Phase 2

### Friday Kathryn A Hall PC Ring 2- 8:00 am

701 Walk Trot Hunter Opportunity  
 704 Walk Trot Equitation Opportunity  
 187 Short Stirrup Hunter Horse  
 188 Short Stirrup Hunter Horse  
 191 Short Stirrup Hunter Horse Undersaddle  
 182 Short Stirrup Hunter Pony  
 183 Short Stirrup Hunter Pony  
 186 Short Stirrup Hunter Pony Undersaddle  
 192 Long Stirrup Hunter  
 193 Long Stirrup Hunter  
 196 Long Stirrup Hunter Undersaddle  
 197 Low Adult Hunter  
 198 Low Adult Hunter  
 202 Low Child Hunter Horse  
 203 Low Child Hunter Horse  
 199 Low Adult Hunter Under Saddle  
 204 Low Child Hunter Horse Under Saddle  
 162 Children's Pony Equitation  
 163 Children's Pony Equitation  
 164 Children's Pony Equitation Flat  
 -Break-  
 657 OHJA Adult Mini Medal Final Phase 2  
 656 OHJA Children's Mini Medal Final Phase 2  
 661 OHJA Foundation Medal Final Phase 2

### Friday, Grand Prix Ring- 7:30 am

371 USHJA 3'3" Jumping Seat Medal  
 402 0.70m Jumper Table II Sec. 2b  
 498 0.70m Child/Adult Jumper Table II Sec. 1  
 503 0.80m Jumper Table II Sec. 2b  
 412 0.80m Jumper Table II Sec. 1  
 417 0.90m Jumper Table II Sec. 2b  
 422 0.90m Child/Adult Jumper Table II Sec. 1  
 427 1.00m Jumper Table II Sec. 2b  
 461 1.00m Child/Adult Jumper Table II Sec. 1  
 508 1.00m Take 2 Thoroughbred Jumper Table II Sec. 2b  
 432 1.10m Jumper Table II Sec. 2b



## SCHEDULE OF EVENTS

483 1.10m High Children's Jumper Table II Sec. 2b  
 487 1.10m High Adult Jumper Table II Sec. 2b  
 437 1.15m Jumper Table II Sec. 2b  
 471 1.15m Modified Jr./Amateur Table II Sec. 2b  
 442 1.20m Jumper Table II Sec. 2b  
 474 Low Jr./Amateur Jumper 1.20m Table II Sec. 2b  
 447 1.30m Jumper Table II Sec. 2b

**Saturday, August 27, 2022****Saturday, Aleron Derby Ring- 8:00 am**

901 \$2,500 USHJA Open National Hunter Derby  
 Regional Championship  
 152,238 Amateur Owner Hunter 3'3"  
 153,239 Amateur Owner Hunter 3'3"  
 207,519,514,524 Junior Hunter 3'3"  
 208,520,515,525 Junior Hunter 3'3"  
 375 USHJA Hunter Seat Medal  
 72,77 Amateur Owner Hunter  
 73,78 Amateur Owner Hunter  
 97,102,107,112 Junior Hunter  
 98,103,108,113 Junior Hunter  
 351 ASPCA Maclay Horsemanship Class  
 82,87,92 Adult Amateur Hunter  
 83,88,93 Adult Amateur Hunter  
 356 USEF Adult Medal  
 364 Ariat Adult Medal  
 -Break-  
 661 OHJA Foundation Medal Final Phase 3  
 657 OHJA Adult Mini Medal Final Phase 3  
 656 OHJA Children's Mini Medal Final Phase 3  
 662 OHJA Jr./Sr/ Medal Final 3'3" Phase 3  
 660 OHJA Jr./Senior Medal Final Phase 3

**Saturday, Horse Play Hunter Ring 1- 8:00 am**

127,132,137 Pony Working Hunter  
 128,133,138 Pony Working Hunter Conformation  
 142,167 Green Pony Working Hunter  
 143,168 Green Pony Working Hunter Conformation  
 357 Marshall & Sterling U.S. Pony Medal  
 131,136,141 Pony Hunter Under Saddle  
 146,171 Green Pony Hunter Under Saddle  
 172 Modified Child Hunter  
 173 Modified Child Hunter  
 177 Modified Adult Hunter  
 178 Modified Adult Hunter  
 176 Modified Child Hunter Under Saddle  
 181 Modified Adult Hunter Under Saddle  
 295 Schooling 3'  
 117 Children's Hunter 13 & under  
 118 Children's Hunter 13 & under  
 122 Children's Hunter 14-17  
 123 Children's Hunter 14-17  
 363 THIS Children's Medal

**Saturday, Kathryn Hall PC Hunter Ring 2- 8:00 am**

296 Schooling Pony Hunter  
 147 Children's Hunter Pony  
 148 Children's Hunter Pony  
 149 Children's Hunter Pony Under Saddle  
 194 Long Stirrup Hunter  
 195 Long Stirrup Hunter  
 809 Long Stirrup Hunter Classic  
 189 Short Stirrup Hunter Horse  
 190 Short Stirrup Hunter Horse  
 184 Short Stirrup Hunter Pony  
 185 Short Stirrup Hunter Pony  
 810 Short Stirrup Hunter Classic  
 200 Low Adult Hunter  
 201 Low Adult Hunter  
 807 Low Adult Hunter Classic  
 205 Low Child Hunter Horse  
 206 Low Child Hunter Horse  
 808 Low Child Hunter Classic

702 Walk Trot Hunter Opportunity  
 705 Walk Trot Equitation Opportunity

**Saturday, Grand Prix Ring- 7:30 am**

354 WIHS Equitation Classic Jumper Phase  
 352 Platinum Performance/USEF Talent Search 1\*  
 403 0.70m Jumper Table II Sec. 2b  
 499 0.70m Child/Adult Jumper Table II Sec. 1  
 504 0.80m Jumper Table II Sec. 2b  
 413 0.80m Jumper Table II Sec. 1  
 418 0.90m Jumper Table II Sec. 2b  
 423 0.90m Child/Adult Jumper Table II Sec. 1  
 428 1.00m Jumper Table II Sec. 2b  
 462 1.00m Child/Adult Jumper Table II Sec. 1  
 509 1.00m Take 2 Thoroughbred Jumper Table II Sec. 2b  
 433 1.10m Jumper Table II Sec. 2b  
 484 1.10m High Children's Jumper Table II Sec. 1  
 488 1.10m High Adult Jumper Table II Sec. 1  
 455 Pony Jumper 1.05m Table II Sec. 2d  
 456 Pony Jumper 1.05m Table II Sec. 1  
 438 1.15m Jumper Table II Sec. 2b  
 472 1.15m Modified Jr./Amateur Table II Sec. 2b  
 443 1.20m Jumper Table II Sec. 2b  
 475 Low Jr./Amateur Jumper 1.20m Table II Sec. 2b

**Sunday, August 28, 2022****Sunday, Aleron Derby Ring- 8:00 am**

154,240 Amateur Owner Hunter 3'3" Under Saddle  
 209,521,516,526 Junior Hunter 3'3" Under Saddle  
 155,241 Amateur Owner Hunter 3'3"  
 156,242 Amateur Owner Hunter 3'3" Handy  
 801 Junior & Amateur Owner Hunter 3'3" Classic  
 210,522,517,527 Junior Hunter 3'3"  
 211,523,518,528 Junior Hunter 3'3" Handy  
 373 NHS 3'3" Medal  
 372 USEF/NCEA Junior Hunter Seat Medal  
 378 WSHJA Good Seat & Hands Class 3'6"  
 76,81 Amateur Owner Hunter Under Saddle  
 74,79 Amateur Owner Hunter  
 75,80 Amateur Owner Hunter Handy  
 800 Junior & Amateur Owner Hunter 3'6" Classic  
 101,106,111,116 Junior Hunter Under Saddle  
 99,104,109,114 Junior Hunter  
 100,105,110,115 Junior Hunter Handy  
 800 Junior & Amateur Owner Hunter 3'6" Classic  
 86,91,96 Adult Amateur Hunter Under Saddle  
 84,89,94 Adult Amateur Hunter  
 85,90,95 Adult Amateur Hunter  
 805 Adult Amateur Hunter Classic  
 374 THIS NHS Adult Medal  
 377 WSHJA Good Seat & Hands Class 3'  
 121 Children's Hunter 13 & under Under Saddle  
 126 Children's Hunter 14-17 Under Saddle  
 119 Children's Hunter 13 & under  
 120 Children's Hunter 13 & under  
 124 Children's Hunter 14-17  
 125 Children's Hunter 14-17  
 806 Children's Hunter Classic

## SCHEDULE OF EVENTS

### Sunday, Horse Play Hunter Ring 1- 8:00 am

129,134,139 Pony Hunter  
130,135,140 Pony Hunter Handy  
804 Pony Hunter Classic  
144,169 Green Pony Hunter  
145,170 Green Pony Hunter  
150 Children's Hunter Pony  
151 Children's Hunter Pony  
174 Modified Child Hunter  
175 Modified Child Hunter  
179 Modified Adult Hunter  
180 Modified Adult Hunter

### Saturday, Kathryn Hall PC Hunter Ring 2- 8:00 am

324 Long Stirrup Equitation  
325 Long Stirrup Equitation  
321 Short Stirrup Equitation  
322 Short Stirrup Equitation  
326 Long Stirrup Equitation Flat  
323 Short Stirrup Equitation Flat  
336 Low Adult Equitation  
337 Low Adult Equitation  
318 Low Child Equitation  
319 Low Child Equitation  
338 Low Adult Equitation Flat  
320 Low Child Equitation Flat  
376 WSHJA Good Seat & Hands Class 2'6"  
703 Walk Trot Hunter Opportunity  
706 Walk Trot Equitation Opportunity

### Sunday, Grand Prix Ring- 8:00 am

457 Pony Jumper 1.05m Table II Sec. 2b  
458 Pony Jumper 1.05m Table II Sec. 1  
607 \$500 Low Child/Adult Jumper Classic .70m/.80m  
Table II, Sec. 2 (a/b)  
608 \$500 Medium Child/Adult Jumper Classic .90m/1.00m  
Table II, Sec. 2 (a/b)  
606 \$1,000 Child/Adult Jumper Classic  
1.10m Table II, Sec. 2 (a/b)  
603 \$1,500 USHJA Jumper Classic Level 1 1.15m  
Table II, Sec. 2 (a/b)  
700 Hillcrest Training Lead Line Class  
600 \$9,500 USHJA Jumper Classic Level 3  
1.30m Table II Sec. 2a

## OREGON SUMMER

## The DIBBINS FOX CUP

SPORTSMANSHIP AWARD

THIS AWARD IS GIVEN IN REMEMBRANCE OF  
CYNTHIA HOYT DIBBINS  
LIFETIME EQUESTRIAN, TEACHER AND STUDENT



The DIBBINS FOX CUP WILL BE AWARDED  
SUNDAY OF COUNTRY CLASSIC AND  
NORTHWEST SPECTACULAR.  
A TROPHY AND A ONE YEAR SUBSCRIPTION  
TO PRACTICAL HORSEMAN MAGAZINE WILL  
BE GIVEN TO ALL WINNERS.

# INDIVIDUAL MEMBERSHIP APPLICATION

UNITED STATES HUNTER JUMPER ASSOCIATION

## MEMBER INFORMATION

Name: \_\_\_\_\_

Address: \_\_\_\_\_  
\_\_\_\_\_

City: \_\_\_\_\_

State: \_\_\_\_\_ Zip: \_\_\_\_\_

Phone Day: (\_\_\_\_\_) \_\_\_\_\_

Phone Evening: (\_\_\_\_\_) \_\_\_\_\_

Fax: (\_\_\_\_\_) \_\_\_\_\_

E-mail: \_\_\_\_\_

Website: \_\_\_\_\_

USEF/USHJA # \_\_\_\_\_

Date of Birth: \_\_\_\_\_

Required for Juniors (Under 18 Years of Age) & Amateurs

## CHOOSE APPROPRIATE DESIGNATIONS

Category which best describes your participation (check all that apply):

- ☐ Owner ☐ Licensed Official ☐ Rider ☐ Manager  
☐ Trainer ☐ Breeder ☐ Secretary

Circle One: **HUNTER** **JUMPER**  
Circle One: **JUNIOR** **AMATEUR** **PROFESSIONAL**  
(Under 18 as of 12/1/1999)

Signature: \_\_\_\_\_

(Guardian Signature Required for Juniors Members)

Date: \_\_\_\_\_

## HAVE A NEW HORSE?

Don't forget to register them at [www.ushja.org/horseregistration](http://www.ushja.org/horseregistration)

## PAYMENT INFORMATION. DO NOT DETACH.

TOTAL AMOUNT ENCLOSED: \$ \_\_\_\_\_  
PLEASE DO NOT SEND CASH

Check # \_\_\_\_\_  
(Make Check Payable to: United States Hunter Jumper Association)

☐ Visa ☐ Master Card ☐ Discover Card ☐ AMEX Card Number: \_\_\_\_\_-\_\_\_\_\_-\_\_\_\_\_-\_\_\_\_\_

Exp. Date: \_\_\_\_ / \_\_\_\_ / \_\_\_\_ Billing Zip Code: \_\_\_\_\_ Card Holder's Name (Print): \_\_\_\_\_

Card Holder's Signature: \_\_\_\_\_

## MEMBERSHIP TYPES

### Active Member

In order to compete as a rider, trainer, owner, or his/her agent(s) at non-breed restricted USEF-licensed competitions in any Hunter, Hunter Breeding, Jumper or Hunter Seat Equitation classes, a person must be an active member of the USHJA or pay a show pass fee to the USHJA. Exceptions: Local competitions and the exceptions in and GR901.9.

**Life Member \$1,500** ☐

**3 Year Active Member \$240** ☐  
(Effective 36 months from the start date)

**Active Member \$85** ☐  
(Effective 12 months from the start date)

### Associate Member

Those individuals not competing in USEF licensed competitions who receive all other benefits of USHJA membership for the year. Please note: Associate members are subject to USHJA show pass fees if competing in USEF licensed competitions.

**Associate Member \$35** ☐  
(Effective 12 months from the start date)

### Outreach Member

Those individuals participating in the USHJA Outreach Competitions or USHJA Affiliate Awards program. Please note: Outreach members are subject to the USHJA show pass fee if competing in USEF licensed competitions.

**Outreach Member \$0** ☐  
(Effective 12 months from the start date)

### Collegiate Member

Collegiate Members are those alumni riders or coaches participating in IHSA/USHJA competitions. The membership year runs from September 1 to August 31. Please note: Collegiate members are subject to USHJA show pass fee if competing in USEF licensed competitions.

**Collegiate Alumni \$15** ☐  
(Effective through 8/31/2018)

**Collegiate Coach \$35** ☐  
(Effective through 8/31/2018)

## SUPPORT THE SPORT

My Donation will help advance the Hunter and Jumper disciplines.

Suggested Donations

☐ \$25.00 ☐ \$50.00 ☐ \$100.00 ☐ Other: \_\_\_\_\_

**TOTAL AMOUNT \$** \_\_\_\_\_

Your membership includes a one-year subscription to *USHJA In Stride* magazine (\$9.00).

**Mail Application and Payment to:**

UNITED STATES HUNTER JUMPER ASSOCIATION • 3870 CIGAR LANE • LEXINGTON, KY 40511 • PHONE: (859) 225-6700 • FAX: (859) 258-9033 • [USHJA.ORG](http://USHJA.ORG)

**For Questions Email: [membership@ushja.org](mailto:membership@ushja.org)**





# SAVE *the* DATE

The 2022 OHJA Medal Finals will be held during the  
Oregon Summer Classic August 24-28  
at Hunter Creek Farm

Don't forget to renew your membership for the  
2022 show season at [oregonhunterjumper.org](http://oregonhunterjumper.org)!



OREGON  
HUNTER JUMPER  
ASSOCIATION

National Rating

# WHY USEF?

**More Shows.  
More Choices.**



**Fair for All.**



**Safety and  
Welfare First.**



**For more go to  
[usef.org/ride-united](https://usef.org/ride-united)**



# TEAM NW

## EQUESTRIAN SPORTS

---

### NORTHWEST SPECTACULAR

*August 31 - September 4, 2022*

Entries Close August 10th

**Hunter Creek Equestrian Park - Wilsonville, OR**

*USEF Premier Rated ~ USEF Jumper Rated 3*

Hunter/Equitation Judge.....Mr. Mark Bone - *Moorpark, CA*  
Hunter/Equitation Judge.....Ms. Virginia Edwards - *Wellington, FL*  
Hunter/Equitation Judge.....Mr. Irving Evans - *Fremont, NH*  
Hunter/Equitation Judge.....Mr. John McQueen - *West Monroe, LA*

Jumper Judge.....Mr. Max Von Zimmermann - *Selah, WA*

Course Designer.....Meghan Rawlins - *Victoria, BC*

Course Designer.....Tommy Brawley - *Marshall, TX*

USEF Steward.....Miss. Janet Fall - *El Macero, CA*

Licensee.....Camp Horse Shows & Productions, Inc

Show Manager.....Mike Gallaway - *Eugene, OR*

*(541) 954-5312*

Community Relations & Sponsorship.....Chad Campf - *Aurora, OR*

*(503) 970-7375*

Show Secretary.....Mollie Gallaway - *Eugene, OR*

*(541) 914-0052*

Veterinarian.....Lisa Campbell, DVM - *Oregon City, OR*

*(971) 269-9207*

Farrier.....TBA

Photographer.....Grand Pix - *Thermal, CA*

*[www.grandpixphoto.com](http://www.grandpixphoto.com)*

Social Media and Website.....Kindy Poole - *Portland, OR*

Nearest Hospital.....Providence Newberg Medical Center 1001 Providence Dr. Newberg, OR 97132

**9.5 miles from the Hunter Creek**

Nearest Level I Trauma Center OHSU Hospital 3181 SW Sam Jackson Park Rd, Portland OR 97239

**20 miles from the Hunter Creek**

Nearest Veterinary Hospital.....OSU Veterinary Hospital 172 Magruder Hall, Corvallis, OR 97331

**71.5 miles from Hunter Creek**

---

WWW.TEAMNWEQUESTRIANSPO RTS.COM



**HUNTERS***class index***Rated Hunter Sections - Hunter/Equitation Nominating Fee \$50**

<b>DIVISION/CLASS</b>	<b>HEIGHT</b>	<b>CLASS NUMBER</b>	<b>DIVISION FEE</b>	<b>CLASS FEE</b>	<b>PRIZE \$</b>
Young Hunter 2'9" Open to horses 5 years old and younger	2'9"	6, 7, 8, 9, 10	\$200	-	-
Young Hunter 3' Open to horses 6 years old and younger	3'	16, 17, 18, 19, 20	\$200	-	-
Young Hunter 3'3" Open to horses 7 years old and younger	3'3"	212, 213, 214, 215, 216	\$200	-	-
Green Hunter 3'	3'	21, 22, 23, 24, 25	\$275	-	\$350
Green Hunter 3'3"	3'3"	26, 27, 28, 29, 30	\$275	-	\$350
Green Hunter 3'6"	3'6"	46, 47, 48, 49, 50	\$275	-	\$750
Green Hunter 3'9"	3'9"	51, 52, 53, 54, 55	\$275	-	\$750
Conformation Hunter Model	-	56	-	\$35	-
Conformation Hunter	3'6"/3'9"	57, 58, 59, 60, 61	\$275	-	\$750
Performance Hunter 3'3'	3'3"	41, 42, 43, 44, 45	\$275	\$55	\$750
Performance Hunter 3'6'	3'6"	67, 68, 69, 70, 71	\$275	\$55	\$750
High Performance Hunter	3'9"	62, 63, 64, 65, 66	\$300	\$70	\$1,000
Amateur Owner Hunter 18-35	3'6"	72, 73, 74, 75, 76	\$275	-	\$500
Amateur Owner Hunter 36 & Over	3'6"	77, 78, 79, 80, 81	\$275	-	\$500
Amateur Owner Hunter 3'3" 18-35	3'3"	152, 153, 154, 155, 156	\$275	-	\$500
Amateur Owner Hunter 3'3" 36 & Over	3'3"	238, 239, 240, 241, 242	\$275	-	\$500
Small Junior Hunter 15 & Under	3'6"	97, 98, 99, 100, 101	\$275	-	\$500
Small Junior Hunter 16-17	3'6"	102, 103, 104, 105, 106	\$275	-	\$500
Large Junior Hunter 15 & Under	3'6"	107, 108, 109, 110, 111	\$275	-	\$500
Large Junior Hunter 16-17	3'6"	112, 113, 114, 115, 116	\$275	-	\$500
Junior Hunter 3'3" Small 15 & Under	3'3"	207, 208, 209, 210, 211	\$275	-	\$500
Junior Hunter 3'3" Large 15 & Under	3'3"	514, 515, 516, 517, 518	\$275	-	\$500
Junior Hunter 3'3" Small 16-17	3'3"	519, 520, 521, 522, 523	\$275	-	\$500
Junior Hunter 3'3" Large 16-17	3'3"	524, 525, 526, 527, 528	\$275	-	\$500
Small Pony Hunter	2'3"	127, 128, 129, 130, 131	\$250	-	\$400
Medium Pony Hunter	2'6"	132, 133, 134, 135, 136	\$250	-	\$400
Large Pony Hunter	3'	137, 138, 139, 140, 141	\$250	-	\$400
Small/Medium Green Pony	2'3"-2'6"	142, 143, 144, 145, 146	\$250	-	\$250
Large Green Pony Hunter	2'9"	167, 168, 169, 170, 171	\$250	-	\$250

**C-Rated Hunter Sections - Hunter/Equitation Nominating Fee \$50**

<b>DIVISION/CLASS</b>	<b>HEIGHT</b>	<b>CLASS NUMBER</b>	<b>DIVISION FEE</b>	<b>CLASS FEE</b>	<b>PRIZE \$</b>
TAKE2 Thoroughbred Hunter Open to Jockey Club registered Thoroughbreds.	3'	228, 229, 230, 231, 232	\$220	\$55	-
Small Hunter Open to horses over 14.2 but not over 16.0 hands.	3'	31, 32, 33, 34, 35	\$220	\$55	-
Adult Hunter 18-39	3'	82, 83, 84, 85, 86	\$220	\$55	-
Adult Hunter 40-55	3'	87, 88, 89, 90, 91	\$220	\$55	-
Adult Hunter 56 & Over	3'	92, 93, 94, 95, 96	\$220	\$55	-
Children's Hunter 13 & Under	3'	117, 118, 119, 120, 121	\$220	\$55	-
Children's Hunter 14-17	3'	122, 123, 124, 125, 126	\$220	\$55	-
Children's Hunter Pony	2'/2'3"/2'6"	147, 148, 149, 150, 151	\$220	\$55	-
USHJA 2' Hunter	2'	233, 234, 235, 236, 237	\$220	\$55	-
USHJA 2'3" Hunter	2'3"	243, 244, 245, 246, 247	\$220	\$55	-
USHJA 2'6" Hunter	2'6"	11, 12, 13, 14, 15	\$220	\$55	-
USHJA 2'9" Hunter	2'9"	248, 249, 250, 251, 252	\$220	\$55	-
USHJA 3' Hunter	3'	253, 254, 255, 256, 257	\$220	\$55	-

**Non-Rated Hunter Sections - Hunter/Equitation Nominating Fee \$50**

<b>DIVISION/CLASS</b>	<b>HEIGHT</b>	<b>CLASS NUMBER</b>	<b>DIVISION FEE</b>	<b>CLASS FEE</b>
Schooling Hunter Open to all hunters and ponies. See schedule for fence heights.	-	276, 287, 289, 290, 291, 294	-	\$55
Baby Green Hunter Open to a horse of any age in its first year of showing.	2'6"	1, 2, 3, 4, 5	\$220	\$55
Large Hunter Open to horse 16.0 hands and over. Fences 3'.	3'	36, 37, 38, 39, 40	\$220	\$55
Short Stirrup Hunter Pony Open to any pony and junior rider. Rider may not cross enter into any hunter class with fences above 2'3". May be combined with short Stirrup Horse. Respective heights.	18"	182, 183, 184, 185, 186	\$220	\$55
Short Stirrup Hunter Horse Open to any horse and junior rider. Rider may not cross enter into any hunter class with fences at 2'9" or higher.	2'-2'3"	187, 188, 189, 190, 191	\$220	\$55
Long Stirrup Hunter Open to any horse and amateur rider. Rider may not cross enter into any hunter class with fences at 2'9" or higher.	2'-2'3"	192, 193, 194, 195, 196	\$220	\$55
Modified Child Hunter Open to any horse and junior rider. Rider may not cross enter into any class with fences exceeding 3'.	2'9"	172, 173, 174, 175, 176	\$220	\$55
Modified Adult Hunter Open to any horse and amateur rider. Rider may not cross enter into any class with fences exceeding 3'.	2'9"	177, 178, 179, 180, 181	\$220	\$55
Low Children's Hunter Open to junior riders. ZONE SPECIFICATIONS will be followed	2'6"	202, 203, 204, 205, 206	\$220	\$55
Low Adult Hunter Open to amateur riders. ZONE SPECIFICATIONS will be followed	2'6"	197, 198, 199, 200, 201	\$220	\$55

**Opportunity Sections**

<b>DIVISION/CLASS</b>	<b>HEIGHT</b>	<b>CLASS NUMBER</b>	<b>DIVISION FEE</b>	<b>CLASS FEE</b>
Walk Trot Hunter Opportunity	-	701,702,703	-	\$30
Walk Trot Equitation Opportunity	-	704,705,706	-	\$30

**EQUITATION***class index***Equitation Sections - Hunter/Equitation Nominating Fee \$50**

<b>DIVISION/CLASS</b>	<b>HEIGHT</b>	<b>CLASS NUMBER</b>	<b>DIVISION FEE</b>	<b>CLASS FEE</b>
Equitation 11 & Under No cross entry into Restricted Equitation	3'	312, 313, 314	\$150	\$55
Equitation 12-14 No cross entry into Restricted Equitation	3'	300, 301, 302	\$150	\$55
Equitation 15 - 17 No cross entry into Restricted Equitation	3'	309, 310, 311	\$150	\$55
Adult Equitation 18-39	3'	330, 331, 332	\$150	\$55
Adult Equitation 40-55	3'	327, 328, 329	\$150	\$55
Adult Equitation 56 & Over	3'	333, 334, 335	\$150	\$55
Pony Equitation	2'3", 2'6", 3'	315, 316, 317	\$150	\$55
Restricted Equitation 13 & Under Open to junior riders. Rider may not cross enter into any class with fences exceeding 3'3".	3'	303, 304, 305	\$150	\$55
Restricted Equitation 14 - 17 Open to junior riders. Rider may not cross enter into any class with fences exceeding 3'3".	3'	306, 307, 308	\$150	\$55
Modified Child/Adult Equitation Riders may not cross enter into any class exceeding 3'.	2'9"	379, 380, 381	\$150	\$55
Low Adult Equitation Open to amateur riders. Riders may not cross enter into any class exceeding 2'9".	2'6"	336, 337, 338	\$150	\$55
Low Child Equitation Open to junior riders. Riders may not cross enter into any class exceeding 2'9".	2'6"	318, 319, 320	\$150	\$55
Long Stirrup Equitation Open to any amateur rider. Riders may not cross enter into any class with fences exceeding 2'6".	2'3"	324, 325, 326	\$150	\$55
Short Stirrup Equitation Open to any junior rider. Riders may not cross enter into any class with fences exceeding 2'6".	2'3"	321, 322, 323	\$150	\$55
Children's Pony Equitation Open to any pony and junior rider. Rider may not cross enter any equitation class with fences at 3' or higher	2', 2'3", 2'6"	162, 163, 164	\$150	\$55

**Medal Section - Hunter/Equitation Nominating Fee \$50**

<b>CLASS</b>	<b>HEIGHT</b>	<b>CLASS NUMBER</b>	<b>CLASS FEE</b>
Hamel Foundation NHS 3'3" Medal	3'3"	373	\$55
Dover Saddlery/USEF Hunter Seat Medal	3'6"	350	\$55
ASPCA Horsemanship Class	3'6"	351	\$55
WIHS Equitation Classic Hunter Phase	3'6"	353	\$55
WIHS Equitation Classic Jumper Phase	3'6"	354	\$55
WIHS Equitation Classic Combined	-	355	-
OHJA Foundation Medal	2'6"	165	\$55
OHJA Mini Medal	2'6"	358	\$55
OHJA Children's Medal	3'	359	\$55
OHJA Adult Medal	3'	360	\$55
OHJA Junior/Senior Medal 3'3"	3'3"	361	\$55
OHJA Junior/Senior Medal	3'6"	362	\$55
THIS Children's Medal	3'	363	\$55
THIS NHS Adult Medal	3'	374	\$55
Ariat National Adult Medal	3'	364	\$55
USEF Adult Medal	3'3"	356	\$55
Marshall & Sterling U.S. Pony Medal	2'3/2'6"/3'	357	\$55
USHJA Hunter Seat Medal 3'3"	3'3"	375	\$55
Platinum Performance/USEF Talent Search 1*	3'9"	352	\$55
USEF/NCEA Junior Hunter Seat Medal	3'3"	372	\$55
WSHJA Good Seat & Hands Class 2'6"	2'6"	376	\$55
WSHJA Good Seat & Hands Class 3'	3'	377	\$55
WSHJA Good Seat & Hands Class 3'6"	3'6"	378	\$55

**Nominated Jumper Sections ~ High Jumper Nomination Fee \$150**

<b>DIVISION/CLASS</b>	<b>HEIGHT</b>	<b>CLASS NUMBER</b>	<b>DIV. FEE</b>	<b>CLASS FEE</b>	<b>PRIZE \$</b>
Low Junior/Amateur Jumper	1.20m	473, 474, 475	-	\$65	\$750
Medium Junior/Amateur Jumper	1.30m	477, 478, 479		\$65	\$750
1.20m Jumper	1.20m	440, 441, 442, 443	-	\$65	\$1000
1.30m Jumper	1.30m	445, 446, 447	-	\$65	\$750
1.35m Jumper	1.35m	495	-	\$65	\$250

**Jumper Sections ~ Low Jumper Nomination Fee \$50**

<b>DIVISION/CLASS</b>	<b>HEIGHT</b>	<b>CLASS NUMBER</b>	<b>DIVISION FEE</b>	<b>CLASS FEE</b>
0.70m Jumper	0.70m	400, 401, 402, 403	\$190	\$55
0.70m Children's/Adult Jumper	0.70m	496, 497, 498, 499	\$190	\$55
0.80m Jumper	0.80m	501, 502, 503, 504	\$190	\$55
0.80m Children's/Adult Jumper	0.80m	410, 411, 412, 413	\$190	\$55
0.90m Jumper	0.90m	415, 416, 417, 418	\$190	\$55
0.90m Low Children's/Adult Jumper	0.90m	420, 421, 422, 423	\$190	\$55
1.00m Jumper	1.00m	425, 426, 427, 428	\$190	\$55
1.00m Low Children's/Adult Jumper	1.00m	459, 460, 461, 462	\$190	\$55
Take2 Thoroughbred Jumper	1.00m	506, 507, 508, 509	\$190	\$55
1.10m Jumper	1.10m	430, 431, 432, 433	\$190	\$55
High Children's Jumper	1.10m	481, 482, 483, 484	\$190	\$55
High Adult Jumper	1.10m	485, 486, 487, 488	\$190	\$55
1.15m Jumper	1.15m	435, 436, 437, 438	\$190	\$55
Modified Junior/Amateur Jumper	1.15m	469, 470, 471, 472	\$190	\$55
Pony Jumper	1.05m	455, 456, 457, 458	\$190	\$55

**USHJA Zone IX HOTY Jumper Finals- If fewer than 10 entries, classics may be combined at managers discretion.**

<b>CLASS</b>	<b>HEIGHT</b>	<b>CLASS NUMBER</b>	<b>CLASS FEE</b>
\$2,000 Low Junior/Amateur Jumper Finals	1.20m	665	\$200
\$2,000 Medium Junior/Amateur Jumper Finals	1.30m	666	\$200
\$1,000 High Children's Jumper Finals	1.10m	667	\$125
\$1,000 High Adult Jumper Finals	1.10m	668	\$125
\$1,000 5 Year Old Young Jumper Finals	1.20m	671	\$125
\$1,000 6 Year Old Young Jumper Finals	1.30m	672	\$125
\$1,000 7 Year Old Young Jumper Finals	1.35m	673	\$125
\$1,000. Low Children's Jumper Final	.95m	669	\$125
\$1,000. Low Adult Jumper Final	.95m	670	\$125



# SPECIAL CLASSES

# class index

## Special Classes

CLASS	HEIGHT	CLASS NUMBER	CLASS FEE	POST ENTRY FEE
<b>\$500 Low Child/Adult Jumper Classic</b> Horses must have shown in at least one class in the Child or Adult Jumper sections. Prize money to six places and ribbons to eight. No horse-rider combination cross entry between 1.15M Classic and Low Child/Adult Classic. This class will be held at two separate heights. Declare upon entry which height you will be competing at.	0.70m - 0.80m	607	\$75	\$25
<b>\$5,000 USHJA Jumper Classic Level 1</b> All horses are eligible.	1.15m	603	\$250	\$25
<b>\$15,000 USHJA Jumper Classic Level 3</b> All horses are eligible.	1.35m	601	\$425	\$50
<b>\$2,500 USHJA National Hunter Derby</b>	See Specs	621	\$200	\$25
<b>\$20,000 USHJA International Hunter Derby Regional Championship</b>	See Specs	622	\$550	\$50
<b>\$1,000 Platinum Performance USHJA Green Hunter Incentive</b> Will run concurrently with last class of respective section.	3'/3'3"	625	\$100	\$25
<b>\$1,000 Platinum Performance USHJA Green Hunter Incentive</b> Will run concurrently with last class of respective section.	3'6"/3'9"	627	\$100	\$25
<b>OHJA Junior Equitation Challenge Benefit</b>	-	680	\$50	-
<b>OHJA Amateur Equitation Challenge Benefit</b>	-	681	\$50	-
<b>OHJA Professional Equitation Challenge Benefit</b>	-	682	\$50	-
<b>Hillcrest Training Lead Line</b>	-	700	Free	Free
<b>USHJA Zone IX Equitation Championship</b> Open to USHJA Member Riders that have earned a first or second place ribbon in the USEF Hunter Seat Medal within the qualifying period. Riders will compete over a 3'6" course. The top 15 will return for a second round. At least top four to ride off.	3'6"	675	\$100	\$25

## Hunter Classics - If fewer than 10 entries, classics may be combined at managers discretion.

CLASS	HEIGHT	CLASS NUMBER	CLASS FEE	POST ENTRY FEE
<b>\$1,000 Junior &amp; Amateur Owner 3'6" Classic</b> Designated first-round class. Horse must have entered, shown, and completed the course in two Jr or AO Hunter classes over fences at the same show. Classic will be split if more than 10 entrants in each division.	3'6"	800	\$100	\$25
<b>\$1,000 Junior &amp; Amateur Owner 3'3" Classic</b> Designated first-round class. Horse must have entered, shown, and completed the course in two Jr or AO Hunter classes over fences at the same show. Classic will be split if more than 10 entrants in each division.	3'3"	801	\$100	\$25
<b>\$500 Pony Hunter Classic</b> Designated first-round class. Ponies must have entered, shown, and completed the course in two Pony Hunter classes over fences at the same show.	2'3", 2'6", 2'9"	804	\$55	\$25
<b>\$500 Adult Amateur Hunter Classic</b> Designated first-round class. Horse must have entered, shown, and completed the course in two Adult Hunter classes over fences at the same show.	3'	805	\$55	\$25
<b>\$500 Children's Hunter Classic</b> Designated first-round class. Horse/ponies must have entered, shown, and completed the course in two Children's Hunter classes over fences at the same show.	3'	806	\$55	\$25
<b>\$500 Low Adult Hunter Classic</b> Designated first-round class. Horse/ponies must have entered, shown, and completed the course in two Low Adult Hunter classes over fences at the same show.	2'6"	807	\$55	\$25
<b>\$500 Low Child Hunter Classic</b> Designated first-round class. Horse/ponies must have entered, shown, and completed the course in two Low Child Hunter classes over fences at the same show.	2'6"	808	\$55	\$25
<b>\$500 Long Stirrup Hunter Classic</b> Designated first-round class. Horse/ponies must have entered, shown, and completed the course in two Long Stirrup Hunter classes over fences at the same show.	2'3"	809	\$55	\$25
<b>\$500 Short Stirrup Hunter Classic</b> Designated first-round class. Horse/ponies must have entered, shown, and completed the course in two Short Stirrup Hunter classes over fences at the same show.	2'3"	810	\$55	\$25

# TEAM NW

## EQUESTRIAN SPORTS

---

### CHAMPIONSHIPS OFFERED IN THE FOLLOWING DIVISIONS:

Young Hunter 2'9", Young Hunter 3', Young Hunter 3'3", Green Hunter 3', Green Hunter 3'3", Green Hunter 3'6", Green Hunter 3'9", Green Conformation Hunter, High Performance Conformation Hunter, Performance Hunter 3'3', Performance Hunter 3'6', High Performance Hunter, Amateur Owner Hunter 18-35, Amateur Owner Hunter 36 & Over, Amateur Owner Hunter 3'3" 18-35, Amateur Owner Hunter 3'3" 36 & Over, Small Junior Hunter 15 & Under, Small Junior Hunter 16-17, Large Junior Hunter 15 & Under, Large Junior Hunter 16-17, Junior Hunter 3'3" Small 15 & Under, Junior Hunter 3'3" Large 15 & Under, Junior Hunter 3'3" Small 16-17, Junior Hunter 3'3" Large 16-17, Small Pony Hunter, Medium Pony Hunter, Large Pony Hunter, Small/Medium Green Pony, Large Green Pony Hunter, TAKE2 Thoroughbred Hunter, Adult Hunter 18-39, Adult Hunter 40-55, Adult Hunter 56 & Over, Children's Hunter 13 & Under, Children's Hunter 14-17, Children's Hunter Pony, Baby Green Hunter, Small Hunter, Large Hunter, Modified Child/Adult Hunter, Low Child Hunter, Low Adult Hunter, Short Stirrup Hunter, Short Stirrup Hunter Pony, Long Stirrup Hunter, USHJA 2' Hunter, USHJA 2'3" Hunter, USHJA 2'6" Hunter, USHJA 2'9" Hunter, USHJA 3' Hunter

Equitation 11 & Under, Equitation 12-14, Equitation 15-17, Adult Equitation 18-39, Adult Equitation 40-55, Adult Equitation 56 & Over, Restricted Equitation 13 & Under, Restricted Equitation 14-17, Low Adult Equitation, Low Child Equitation, Long Stirrup Equitation, Short Stirrup Equitation, Children's Pony Equitation

0.70m Jumper, 0.70m Child/Adult Jumper, 0.80m Jumper, 0.80m Child/Adult Jumper, 0.90m Jumper, 0.90m Child/Adult Jumper, 1.00m Jumper, 1.00m Low Child/Adult Jumper, 1.10m Jumper, 1.15m Jumper, 1.20m Jumper, 1.30m Jumper, High Children's Jumper, High Adult Jumper, Modified Junior/Amateur Jumper, Low Junior/Amateur Jumper, Medium Junior/Amateur Jumper

---



*Best of luck*

to all the competitors at the  
Team NW Summer Series!

Use promo code  
TEAMNW  
to save 20% off your  
order of \$50 or more at  
horseplaybend.com\*

HORSEPLAY

HORSEPLAYBEND.COM

1531 NE 3RD STREET BEND, OR 97701 • 541-382-2341 • FOLLOW US! @horseplaybend

\*some premium brand restrictions may apply

## SCHEDULE OF EVENTS

**Tuesday, August 30, 2022 - Schooling Rounds****Derby Ring**

3'3"- 9:00-1:00

3'- 1:00-4:00

**Grand Prix Ring**

1.10m - 9:00-11:00

1.00m - 11:00-3:00

.85m- 3:00-4:30

**Hunter Ring 1**

3' - 9:00-12:00

2'6" - 12:00-3:00

2' - 3:00-5:00

**Hunter Ring 2**

2' - 9:00-12:00

2'6"- 12:00-5:00

**Wednesday, August 31, 2022****Wednesday, Aleron Derby Ring-7:30 am**

56 Green Conformation Model

217 High Performance Conformation Model

46 Green Hunter 3'6"

47 Green Hunter 3'6" Handy

50 Green Hunter 3'6" Under Saddle

57 Green Conformation Hunter

58 Green Conformation Hunter Handy

61 Green Conformation Hunter Under Saddle

51 Green Hunter 3'9"

52 Green Hunter 3'9" Handy

53 Green Hunter 3'9" Under Saddle

218 High Performance Conformation Hunter

219 High Performance Conformation Hunter Handy

62 High Performance Hunter

63 High Performance Hunter Handy

220 High Performance Conformation Hunter Under Saddle

64 High Performance Hunter Under Saddle

67 Performance Hunter 3'6"

68 Performance Hunter 3'6" Handy

69 Performance Hunter 3'6" Under Saddle

41 Performance Hunter 3'3"

42 Performance Hunter 3'3" Handy

43 Performance Hunter 3'3" Under Saddle

**Wednesday, Horse Play Hunter Ring 1- 8:00 am**

248 USHJA 2'9" Hunter

249 USHJA 2'9" Hunter

252 USHJA 2'9" Hunter Under Saddle

6 Young Hunter 2'9"

7 Young Hunter 2'9"

8 Young Hunter 2'9" Under Saddle

253 USHJA 3' Hunter

254 USHJA 3' Hunter

21 Green Hunter 3'

22 Green Hunter 3'

16 Young Hunter 3'

17 Young Hunter 3'

255 USHJA 3' Hunter Under Saddle

23 Green Hunter 3' Under Saddle

18 Young Hunter 3' Under Saddle

26 Green Hunter 3'3"

27 Green Hunter 3'3"

212 Young Hunter 3'3"

213 Young Hunter 3'3"

28 Green Hunter 3'3" Under Saddle

216 Young Hunter 3'3" Under Saddle

31 Small Hunter

32 Small Hunter

36 Large Hunter

37 Large Hunter

228 TAKE2 Thoroughbred Hunter

229 TAKE2 Thoroughbred Hunter

35 Small Hunter Under Saddle

40 Large Hunter Under Saddle

232 TAKE2 Thoroughbred Hunter Under Saddle

**Wednesday, Kathryn A Hall PC Ring 2- 8:00 am**

233 USHJA 2' Hunter

234 USHJA 2' Hunter

235 USHJA 2' Hunter Under Saddle

243 USHJA 2'3" Hunter

244 USHJA 2'3" Hunter

245. USHJA 2'3" Hunter Under Saddle

11 USHJA 2'6" Hunter

12 USHJA 2'6" Hunter

1 Baby Green Hunter

2 Baby Green Hunter

13 USHJA 2'6" Hunter Under Saddle

3 Baby Green Hunter Under Saddle

**Wednesday, Grand Prix Ring-8:00 am**

400 0.70m Jumper Table II Sec. 2b

496 0.70m Child/Adult Jumper Table II Sec. 1

501 0.80m Jumper Table II Sec. 2b

410 0.80m Jumper Table II Sec. 1

415 0.90m Jumper Table II Sec. 2b

420 0.90m Child/Adult Jumper Table II Sec. 1

425 1.00m Jumper Table II Sec. 2b

459 1.00m Child/Adult Jumper Table II Sec. 1

506 1.00m Take 2 Thouroughbred Jumper Table II Sec. 2b

430 1.10m Jumper Table II Sec. 2b

481 1.10m High Children's Jumper Table II Sec. 2b

485 1.10m High Adult Jumper Table II Sec. 2b

435 1.15m Jumper Table II Sec. 2b

469 1.15m Modified Jr./Amateur Table II Sec. 2b

440 1.20m Jumper Table II Sec. 2b

445 1.30m Jumper Table II Sec. 2b

477 Medium Jr./Amateur Jumper 1.30m Table II Sec. 2b

**Thursday, September 1, 2022****Thursday, Aleron Derby Ring-8:00 am**

48 Green Hunter 3'6"

49 Green Hunter 3'6" \*USHJA Green Incentive Overlay (627)

59 Green Conformation Hunter

60 Green Conformation Hunter

\*USHJA Green Incentive Overlay

54 Green Hunter 3'9"

55 Green Hunter 3'9" \*USHJA Green Incentive Overlay (627)

221 High Performance Conformation Hunter

222 High Performance Conformation Hunter

65 High Performance Hunter

66 High Performance Hunter

44 Performance Hunter 3'3"

45 Performance Hunter 3'3"

70 Performance Hunter 3'6"

71 Performance Hunter 3'6"

276 Schooling 3'/3'3"

24 Green Hunter 3'

25 Green Hunter 3' \*USHJA Green Incentive Overlay (625)

29 Green Hunter 3'3"

30 Green Hunter 3'3" \*USHJA Green Incentive Overlay (625)



## SCHEDULE OF EVENTS

### Thursday, Horse Play Hunter Ring 1- 8:00 am

250 USHJA 2'9" Hunter  
251 USHJA 2'9" Hunter  
9 Young Hunter 2'9"  
10 Young Hunter 2'9"  
256 USHJA 3' Hunter  
257 USHJA 3' Hunter  
19 Young Hunter 3'  
20 Young Hunter 3'  
214 Young Hunter 3'3"  
215 Young Hunter 3'3"  
33 Small Hunter  
34 Small Hunter  
38 Large Hunter  
39 Large Hunter  
230 TAKE2 Thoroughbred Hunter  
231 TAKE2 Thoroughbred Hunter

### Thursday, Kathryn A Hall PC Ring 2- 8:00 am

236 USHJA 2' Hunter  
237 USHJA 2' Hunter  
246 USHJA 2'3" Hunter  
247 USHJA 2'3" Hunter  
14 USHJA 2'6" Hunter  
15 USHJA 2'6" Hunter  
4 Baby Green Hunter  
5 Baby Green Hunter

### Thursday, Grand Prix Ring- 8:00 am

436 1.15m Jumper Table II Sec. 2b  
470 1.15m Modified Jr./Amateur Table II Sec. 2b  
441 1.20m Jumper Table II Sec. 2b  
473 Low Jr./Amateur Jumper 1.20m Table II Sec. 2b  
446 1.30m Jumper Table II Sec. 2b  
478 Medium Jr./Amateur Jumper 1.30m Table II Sec. 2b  
495 1.35m Jumper Table II Sec. 2b  
431 1.10m Jumper Table II Sec. 2b  
482 1.10m High Children's Jumper Table II Sec. 2b  
486 1.10m High Adult Jumper Table II Sec. 2b  
426 1.00m Jumper Table II Sec. 2b  
460 1.00m Child/Adult Jumper Table II Sec. 1  
507 1.00m Take 2 Thoroughbred Jumper Table II Sec. 2b  
416 0.90m Jumper Table II Sec. 2b  
421 0.90m Child/Adult Jumper Table II Sec. 1  
502 0.80m Jumper Table II Sec. 2b  
411 0.80m Jumper Table II Sec. 1  
401 0.70m Jumper Table II Sec. 2b  
497 0.70m Child/Adult Jumper Table II Sec. 1

### Friday, September 2, 2022

#### Friday, Aleron Derby Ring - 8:00 am

309 Equitation 15-17  
310 Equitation 15-17  
311 Equitation 15-17 Flat  
300 Equitation 12-14  
301 Equitation 12-14  
302 Equitation 12-14 Flat  
312 Equitation 11 & Under  
313 Equitation 11 & Under  
314 Equitation 11 & Under Flat  
361 OHJA Jr./Sr. 3'3" Medal  
362 OHJA Jr./Sr. Medal  
350 Dover Saddlery/USEF Hunter Seat Medal  
353 WIHS Equitation Classic (Hunter Phase)  
— Break —  
675 Zone IX Equitation Championship

680 OHJA Junior Equitation Challenge Benefit  
681 OHJA Amateur Equitation Challenge Benefit  
682 OHJA Professional Equitation Challenge Benefit  
683 OHJA Overall Equitation Challenge Benefit

### Friday, Horse Play Hunter Ring 1- 8:00 am

330,327,333 Adult Equitation  
331,328,334 Adult Equitation  
332, 329, 335 Adult Equitation Flat  
360 OHJA Adult Medal  
303 Restricted Equitation 13 & under  
304 Restricted Equitation 13 & under  
305 Restricted Equitation 13 & under Flat  
306 Restricted Equitation 14-17  
307 Restricted Equitation 14-17  
308 Restricted Equitation 14-17 Flat  
359 OHJA Children's Medal  
379 Modified Child/Adult Equitation  
380 Modified Child/Adult Equitation  
381 Modified Child/Adult Equitation Flat  
315 Pony Equitation Over Fences  
316 Pony Equitation Over Fences  
317 Pony Equitation Flat

### Friday Kathryn A Hall PC Ring 2- 8:00 am

187 Short Stirrup Hunter Horse  
\*188 Short Stirrup Hunter Horse  
182 Short Stirrup Hunter Pony  
\*183 Short Stirrup Hunter Pony  
192 Long Stirrup Hunter  
\*193 Long Stirrup Hunter  
197 Low Adult Hunter  
\*198 Low Adult Hunter  
202 Low Child Hunter Horse  
\*203 Low Child Hunter Horse  
199 Low Adult Hunter Under Saddle  
204 Low Child Hunter Horse Under Saddle  
358 OHJA Mini Medal  
162,163 Children's Pony Equitation  
164 Children's Pony Equitation Flat  
165 OHJA Foundation Medal  
701 Walk Trot Hunter Opportunity  
704 Walk Trot Equitation Opportunity  
\* Denotes overlay for first round of classic

### Friday, Grand Prix Ring- 7:30 am

402 0.70m Jumper Table II Sec. 2b  
498 0.70m Child/Adult Jumper Table II Sec. 1  
503 0.80m Jumper Table II Sec. 2b  
412 0.80m Jumper Table II Sec. 1  
417 0.90m Jumper Table II Sec. 2b  
422 0.90m Child/Adult Jumper Table II Sec. 1  
427 1.00m Jumper Table II Sec. 2b  
461 1.00m Child/Adult Jumper Table II Sec. 1  
508 1.00m Take 2 Thoroughbred Jumper Table II Sec. 2b  
432 1.10m Jumper Table II Sec. 2b  
483 1.10m High Children's Jumper Table II Sec. 2b  
487 1.10m High Adult Jumper Table II Sec. 2b  
437 1.15m Jumper Table II Sec. 2b  
471 1.15m Modified Jr./Amateur Table II Sec. 2b  
442 1.20m Jumper Table II Sec. 2b  
474 Low Jr./Amateur Jumper 1.20m Table II Sec. 2b  
447 1.30m Jumper Table II Sec. 2b  
479 Medium Jr./Amateur Jumper 1.30m Table II Sec. 2b

## SCHEDULE OF EVENTS

**Saturday, September 3, 2022****Saturday, Aleron Derby Ring - 8:00 am**

152,238 Amateur Owner Hunter 3'3"  
 \* 153,239 Amateur Owner Hunter 3'3"  
 154,240 Amateur Owner Hunter 3'3" Under Saddle  
 207,519,514,524 Junior Hunter 3'3"  
 \* 208,520,515,525 Junior Hunter 3'3"  
 209,521,516,526 Junior Hunter 3'3" Under Saddle  
 375 USHJA Hunter Seat Medal 3'3"  
 72,77 Amateur Owner Hunter  
 \* 73,78 Amateur Owner Hunter  
 76,81 Amateur Owner Working Hunter Under Saddle  
 97,102,107,112 Junior Hunter  
 \* 98,103,108,113 Junior Hunter  
 101,106,111,116 Junior Hunter Under Saddle  
 351 ASPCA Maclay Horsemanship Class  
 -Break-  
 621 \$2,500 USHJA National Hunter Derby  
 \* Denotes overlay for first round of classic

**Saturday, Horse Play Hunter Ring 1- 8:00 am**

127,132,137 Pony Working Hunter  
 \* 128,133,138 Pony Working Hunter Conformation  
 142,167 Small/Medium Green Pony Working Hunter  
 143,168 Small/Medium Green Pony Working Hunter Conformation  
 357 Marshall & Sterling US Pony Medal  
 131,136,141 Pony Hunter Under Saddle  
 146,171 Green Pony Hunter Under Saddle  
 82,87,92 Adult Amateur Hunter  
 \*83,88,93 Adult Amateur Hunter  
 86,91,96 Adult Amateur Hunter Under Saddle  
 364 Ariat Adult Medal  
 356 USEF Adult Medal  
 117 Children's Hunter 13 & under  
 \*118 Children's Hunter 13 & under  
 122 Children's Hunter 14-17  
 \*123 Children's Hunter 14-17  
 363 THIS Children's Medal  
 177 Modified Adult Hunter  
 \*178 Modified Adult Hunter  
 172 Modified Children's Hunter  
 \*173 Modified Children's Hunter  
 179 Modified Adult Hunter Under Saddle  
 174 Modified Children's Hunter Under Saddle  
 \* Denotes overlay for first round of classic

**Saturday, Kathryn A Hall PC Ring 2- 8:00 am**

147 Children's Hunter Pony  
 148 Children's Hunter Pony  
 149 Children's Hunter Pony Under Saddle  
 189 Short Stirrup Hunter Horse  
 190 Short Stirrup Hunter Horse  
 194 Long Stirrup Hunter  
 195 Long Stirrup Hunter  
 809 Long Stirrup Hunter Classic  
 191 Short Stirrup Hunter Horse Under Saddle  
 196 Long Stirrup Hunter- Under Saddle  
 184 Short Stirrup Hunter Pony Under Saddle  
 185 Short Stirrup Hunter Pony  
 186 Short Stirrup Hunter Pony  
 810 Short Stirrup Hunter Classic  
 200 Low Adult Hunter  
 201 Low Adult Hunter  
 807 Low Adult Hunter Classic  
 205 Low Child Hunter Horse  
 206 Low Child Hunter Horse

808 Low Child Hunter Classic

702 Walk Trot Hunter Opportunity

705 Walk Trot Equitation Opportunity

**Saturday, Grand Prix Ring- 7:30 am**

352 Platinum Performance/USEF Talent Search 1\*  
 354 WIHS Equitation Classic (Jumper Phase)  
 403 0.70m Jumper Table II Sec. 2b  
 499 0.70m Child/Adult Jumper Table II Sec. 1  
 504 0.80m Jumper Table II Sec. 2b  
 413 0.80m Jumper Table II Sec. 1  
 418 0.90m Jumper Table II Sec. 2b  
 423 0.90m Child/Adult Jumper Table II Sec. 1  
 428 1.00m Jumper Table II Sec. 2b  
 462 1.00m Child/Adult Jumper Table II Sec. 1  
 509 1.00m Take 2 Thoroughbred Jumper Table II Sec. 2b  
 455 Pony Jumper 1.05m Table II Sec. 2c  
 456 Pony Jumper 1.05m Table II Sec. 1  
 433 1.10m Jumper Table II Sec. 2c  
 484 1.10m High Children's Jumper Table II Sec. 2c  
 488 1.10m High Adult Jumper Table II Sec. 2c  
 438 1.15m Jumper Table II Sec. 2c  
 472 1.15m Modified Jr./Amateur Table II Sec. 2c  
 443 1.20 m Jumper Table II Sec. 2c  
 475 Low Jr./Amateur Jumper 1.20m Table II Sec. 2c  
 —Break—  
 671 \$1,000 5 Year Old USHJA Zone IX Jumper Finals  
 Table II Sec. 2a or b  
 672 \$1,000 6 Year Old USHJA Zone IX Jumper Finals  
 Table II Sec. 2a or b  
 673 \$1,000 7 Year Old USHJA Zone IX Jumper Finals  
 Table II Sec. 2a or b  
 665 \$2,000 Low Junior Amateur USHJA Zone IX Jumper  
 Finals Table II Sec. 2a or b  
 700 Hillcrest Training Lead Line Class  
 601 \$15,000 1.35m Jumper Classic Level 3 Table II Sec. 2(a)

**Sunday, September 4, 2022****Sunday, Aleron Derby Ring - 8:00 am**

622 \$20,000 USHJA International Hunter Derby  
 Regional Championship  
 74,79 Amateur Owner Working Hunter  
 75,80 Amateur Owner Working Hunter  
 800 Junior & Amateur Owner 3'6" Classic  
 99,104,109,114 Junior Hunter  
 100,105,110,115 Junior Hunter  
 378 WSHJA Good Seat & Hands Class 3'6"

155,241 Amateur Owner Hunter 3'3"

156,242 Amateur Owner Hunter 3'3"

801 Junior & Amateur Owner Hunter 3'3" Classic

210,522,517,527 Junior Hunter 3'3"

211,523,518,528 Junior Hunter 3'3"

**Sunday, Horse Play Hunter Ring 1- 8:00 am**

129,134,139 Pony Hunter  
 130,135,240 Pony Hunter Handy  
 804 Pony Hunter Classic  
 144,169 Green Pony Hunter  
 145,170 Green Pony Hunter  
 84,89,94 Adult Amateur Hunter  
 85,90,95 Adult Amateur Hunter  
 805 Adult Amateur Hunter Classic  
 374 THIS NHS Adult Medal  
 377 WSHJA Good Seat & Hands Class 3'  
 121 Children's Hunter 13 & under Under Saddle

## SCHEDULE OF EVENTS

## NORTHWEST SPECTACULAR

126 Children's Hunter 14-17 Under Saddle  
 119 Children's Hunter 13 & under  
 120 Children's Hunter 13 & under  
 124 Children's Hunter 14-17  
 125 Children's Hunter 14-17  
 806 Children's Hunter Classic  
 373 NHS 3'3" Medal  
 372 USEF/NCEA Junior Hunter Seat Medal  
 180 Modified Adult Hunter  
 181 Modified Adult Hunter  
 175 Modified Children's Hunter  
 176 Modified Children's Hunter

### **Sunday, Kathryn A Hall PC Hunter Ring 2- 8:00 am**

150 Children's Hunter Pony  
 151 Children's Hunter Pony  
 324 Long Stirrup Equitation  
 325 Long Stirrup Equitation  
 326 Long Stirrup Equitation Flat  
 321 Short Stirrup Equitation  
 322 Short Stirrup Equitation  
 323 Short Stirrup Equitation Flat  
 336 Low Adult Equitation  
 337 Low Adult Equitation  
 338 Low Adult Equitation Flat  
 320 Low Child Equitation Flat  
 318 Low Child Equitation  
 319 Low Child Equitation  
 376 WSHJA Good Seat & Hands Class 2'6"  
 703 Walk Trot Hunter Opportunity  
 706 Walk Trot Equitation Opportunity

### **Sunday, Grand Prix Ring- 8:00 am**

457 Pony Jumper 1.05m Table II Sec. 2b  
 458 Pony Jumper 1.05m Table II Sec. 1  
 607 \$500 Child/Adult Jumper Classic .80m - .85m  
 Table II, Sec. 2 (a/b)  
 669 \$1,000 Low Children's USHJA Zone IX Jumper Finals  
 .90m/1.00m, Table II, Sec. 2 (a/b)  
 670 \$1,000 Low Adult USHJA Zone IX Jumper Finals  
 .90m/1.00m, Table II, Sec. 2 (a/b)  
 667 \$1,000 High Children's USHJA Zone IX Jumper Finals  
 1.10m Table II Sec. 2a or b  
 668 \$1,000 High Adult USHJA Zone IX Jumper Finals  
 1.10m Table II Sec. 2a or b  
 666 \$2,000 Medium Junior/Amateur USHJA Zone IX  
 Jumper Finals Table II Sec. 2a or b  
 603 \$1,500 USHJA Jumper Classic Level 1 1.15m  
 Table II Sec. 2a

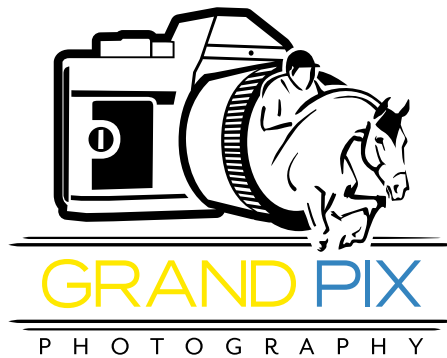
\* All Special Jumper Classics and Finals are subject to combining if less than 10 horses are entered in each class.

\*\* .80m, .90m, 1.0m, and 1.10m open classes are subject to cancellation if the schedule is too full.





GrandPix was established by Javi Varela in 2016 with the goal of being the West Coast premier equestrian show Photography company. Our original style and talented staff has set us apart from



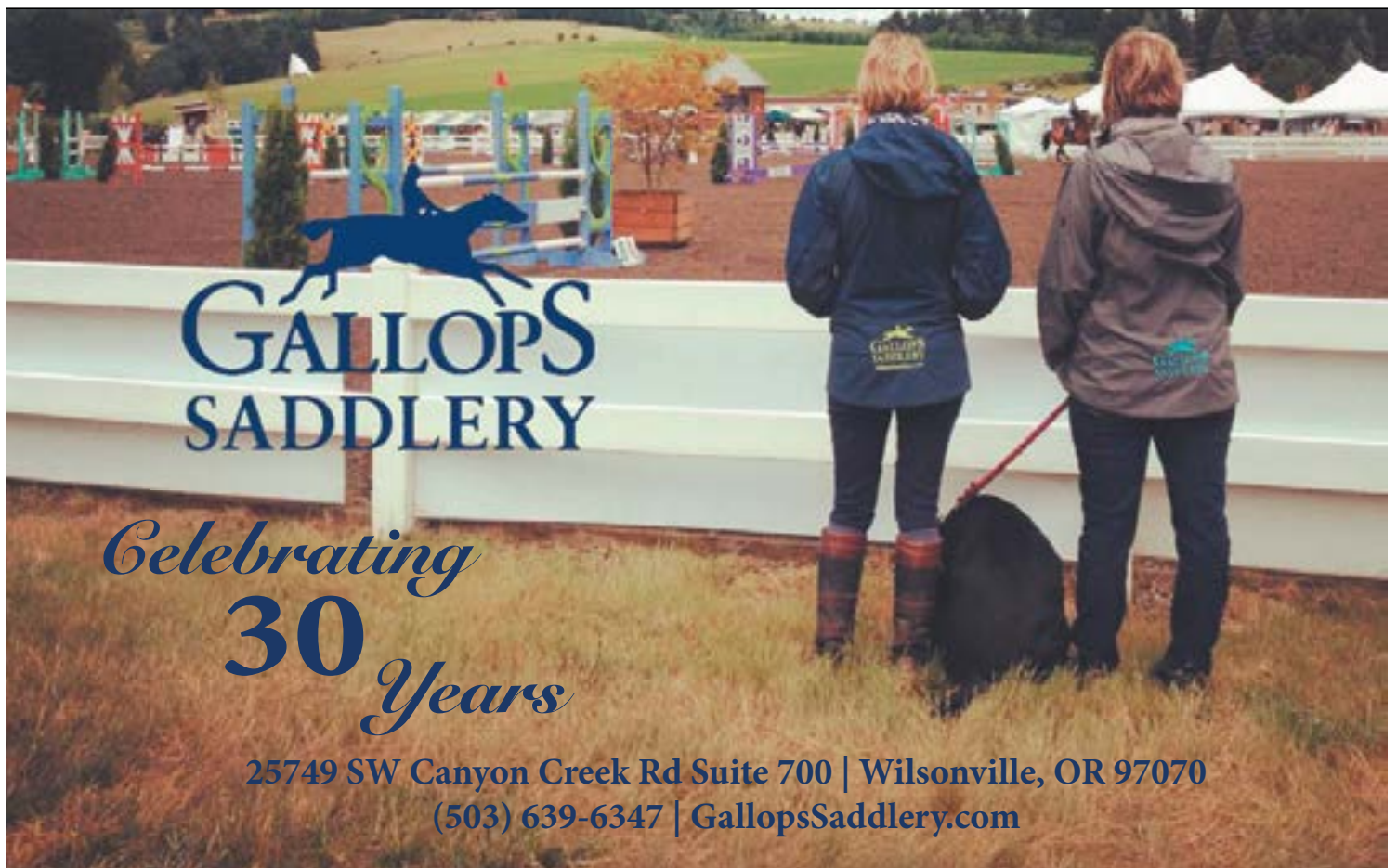
other photographers. We pride ourselves in offering our clients unique memories of their best moments in the show ring, while simultaneously providing unparalleled customer service





# GALLOP ON IN TO OUR NEW LOCATION

25749 SW Canyon Creek Rd Suite 700, Wilsonville, OR 97070









**Shevlin Sand & Gravel, LLC** provides quality sand and gravel products for commercial clients and consumers.

Locally owned, we supply the Central Oregon region with **dirt, sand, gravel, crushed rock, ready-mix concrete** as well as concrete equipment rental.

***Call 541-312-4730 for a quote.***

*Sponsor of the 2019 Wilsonville Summer Series.*

***[shevlinsandandgravel.com](http://shevlinsandandgravel.com)***





## PONY RIDERS, EARN MONEY WITH YOUR HORSEMANSHIP SKILLS!

### THE EMERSON BURR HORSEMANSHIP GRANT

The Emerson Burr Horsemanship Grant will be awarded to the highest scoring participant of each of these four age groups: 8 and under; 9-11; 12-14; and 15-17. Each winner at the zone level receives a \$100 grant to use towards educational related expenses.

Riders competing in pony classes are eligible to participate in this program. Each participant will take a short, multiple choice test on horsemanship, which contains no more than 20 questions and respond to a short essay question. A winner will be selected from each age group based on the results. Grant information forms received by winners must be returned to USEF by November 15.

The Emerson Burr Grant will also be offered on a National Level during USEF Pony Finals presented by Collecting Gaits Farm. So start sharpening your horsemanship knowledge! Check with the horse show office to see how you can participate!

Take part during our Oregon Summer show in August!



### Directions to Hunter Creek Equestrian Park

14441 SW Wilsonville Rd, Wilsonville, OR 97070



From Interstate 5, take Wilsonville exit 283. Turn West (left if headed north, right if headed south). Continue 3.5 miles. Hunter Creek Farm will be on your right.



**TAKE2**  
**SECOND CAREER**  
**THOROUGHBRED PROGRAM**



NUMBER

ONE HORSE PER FORM

# Team NW Entry Blank 2022

Entries Close August 10

## OWNER

Name \_\_\_\_\_  
Address \_\_\_\_\_  
City, state, zip \_\_\_\_\_  
Email \_\_\_\_\_  
Phone \_\_\_\_\_ USEF/USHJA# \_\_\_\_\_

## PRIZE MONEY PAYEE

Name \_\_\_\_\_  
Address \_\_\_\_\_  
City, state, zip \_\_\_\_\_  
Tax ID # \_\_\_\_\_

## ENTRIES CLOSE August 10, 2022

Please direct all questions to:  
Mollie Gallaway, show secretary (541) 914-0052

Arrival \_\_\_\_\_ Emergency phone # \_\_\_\_\_

## HORSE NAME

Color \_\_\_\_\_ Sex \_\_\_\_\_ Ht. \_\_\_\_\_ Age \_\_\_\_\_ Green \_\_\_\_\_ Horse/Pony \_\_\_\_\_  
Sm \_\_\_\_\_ Med \_\_\_\_\_ Lg \_\_\_\_\_

## RIDER ONE

Name \_\_\_\_\_  
Address \_\_\_\_\_  
City, state, zip \_\_\_\_\_  
Email \_\_\_\_\_  
Phone \_\_\_\_\_ USEF/USHJA# \_\_\_\_\_  
ASPCA# \_\_\_\_\_ OHJA# \_\_\_\_\_  
Birthdate \_\_\_\_\_

## RIDER TWO

Name \_\_\_\_\_  
Address \_\_\_\_\_  
City, state, zip \_\_\_\_\_  
Email \_\_\_\_\_  
Phone \_\_\_\_\_ USEF/USHJA# \_\_\_\_\_  
ASPCA# \_\_\_\_\_ OHJA# \_\_\_\_\_  
Birthdate \_\_\_\_\_

## TRAINER

Name \_\_\_\_\_  
Address \_\_\_\_\_  
City, state, zip \_\_\_\_\_  
Email \_\_\_\_\_  
Phone \_\_\_\_\_ USEF/USHJA# \_\_\_\_\_

## CREDIT CARD INFORMATION

Name \_\_\_\_\_  
Address \_\_\_\_\_  
City, state, zip \_\_\_\_\_  
Email \_\_\_\_\_  
VISA/MC # \_\_\_\_\_  
Expiration \_\_\_\_\_ 3 Digit Code \_\_\_\_\_  
Signature \_\_\_\_\_

\*3% convenience fee charged for all credit cards.

## Rider 1 Classes


## Rider 2 Classes


Stable/Horse Deposit.....\$ \_\_\_\_\_  
Stables/tack rooms @ \$275.....\$ \_\_\_\_\_  
\$50 Non-refundable disposal fee.....\$ \_\_\_\_\_  
High Jumper Nominating Fee @ \$150\$ \_\_\_\_\_  
Low Jumper Nominating Fee @ \$50.. \$ \_\_\_\_\_  
Hunter/EQ Nominating Fee @ \$50 .... \$ \_\_\_\_\_  
Schooling/grounds \$50.....\$ \_\_\_\_\_  
USEF Fee \$23 (\$15 D&M, \$8 USEF).....\$ \_\_\_\_\_  
USHJA Zone Fee \$7.....\$ \_\_\_\_\_  
USEF Show Pass @\$45 person.....\$ \_\_\_\_\_  
USHJA Show Pass @\$30 person.....\$ \_\_\_\_\_  
Haul in @ \$50 per day.....\$ \_\_\_\_\_  
Non showing horse @ \$50.....\$ \_\_\_\_\_  
RV hookups @ \$300 .....\$ \_\_\_\_\_  
TOTAL ENCLOSED.....\$ \_\_\_\_\_

Oregon Summer - August 24 - 28, 2022  
Northwest Spectacular - August 31 - September 4, 2022  
All entries are to be submitted online at [www.showgroundslive.com](http://www.showgroundslive.com)  
\$325 deposit required per entry - a 3% convenience fee will be charged



# WAIVER AND RELEASE OF LIABILITY, ASSUMPTION OF RISK AND INDEMNITY AGREEMENT

For and in consideration of United States Equestrian Federation, Inc. dba US Equestrian ("USEF") allowing me, the undersigned, to participate in any capacity (including as a rider, driver, handler, vaulter, longeur, lessee, owner, agent, coach, official, trainer or volunteer) in a USEF sanctioned, licensed or approved event or activity, including but not limited to equestrian clinics, practices, shows, competitions and related or incidental activities and ("USEF Event" or "USEF Events"); I, for myself, and on behalf of my spouse, children, heirs and next of kin, and any legal and personal representatives, executors, administrators, successors,, and assigns, hereby agree to and make the following contractual representations pursuant to this Agreement (the "**Agreement**"):

A. RULES AND REGULATIONS: I hereby agree that I have read, understand, and agree to be bound by all applicable Federation Bylaws, rules, and policies including the USEF Safe Sport Policy and Minor Athlete Abuse Prevention Policies (MAAPP) as published at [www.usef.org](http://www.usef.org), as amended from time to time.

B. ACKNOWLEDGMENT OF RISK: I knowingly, willingly, and voluntarily acknowledge the inherent risks associated with the sport of equestrian and know that horseback riding and related equestrian activities are inherently dangerous, and that participation in any USEF Event involves risks and dangers including, without limitation, the potential for serious bodily injury (including broken bones, head or neck injuries), sickness and disease (including communicable diseases), trauma, pain & suffering, permanent disability, paralysis and death; loss of or damage to personal property (including my mount & equipment) arising out of the unpredictable behavior of horses; exposure to extreme conditions and circumstances; accidents involving other participants, event staff, volunteers or spectators; contact or collision with other participants and horses, natural or manmade objects; adverse weather conditions; facilities issues and premises conditions; failure of protective equipment (including helmets); inadequate safety measures; participants of varying skill levels; situations beyond the immediate control of the USEF Event organizers and competition management; and other undefined, not readily foreseeable and presently unknown risks and dangers ("**Risks**").

### EQUINE ACTIVITY LIABILITY ACT WARNING:

CAUTION: HORSEBACK RIDING AND EQUINE ACTIVITIES CAN BE DANGEROUS. RIDE AT YOUR OWN RISK.

**Under the laws of most States, an equine activity sponsor or equine professional is not liable for any injury to, or the death of, a participant in equine activities resulting from the inherent risks of equine activities.**

C. ASSUMPTION OF RISK: I understand that the aforementioned Risks may be caused in whole or in part or result directly or indirectly from the negligence of my own actions or inactions, the actions or inactions of others participating in the USEF Events, or the negligent acts or omissions of the Released Parties defined below, and I hereby voluntarily and knowingly assume all such Risks and responsibility for any damages, liabilities, losses, or expenses that I incur as a result of my participation in any USEF Events. I also agree to be responsible for any injury or damage caused by me, my horse, my employees or contractors under my direction and control at any USEF Event.

D. WAIVER AND RELEASE OF LIABILITY, HOLD HARMLESS AND INDEMNITY: In conjunction with my participation in any USEF Event, I hereby release, waive and covenant not to sue, and further agree to indemnify, defend and hold harmless the following parties: USEF, USEF Recognized Affiliate Associations, the United States Olympic & Paralympic Committee (USOPC), USEF clubs, members, Event participants (including athletes/riders, coaches, trainers, judges/officials, and other personnel), the Event owner, licensee, and competition managers; the promoters, sponsors, or advertisers of any USEF Event; any charity or other beneficiary which may benefit from the USEF Event; the owners, managers, or lessors of any facilities or premises where a USEF Event may be held; and all directors, officers, employees, agents, contractors, and volunteers of any of the aforementioned parties (**Individually and Collectively, the "Released Parties" or "Event Organizers"**), with respect to any liability, claim(s), demand(s), cause(s) of action, damage(s), loss, or expense (including court costs and reasonable attorney fees) of any kind or nature ("**Liability**") which may arise out of, result from, or relate in any way to my participation in the USEF Events, including claims for Liability caused in whole or in part by the negligent acts or omissions of the Released Parties.

E. COMPLETE AGREEMENT AND SEVERABILITY CLAUSE: This Agreement represents the complete understanding between the parties regarding these issues and no oral representations, statements or inducements have been made apart from this Agreement. If any provision of this Agreement is held to be unlawful, void, or for any reason unenforceable, then that provision shall be deemed severable from this Agreement and shall not affect the validity and enforceability of any remaining provisions.

**I HAVE CAREFULLY READ THIS DOCUMENT IN ITS ENTIRETY, UNDERSTAND ALL OF ITS TERMS AND CONDITIONS, AND KNOW IT CONTAINS AN ASSUMPTION OF RISK, RELEASE AND WAIVER FROM LIABILITY, AS WELL AS A HOLD HARMLESS AND INDEMNIFICATION OBLIGATIONS.**

By signing below, I (as the participant or as the Parent/Legal Guardian of the minor identified below) hereby accept and agree to the terms and conditions of this Agreement in connection with my (or the minor's) participation in any USEF Event. If, despite this Agreement, I, or anyone on my behalf or the minor's behalf, makes a claim for Liability against any of the Released Parties, I will indemnify, defend and hold harmless each of the Released Parties from any such Liabilities as the result of such claim.

**The parties agree that this agreement may be electronically signed. The parties agree that the electronic signatures appearing on this agreement are the same as handwritten signatures for the purposes of validity, enforceability, and admissibility.**

☐ RIDER/DRIVER/HANDLER/VAULTER/LONGEUR ☐ OWNER ☐ TRAINER ☐ OFFICIAL ☐ STAFF ☐ VOLUNTEER ☐ COACH (IF APPLICABLE)

Signature: \_\_\_\_\_ Date: \_\_\_\_\_

Print Name: \_\_\_\_\_

Parent/Guardian Signature: (Required if Rider/Driver/Handler/Vaulter/Longeur is a minor) \_\_\_\_\_ Date: \_\_\_\_\_

Print Parent//Guardian Name: \_\_\_\_\_ Emergency Contact Phone No. \_\_\_\_\_

6.17.20



## FEDERATION ENTRY AGREEMENT

By entering a Federation-licensed Competition and signing this entry blank as the Owner, Lessee, Trainer, Manager, Agent, Coach, Driver, Rider, Handler, Vaulteur or Longeur and on behalf of myself and my principals, representatives, employees and agents, I agree that I am subject to the Bylaws and Rules of The United States Equestrian Federation, Inc. (the "Federation") and the local rules of \_\_\_\_\_ (Competition). I agree to be bound by the Bylaws and Rules of the Federation and of the competition. I will accept as final the decision of the Hearing Committee on any question arising under the Rules, and agree to release and hold harmless the competition, the Federation, their officials, directors and employees for any action taken under the Rules. I represent that I am eligible to enter and/or participate under the Rules, and every horse I am entering is eligible as entered. I also agree that as a condition of and in consideration of acceptance of entry, the Federation and/or the Competition may use or assign photographs, videos, audios, cable - casts, broadcasts, internet, film, new media or other likenesses of me and my horse taken during the course of the competition for the promotion, coverage or benefit of the competition, sport, or the Federation. Those likenesses shall not be used to advertise a product and they may not be used in such a way as to jeopardize amateur status. I hereby expressly and irrevocably waive and release any rights in connection with such use, including any claim to compensation, invasion of privacy, right of publicity, or to misappropriation. The construction and application of Federation rules are governed by the laws of the State of New York, and any action instituted against the Federation must be filed in New York State. See GR908.4.

**BY SIGNING BELOW, I AGREE** that I have read, understand, and agree to be bound by all applicable Federation Bylaws, rules, and policies including the USEF Safe Sport Policy and Minor Athlete Abuse Prevention Policies (MAAPP) as published at [www.usef.org](http://www.usef.org), as amended from time to time, as well as all terms and provisions of this Prize List. If I am signing and submitting this Agreement electronically, I acknowledge that my electronic signature shall have the same validity, force and effect as if I affixed my signature by my own hand.

**RIDER/DRIVER/HANDLER/VAULTER/LONGEUR** (mandatory)

Signature: \_\_\_\_\_

Print Name: \_\_\_\_\_

**TRAINER** (mandatory)

Signature: \_\_\_\_\_

Print Name: \_\_\_\_\_

**OWNER/AGENT** (mandatory)

Signature: \_\_\_\_\_

Print Name: \_\_\_\_\_

**COACH** (if applicable)

Signature: \_\_\_\_\_

Print Name: \_\_\_\_\_

Parent/Guardian Signature: (Required if Rider/Driver/Handler/Vaulteur/Longeur is a minor) \_\_\_\_\_

Print Parent//Guardian Name: \_\_\_\_\_ Emergency Contact Phone No. \_\_\_\_\_

Is Rider/Driver/Vaulteur a U.S. Citizen: ☐ Yes ☐ No

# RULES & REGULATIONS

**COVID-19 Protocol-** Anyone with a fever, cough, shortness of breath or sore throat is not allowed on the site. Maintain social distancing of 6 feet or one horse length at all times. No more than one person at a time will be allowed within 6 feet of ingate/staff. We encourage everyone to wear mask or face covering. We encourage everyone to enter online or mail entry forms to cut down on correspondence with staff. Only one representative per barn will be allowed in the office. It is the responsibility of any person entering the site to follow the USEF Best Practices and the Oregon State Covid-19 Guidelines.

## USEF ENTRY AGREEMENT

By entering a Federation-licensed Competition and signing this entry blank as the Owner, Lessee, Trainer, Manager, Agent, Coach, Driver, Rider, Handler, Vaulteur or Longeur and on behalf of myself and my principals, representatives, employees and agents, I agree that I am subject to the Bylaws and Rules of The United States Equestrian Federation, Inc. (the "Federation") and the local rules of (Competition). I agree to be bound by the Bylaws and Rules of the Federation and of the competition. I will accept as final the decision of the Hearing Committee on any question arising under the Rules, and agree to release and hold harmless the competition, the Federation, their officials, directors and employees for any action taken under the Rules. I represent that I am eligible to enter and/or participate under the Rules, and every horse I am entering is eligible as entered. I also agree that as a condition of and in consideration of acceptance of entry, the Federation and/or the Competition may use or assign photographs, videos, audios, cable - casts, broadcasts, internet, film, new media or other likenesses of me and my horse taken during the course of the competition for the promotion, coverage or benefit of the competition, sport, or the Federation. Those likenesses shall not be used to advertise a product and they may not be used in such a way as to jeopardize amateur status. I hereby expressly and irrevocably waive and release any rights in connection with such use, including any claim to compensation, invasion of privacy, right of publicity, or to misappropriation. The construction and application of Federation rules are governed by the laws of the State of New York, and any action instituted against the Federation must be filed in New York State. See GR908.4.

## USEF MEMBERSHIP STATEMENT

Life, senior active and junior active members shall be eligible to participate in all classes at Regular Competitions, Eventing Competitions at the Modified Level or above and Combined Driving Competitions at the Advanced Level, Dressage, Reining and Vaulting Competitions and Endurance Rides. A nonmember may participate as a handler, rider, driver, owner, lessee, agent, coach or trainer at Regular Competitions, Eventing Competitions, Dressage Competitions, Reining Competitions and Combined Driving Competitions upon payment of a \$45 Show Pass fee. Participants in the following classes are exempted from the Requirements of this rule: 1) leadline; 2) exhibitions; 3) games and races; 4) classes for 4-H members; 5) walk trot (exception: Friesian performance FR222) and academy classes (academy classes are classes limited to horses used regularly in a lesson program); 6) USDF introductory level tests, pas de deux and quadrille classes; 7) NRHA Endorsed Reining Competitions. 8) Opportunity classes, 9) citizens of other nations who have proof, in English, of current membership in good standing of their own National Federation, 10) USEA beginner novice division; and 11) assistant handlers in Dressage Sport Horse Breeding classes.

**EVERY CLASS OFFERED HEREIN WHICH IS COVERED BY THE RULES AND SPECIFICATIONS OF THE CURRENT FEDERATION RULE BOOK WILL BE CONDUCTED AND JUDGED IN ACCORDANCE THEREWITH.**

Every horse entered herein for competition will be under the control of the Horse Show Management, but the Show Management will in no case be responsible for any loss or damage that may occur, and it shall be a condition of entry that each exhibitor shall hold the horse show and the officials, employees, directors, officers, sponsoring entities of the horse show and the facilities at which the horse show is held blameless for any loss or accident to his horse(s), employee(s), or equipment which may occur from sickness, fire or other cause.

The horse show policies herein stated regarding scratches and refunds will be followed regardless of weather and in place of GR 912 and GR 832.

**ASSUMPTION OF RISK:** By signing the entry blank, the Owner, Lessee, Trainer, Manager, Agent, Coach, Driver, Rider, Handler, Vaulteur, or Longeur acknowledges that horseback riding, particularly jumping, is a dangerous activity and involves inherent risks that may cause serious injury and in some cases death because of the unpredictable nature and irrational behavior of horses, regardless of their training and past performance and expressly assumes all such inherent risks whether identified herein, in the entry blank or in the Federation Rules and Regulations. A horse, without warning or any apparent cause, can buck, stumble, fall, rear, bite, kick, run, make unpredictable movements, spook, jump obstacles, step on a person's foot, or push a person-- all of which may cause injury to an observer or rider or to another horse-- a loose horse can run at full gallop in a panic and run into objects or persons or other horses. The Show Ground Facilities are bordered by highways/ roads and thus noise from traffic and other sources occurs that can and will cause a horse to unexpectedly spook or react quickly. The Show Ground Facilities contain roads and driveways that are traversed by cars, golf carts, tractors, trailers, and heavy equipment, all of which may spook a horse. The above warnings and risks are meant as an example of some of the risks that are inherent and may be encountered but it is agreed this is not an exhaustive list and there are numerous additional conditions and/or events that may result in injuries while participating in the Competition and/or being present on the Show Ground Facilities. **Reminder: all USEF Life and Senior Active members, as well as participants who have regular contact with minor athletes, are required to comply with the, U.S. Center for SafeSport training requirement to be eligible to participate in the competition. All participants must adhere to the U.S. Center for SafeSport Code, USEF Safe Sport Policy, and the Minor Athlete Abuse Prevention Policies. More information about these can be found at [www.usef.org](http://www.usef.org).**

## ENTRY PROCEDURE

CLOSING DATE OF ENTRIES: ENTRY FORMS MUST BE RECEIVED, VIA SHOWGROUNDSLIVE.COM, BY THE DATE LISTED ON THE ENTRY BLANK FOR EACH RESPECTIVE SHOW.

### Entry Blank Requirements:

1. All horses on the grounds must be registered on an entry blank including horses not entered in classes. One entry blank per horse.
2. Entry forms must be completed with owner, riders, trainers and payee information including association membership numbers on [showgroundslive.com](http://showgroundslive.com).
3. Date of Birth of all minor exhibitors.
4. Signatures of owner, riders, trainer and parent or guardian of minor exhibitors. Parents or guardians of minor exhibitors shall hold the Horse Show, Team NW Equestrian Sports, LLC, and staff harmless for injury to such minor(s).
5. USEF name of horse, correct description of horse and USHJA ID number.
6. Classes may only be entered or declared by using a class number. Classes must be entered on [showgroundslive.com](http://showgroundslive.com).



# RULES & REGULATIONS

7. For all horses, the Horse Deposit fee and Stall fee must be paid by a credit card (Visa or Mastercard only) on [showgroundslive.com](http://showgroundslive.com). Each transaction will be charged a 3% convenience fee. Rider/Trainer/Owner agrees that Horse Show Management is authorized to charge the credit card pursuant to the information contained in the entry blank at the conclusion of the Competition.
8. If entry blanks are received prior to the closing date of entries AND are properly filled out, the Horse Deposit fee will be credited to the entries due. LATE AND/OR IMPROPER ENTRIES WILL FORFEIT THE HORSE DEPOSIT FEE.
9. DO NOT make entries from the time schedule. Consult the Class Index. Time schedules are subject to change after the close of entries.
10. Non Showing horses must be declared on the entry blank and pay the Non Showing horse fee. Leaving the class area "blank" constitutes an entry and will be charged a scratch fee, if the horse does not show.
11. Post Entries will be accepted after the closing date of entries and during the show at regular fees plus Post Entry Fee (See Fee Schedule).
12. Coach. For purposes of these rules, a coach is defined as any adult or adults who receives remuneration for having or sharing the responsibility for instructing, teaching, schooling, or advising a rider, driver, handler or vaulter in equestrian skills.
13. All fees must be paid in U.S. funds via Visa or Mastercard for the Horse Deposit and Stall on [showgroundslive.com](http://showgroundslive.com). The balance on accounts may be paid by credit card or check at the completion of the show. All credit card charges will be charged a 3% convenience fee.

## Office Check-in, Adds/Scratches, Eligibility and Check-out

1. The Show Office will be open schooling day from 8:30 a.m. to 5:00 p.m. and on show days from half an hour prior to start of classes until close of show.
2. A blank check or credit card is required at the time of check in before numbers will be issued.
3. Checks returned by the bank for any reason will incur a Returned Check Fee (See Fee Schedule), and will be re-deposited. In case the check is returned a second time, to retain entries all fees plus penalties must be paid by money order, cashier's check or cash prior to 4 p.m. the day before the show. In the event a check is returned by the bank after the completion of the show, it will be handled in accordance with USEF GR913.
4. Exhibitors are encouraged to close out their own accounts. Management will close Exhibitor Accounts that have not been settled at the conclusion of each show. Billing questions or refunds will not be considered.
5. Any exhibitor who does not compete in a class in which he/she is officially entered, and has not scratched the class in the Horse Show Office, will be billed for the class.
6. Horses showing in a class that they are not entered in will be billed double the entry fee for the class.
7. Exhibitors are responsible for their own errors and omissions and for knowing the cross entry restrictions for the divisions they are entered in. In the event of a violation of a cross entry restriction, the exhibitor will forfeit the entry fee, class placing and prize money award.
8. To be eligible for a stake class, the horse must have been entered, shown and judged in at least one over fences class in that section.
9. Measurement cards. Those competing in junior hunters, hunter ponies, jumper ponies and small hunters must possess a measurement card. If not, horse or pony must be measured by show steward before competing.
10. All class entries must be declared by 4:30 PM or ½ hour after the last class, whichever occurs first.
11. Late declarations will pay post entry penalties and may be required to work first in the order. Horses scratched the day of the class will remain responsible for the class fees in Special Classes. Classes entered on the entry blank constitute a declaration.
12. Equine Vaccinations. All horses whether competing or not are required to present the USEF Vaccination Record: Equine Influenza and Equine Herpes form found at [www.usef.org/forms-pubs](http://www.usef.org/forms-pubs)

## Refunds & Scratches:

1. Before the closing date of entries full refunds will be given.
2. After the closing date of entries, the Horse Deposit, nominating fees and stall fee are not refundable.
3. After the show starts, with the official show vet's certificate only, entry refunds will be given less a Scratch Fee (see Fee Schedule) and fees for classes already held prior to notification at the horse show office, whether exhibited in or not. If the vet scratch involves a division fee for sections required by USEF to be held as a division, no refund will be issued for such division.
4. With a vet certificate, a new horse may be substituted for a scratched horse and be charged a Substitution Fee (see Fee Schedule) for the substitution.
5. Full credit will be given for classes scratched in the Horse Show Office PRIOR TO THE START of the class, EXCEPT for Special Classes.
6. In the event that a horse is vetted out, there will be no refund of stall or tack room fees.

## Fee Schedule:

1. For every horse participating in any competition licensed by the Federation, a Federation fee will be collected (a portion of the fee shall be an Equine Drugs and Medication fee to provide for research, inspection, and enforcement of rules regarding use of medications and drugs; see GR407.1, .2 and .3). Exception: Horses entered in classes exempted from the Equine Drugs and Medication fee are also exempt from the balance of the Federation fee. A \$7 USHJA fee will be charged for each horse in performance and/or equitation classes at National and Premiere shows, and a \$2 USHJA fee per horse at Regional I and II shows. To be remitted to USHJA.
2. Post Entry Fee. Regular fees will be charged for all post entries plus a \$50/ horse Post Entry Fee.
3. Returned Check Fee. A check returned for any reason will incur a \$50 Returned Check Fee.
4. Scratch Fee. Horses scratched from the show will be charged a \$50 Scratch Fee.
5. Substitution Fee. Horses substituting for a scratched horse will be charged a \$25 substitution fee.
6. Haul-In Showing Fee: Horses not purchasing stalls will be charged a haul-in fee of \$50/day/horse.
7. Haul-In Schooling Fee: Horses hauling in to school will be charged \$150/horse.
8. Clean-Up Fee: Horses bringing in their own shavings will pay a \$50/stall/week clean-up fee.
9. Non Showing Horse Fee: Non showing horses will pay a \$50 non-showing horse fee.
10. Convenience Fee: all accounts closed with a credit card will pay a convenience fee of 3%.
11. High Jumper Nomination: Horses entered in any 1.20m or higher jumper class must pay a \$150 High Jumper Nominating Fee. This allows jumpers to add/scratch classes at no charge. Horses entered only in the YJC classes DO NOT have to pay the nominating fee.
12. Low Jumper Nomination: Horses or ponies entered in any Jumper classes below 1.20m, and YJC classes must pay a \$50 Low Jumper Nominating Fee. This allows jumpers to add/scratch classes at no charge.
13. Hunter/EQ Nomination: Horses or ponies entered in any hunter or equitation classes must pay a \$50 Hunter/EQ Nominating Fee. This allows hunters/equitation horses to add/scratch classes at no charge.

# RULES & REGULATIONS

## Awards and Prize Money.

1. All regular class winners will receive a Prize Ticket or trophy and ribbons thru 8th place, in addition to any prize money.
2. HUNTER Show Champion and Reserve: Hunter champion and reserve will be awarded to 2 of the 4 horses scoring the most points over fences. In addition, only these will receive full points for ribbons won under saddle and half points for ribbons won in the model. Points will be awarded: 10, 6, 4, 2, 1, 1/2.
3. JUMPER Show champion and Reserve: Jumper champion and reserve based on points awarded 10, 6, 4, 2, 1, 1/2. Exception: Junior/amateur jumper will be based on money won.
4. EQUITATION Show Champion and Reserve: Equitation champion and reserve based on points awarded: 5, 3, 2, 1.
5. Prize money will be paid by check made payable to the owner or payee listed on the entry form and mailed to the owner within thirty (30) days after the close of the show. NO PRIZE MONEY WILL BE MAILED UNLESS THE OWNER'S or PAYEE'S SOCIAL SECURITY/TAX ID NUMBER IS LISTED ON THE ENTRY FORM. **Prize money checks will be void and not reissued after 90 days.** Prize money in all classes, excluding Special Classes and Welcome Jumpers, will be divided 30%, 25%, 20%, 15%, 10%. Prize Money for Special Classes will be distributed as follows unless otherwise stated. Internal Revenue Service requires 30% of prize money won by foreign exhibitors to be withheld. Foreign exhibitors should apply for a US Social Security number and are required to complete a W-8 Certificate of Foreign Status Form.

\$	1	2	3	4	5	6	7	8	9	10
<b>\$500</b>	\$150	\$100	\$75	\$65	\$60	\$50				
<b>\$1,000 Jumper</b>	\$300	\$165	\$110	\$95	\$90	\$85	\$80	\$75		
<b>\$1000 Hunter</b>	\$300	\$220	\$150	\$100	\$80	\$60	\$50	\$40		
<b>\$1,500</b>	\$450	\$300	\$210	\$150	\$120	\$105	\$90	\$75		
<b>\$2,000</b>	\$600	\$400	\$280	\$200	\$160	\$140	\$120	\$100		
<b>\$2,500</b>	\$750	\$450	\$300	\$250	\$200	\$200	\$175	\$175		
<b>\$4,000</b>	\$1,200	\$800	\$560	\$400	\$320	\$280	\$240	\$200		
<b>\$5,000</b>	\$1,500	\$1,000	\$700	\$500	\$400	\$350	\$300	\$250		
<b>\$9,500</b>	\$2,850	\$1,900	\$1,330	\$950	\$760	\$665	\$570	\$475		
<b>\$10,000</b>	\$3,000	\$2,000	\$1,400	\$1,000	\$800	\$700	\$600	\$500		
<b>\$15,000</b>	\$4,500	\$3,000	\$2,250	\$1,500	\$900	\$750	\$600	\$600	\$450	\$450

### USHJA International Hunter Derby

**\$10,000-** \$3,000, \$2,200, \$1,300, \$800, \$600, \$500, \$400, \$300, \$300, \$200, \$200, \$200

### USHJA National Hunter Derby

**\$2,500-** \$750, \$550, \$325, \$200, \$150, \$125, \$100, \$75, \$75, \$50, \$50, \$50

### Hillcrest Training Local Hunter Derby

**\$1,000-** \$300, \$165, \$110, \$95, \$90, \$85, \$80, \$75

### USHJA Green Hunter Incentive Stake Class

**\$1,000-** \$300, \$220, \$130, \$80, \$60, \$50, \$40, \$30, \$30, \$20, \$20, \$20

## GENERAL INFORMATION

1. Schooling and Haul-Ins - There is a mandatory Schooling/Office/Grounds fee. The arena will be available for schooling rounds on the day prior to the first day of the show from 9 a.m. to 5 p.m. See schedule for heights and times. Horses hauling in for Schooling will pay a fee and must sign a release Waiver. Horses hauling in for the day to show and not purchasing a stall will be charged a fee. Please see Fee Schedule for pricing.
2. Poling - Poling is prohibited.
3. Minors who do not have a valid driver's license which allows them to operate a motorized vehicle in the state in which they reside will not be permitted to operate a motorized vehicle of any kind, including, but not limited to, golf carts, motorcycles, scooters, or farm utility vehicles, on the competition grounds of licensed competitions. Minors who have a valid temporary license may operate the above described motorized vehicles as long as they are accompanied by an adult with a valid driver's license. The parent/legal guardian or individual who signs the entry blank as a parent or guardian of a minor operating a motorized vehicle in violation of this rule are solely responsible for any damages, claims, losses or actions resulting from that operation. Violations of this rule will be cause for penalties against those responsible for the child committing the offense. Wheelchairs and other mobility assistance devices for individuals with disabilities are exempt from this rule. The unsafe use of personal electronic transport devices, as determined by the competition officials and management in their sole discretion, that do not require a driver's license to operate, including but not limited to segways, hover boards, and single wheeled scooters is prohibited on competition grounds. Operating such devices in areas where people gather may be deemed "unsafe use" if there is a risk of harm to others. If the operator of the device is a minor, the parent/legal guardian or individual who signs the entry blank as a parent or guardian of a minor operating the device in violation of this rule is accountable and may be subject to penalties. Wheelchairs and other mobility assistance devices for individuals with disabilities are exempt from this rule. (GR 1301.7)
4. The unsafe use of personal electronic transport devices, as determined by the competition officials and management in their sole discretion, that do not require a driver's license to operate, including but not limited to segways, hover boards, and single wheeled scooters is prohibited on competition grounds. Operating such devices in areas 192 © USEF 2021 where people gather may be deemed "unsafe use" if there is a risk of harm to others. If the operator of the device is a minor, the parent/legal guardian or individual who signs the entry blank as a parent or guardian of a minor operating the device in violation of this rule is accountable and may be subject to penalties. Wheelchairs and other mobility assistance devices for individuals with disabilities are exempt from this rule. (GR 1301.8)
5. Dogs. All dogs must be under leash control at all times.
6. Sharps. Sharps containers will be placed in convenient places in the stabling area. Competition management may fine any individuals including trainers, owners, exhibitors, or their agents up to \$100 for improper disposal of needles or other sharp disposable instruments. (GR 1210.4)
7. Arenas, warm-up areas. Wilsonville – all arenas have all weather fiber and sand footing. Jumper arena is 170' x 350'; hunter arenas 150' x 300'; hunter derby arena 300'x300'; lunging arena 50,000 square feet; schooling/exercise areas 91,000 square feet.
8. Stabling. 10 x 10 box stalls with full doors and natural/grass floors are provided. Stalls are available from 1:00 p.m. two days before the start of the show through 9 p.m. Sunday. Stalls and tack rooms for the duration of the show are priced for each show on the respective Entry Blank. Day stalls may also be available – please call Show Secretary. Bag shavings are available for purchase.
9. RV hookups. RV hookups for the duration of the show are available on a limited basis. See respective Entry Blank for pricing.

# RULES & REGULATIONS

10. Clean-up Fee: Exhibitors supplying their own shavings at the show will pay a Clean-Up fee (see fee schedule).
11. Protective headgear. It is compulsory for all persons at Federation licensed hunter, jumper or hunter/ jumper competitions when mounted anywhere on the competition grounds, to wear properly fastened protective headgear which meets or exceeds ASTM (American Society for Testing and Materials)/SEI (Safety Equipment Institute) standards for equestrian use and carries the SEI tag. It must be properly fitted with harness secured. Exception: In Hunter or Jumper classes, adults may be allowed to remove their headgear while accepting prizes and during the playing of the National Anthem only; they must refasten their headgear prior to the lap of honor. A Show Committee must bar riders without protective headgear from entering the ring for classes in which protective headgear is required and may bar any entry or person from entering the ring if not suitably presented to appear before an audience.
12. Attire. Proper attire is required in all rings during competition.
13. Jog. As per USEF rule HU118.3 we will be utilizing Option A; Horses/ponies are required to trot a circle on a loose rein at the end of each over fences performance. Horses/ponies may be asked to return to the ring and trot another circle at the Judge's discretion.
14. Protests. Any rider, driver, handler, vaulter, longeur, exhibitor, owner, agent, trainer or parent of a junior exhibitor, or any life, senior or junior member present at the competition may file a protest with the show committee of a licensed competition or with the Federation hearing committee alleging violation of any Federation rule(s). The protest must be a) in writing; b) signed by the protester; c) addressed to show committee of the competition at which the alleged violation occurred, or to the hearing committee; d) accompanied by a deposit of \$200 if made by a Federation member or parent of a junior exhibitor member, or \$300 if made by a nonmember; e) received by the steward, member of the show committee, competition manager or secretary within 48 hours of the alleged violation. If made directly to the hearing committee, the protest must be received at the Federation office by the 10th business day following the last recognized day of the competition, or by the 10th business day following the date on which the alleged violation occurred if it occurred other than at a licensed competition.
15. Jumper orders. The order of go will be drawn and for jumper classes with a jump-off, horses will go in the original drawn order.
16. Time Allowed: The time allowed will be based on a speed of 360 yards per minute for pony jumpers, and 382 yards per minute for all the other sections unless otherwise noted, and may be adjusted accordingly.
17. Martingales: In jumper classes offered at 1.30m and below, there are no martingale restrictions when used in a conventional manner. JP111.1a.
18. Ties: Ties involving first place in jumper classes will be jumped off. Ties not involving first place will be decided upon by time unless otherwise stated.
19. Two Level Jumper Classes: Jumper classes may be combined and run as two level classes if lack of entries warrant. See JP 122.1c.
20. Zone Specifications: This competition is in USHJA Zone 9. Please see Zone 9 Specifications (MT, WY, ID, OR, WA) at [www.ushja.org](http://www.ushja.org).
21. For the purposes of eligibility and cross entry corresponding heights are:

Height (metric equivalent height)	Corresponding JP/EQ metric Class fence heights used for Hunter and Equitation cross entry and eligibility
2'3" (.69 meters)	.70 meters
2'6" (.76 meters)	.75 meters
2'9" (.84 meters)	.85 meters
3'0" (.91 meters)	.90 meters
3'3" (1.00 meters)	1.00 meters
3'6" (1.07 meters)	1.10 meters
3'9" (1.14 meters)	1.15 meters
4'0" (1.22 meters)	1.20 meters
4'3" (1.30 meters)	1.30 meters
4'6" (1.37 meters)	1.40 meters

# RULES & REGULATIONS

## SPECIAL CLASS CONDITIONS:

Horses scratching from Special Classes are subject to the special class Scratch Fee. Scratching special classes AFTER 5 PM the day before the class results in forfeiture of all entry fees. Formal attire is required in all special classes. Special classes will not count toward show champion and reserve awards. Horses must have entered and shown in at least one other class at the horse show to be eligible for Special Classes.

### Special Hunter Classes:

**USHJA International Hunter Derby:** This class will consist of two courses, a traditional hunter classic course and a handy hunter course. The top 12 horses from the First Round will be invited back for the Handy Round. A minimum of 10 horses MUST be entered in each derby for the respective class to run. For complete specs please visit [www.ushja.org/competition/hunter/international-hunter-derby](http://www.ushja.org/competition/hunter/international-hunter-derby).

**USHJA National Hunter Derby:** This class will consist of two courses, a traditional hunter classic course and a handy hunter course. The top 12 horses from the First Round will be invited back for the Handy Round. A minimum of 10 horses MUST be entered in each derby for the respective class to run. Fences 3'0" with options to 3'5". For complete specs please visit [www.ushja.org/competition/hunter/national-hunter-derby](http://www.ushja.org/competition/hunter/national-hunter-derby).

**USHJA Green Hunter Incentive Stake:** This is a two round class open to horses of any age that are eligible to compete as a Green 3'0", 3'3", 3'6" or 3'9" Hunter under Federation rules that are enrolled the USHJA Green Hunter Incentive Program. The first round will be the last over-fences class in the respective Green divisions. At least 12 horses, if available, must return for the second round. For complete membership and participation requirements, go to [www.ushja.org/competition/hunter/green-hunter-incentive-program](http://www.ushja.org/competition/hunter/green-hunter-incentive-program).

**Hillcrest Training Local Hunter Derby:** This class will consist of two courses, a traditional hunter classic course and a handy hunter course. The top 12 horses from the First Round will be invited back for the Handy Round. Open to Juniors and Amateurs. No cross entry into any hunter class with fences above 2'9" with the exception of the Large Pony Hunters. No cross entry into any jumper class with fences above 0.95m. Fences 2'6" with options to 2'9". A minimum of 10 horses MUST be entered in each derby for the respective class to run.

**\*\*For all USHJA Special classes and Zone IX USHJA HOTY Jumper and Equitation Championships, please refer to specifications at USHJA.org**

### Special Jumper Classes:

**Team NW Jumper Classics, Team NW Mini Prix and Welcome Jumper:** Classes to be run under Table II Sec. 2(a). See class lists for show- specific jump height and prize money. NOTE: All of these classes MUST have at least 10 entries to run.

**OHJA Medal Classes:** Classes open to OHJA junior and amateur members in good standing. See OHJA Rule Book for specific information, available online at: [www.oregonhunterjumper.org](http://www.oregonhunterjumper.org).

## DIRECTIONS TO HUNTER CREEK EQUESTRIAN PARK:

14441 SW Wilsonville Rd., Wilsonville, OR 97070. From Interstate 5, take Wilsonville exit 283. Turn West (left if headed north, right if headed south). Continue 3.5 miles. Hunter Creek Farm will be on your right.

## IMPORTANT WEBSITES

**For updates to this prize list, visit [www.teamnwquestriansports.com](http://www.teamnwquestriansports.com)**

**For rules, regulations and specifications, visit [www.usef.org](http://www.usef.org), [www.ushja.org](http://www.ushja.org) and [www.oregonhunterjumper.org](http://www.oregonhunterjumper.org)**

**For entry forms, visit [showgroundslive.com](http://showgroundslive.com)**