


TEAM NW

EQUESTRIAN SPORTS

COUNTRY CLASSIC PREVIEW JULY 7-10, 2022
USEF NATIONAL RATED, JUMPER LEVEL II

COUNTRY CLASSIC JULY 13-17, 2022
WCHR MEMBER EVENT, USEF NATIONAL RATED, JUMPER LEVEL II

HUNTER CREEK EQUESTRIAN PARK - WILSONVILLE, OR



LEWIS & CLARK
COLLEGE LAW SCHOOL

- ADJUNCT LAW
PROFESSOR, EQUINE
LAW 2013/2014

OREGON STATE BAR
ANIMAL LAW SECTION

- CHAIR, 2012-2013
- CHAIR ELECT, 2011

OREGON HORSE COUNTRY

- CHAIR, 2014, 2015, 2017
- VICE CHAIR, 2013

OREGON HUNTER
JUMPER ASSOCIATION

- PRESIDENT, 2007, 2009 - 2013
- VICE PRESIDENT, 2006, 2008, 2014, 2017-2018

MEMBER

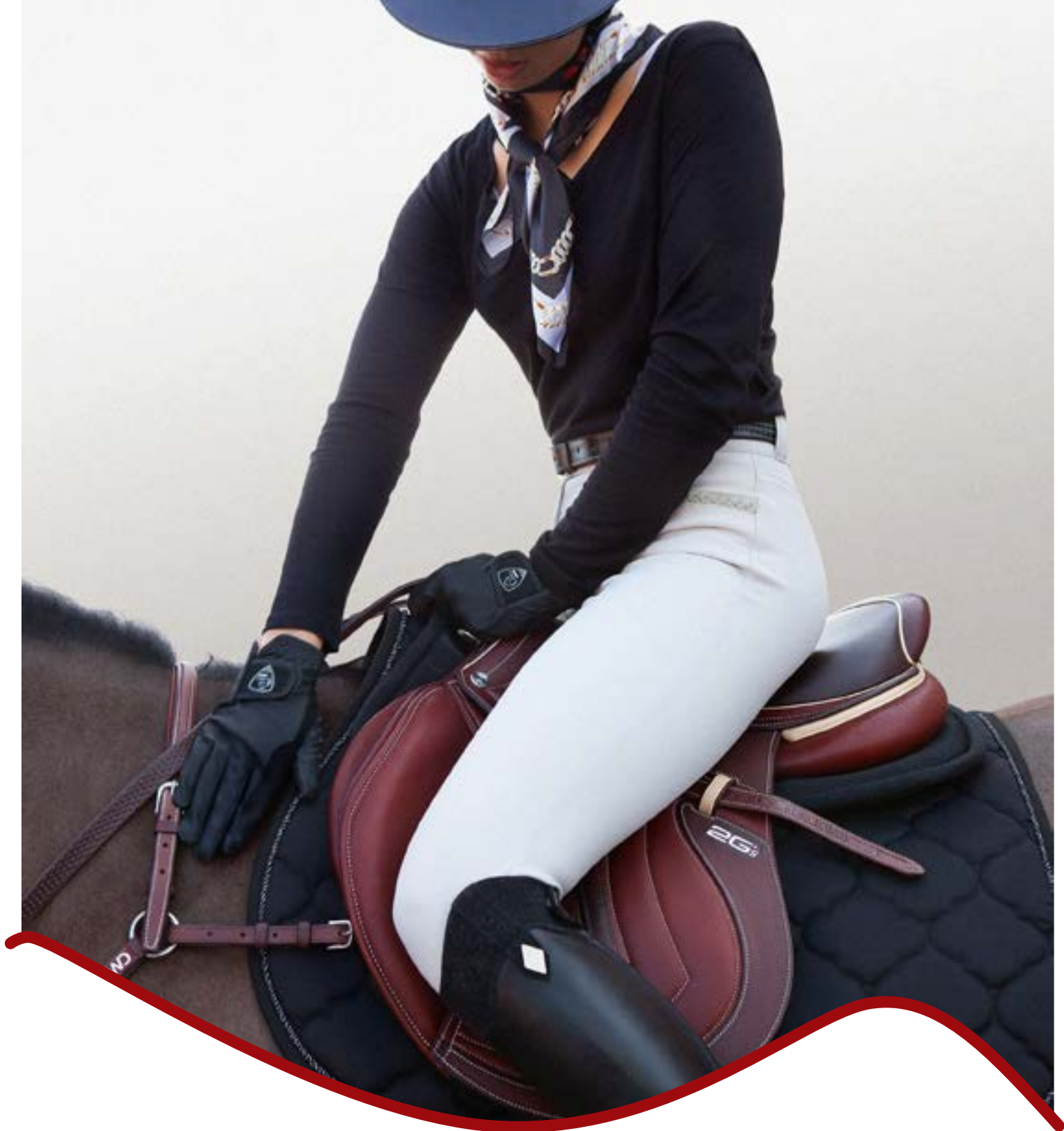
- US DRESSAGE FEDERATION
- US EQUESTRIAN FEDERATION
- OREGON DRESSAGE SOCIETY
- US HUNTER JUMPER ASSOCIATION
- WASHINGTON STATE BAR ASSOCIATION
ANIMAL LAW SECTION

Kathryn A. Hall PC

ATTORNEY *at* LAW

OREGON AND WASHINGTON • 971-404-5296 • PNWEQUINELAW.COM

Horse sales, leases, and breeding • Boarding, training, and riding instruction • Risk assessment and management
• Ownership and registration • Business entity formation, governance, taxation, and employment •
Veterinary malpractice and negligence • Horse and rider injuries • Debt collection and creditors' rights



CWD

We care. You ride.



2G^s
Mademoiselle

TEAM NW

EQUESTRIAN SPORTS

COUNTRY CLASSIC PREVIEW

July 7 - 10, 2022

Entries Close June 15th

Hunter Creek Equestrian Park - Wilsonville, OR

USEF National Rated - USEF Jumper Rated 2

Hunter/Equitation Judge.....Ms. Penny Wahler - *Encinitas, CA*

Hunter/Equitation Judge.....Mrs. Lucy Alabaster - *Phoenix, AZ*

Equitation/Jumper Judge.....Ms. Cindy Ross - *Camas, WA*

Course Designer.....Mr. John Manning - *Shelburne Falls, MA*

Course Designer.....Mike Gallaway - *Eugene, OR*

USEF Steward.....Ms. Sharon Stewart-Wells - *Carlsbad, CA*

Licensee.....Triple Rise Horse Show Management

Show Manager.....Mike Gallaway - *Eugene, OR*

(541) 954-5312

Community Relations & Sponsorship.....Chad Campf - *Aurora, OR*

(503) 970-7375

Show Secretary.....Mollie Gallaway - *Eugene, OR*

(541) 914-0052

Veterinarian.....Lisa Campbell, DVM - *Oregon City, OR*

(971) 269-9207

Farrier.....TBA.... *Will be posted in the show office....*

PhotographerGrand Pix - *Thermal, CA*

www.grandpixphoto.com

Social Media and Website.....Kindy Poole - *Portland, OR*

Nearest Hospital.....Providence Newberg Medical Center 1001 Providence Dr. Newberg, OR 97132

9.5 miles from the Hunter Creek

Nearest Level I Trauma Center OHSU Hospital 3181 SW Sam Jackson Park Rd, Portland OR 97239

20 miles from the Hunter Creek

Nearest Veterinary Hospital.....OSU Veterinary Hospital 172 Magruder Hall, Corvallis, OR 97331

71.5 miles from Hunter Creek

Country Classic Preview #298038: USEF National Hunter, Jumper 2

Country Classic #316987: USEF National Hunter, Jumper 2

**FINALLY,
THE INSURANCE YOU NEED
AT A PRICE YOU CAN AFFORD**



HEALTH & INSURANCE BENEFITS



Now with just a few clicks, you can purchase the valuable coverage you and your family need.

You deserve the peace of mind that comes with having affordable, easy-to-understand benefits for you and your family. Now with your paid-fan or competing **USEF Membership**, you can sign up for a range of benefits from well-known, established insurance companies, with savings up to 35% or more!

You Can Get Coverage For...



Individual/
Family Health
Insurance



Teledoc



Global Health
Insurance



Personal Liability,
Death & Disability
Insurance



Group Health
Insurance



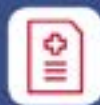
Free Mental
Health First Aid



Ground & Air
Ambulance



Financial
Lock



Dental, Vision, Disability, Accident,
Critical Illness, and Life Insurance



Farm, Equine, & Pet Insurance

 These benefits can be customized for individuals, families, business owners, executives, and your employees

Visit **USEF.org/insurance** to learn more and find your rate today.
Or call us at **(800) 349-1082** to speak with your USEF benefits team.



HUNTERS*class index***Rated Hunter Sections - Hunter/Equitation Nominating Fee \$50**

<i>DIVISION/CLASS</i>	<i>HEIGHT</i>	<i>CLASS NUMBER</i>	<i>DIVISION FEE</i>	<i>CLASS FEE</i>	<i>PRIZE \$</i>
Young Hunter 2'9" Open to horses 5 years old and younger	2'9"	8, 9, 10	\$150	-	-
Young Hunter 3' Open to horses 6 years old and younger	3'	18, 19, 20	\$150	-	-
Young Hunter 3'3" Open to horses 7 years old and younger	3'3"	214, 215, 216	\$150	-	-
Green Hunter 3'	3'	23, 24, 25	\$175	-	\$350
Green Hunter 3'3"	3'3"	28, 29, 30	\$175	-	\$350
Green Hunter 3'6"	3'6"	47, 48, 49	\$175	-	\$500
Green Hunter 3'9"	3'9"	52, 53, 54	\$175	-	\$500
Conformation Hunter Model	-	56	-	\$35	-
Conformation Hunter	3'6"/3'9"	57, 58, 59	\$175	-	\$500
Performance Hunter 3'3'	3'3"	43, 44, 45	\$175	\$55	\$400
Performance Hunter 3'6'	3'6"	69, 70, 71	\$175	\$55	\$500
High Performance Hunter	3'9"	63, 64, 65	\$190	\$70	\$750
Amateur Owner Hunter 18-35	3'6"	72, 73, 74, 75, 76	\$275	-	\$500
Amateur Owner Hunter 36 & Over	3'6"	77, 78, 79, 80, 81	\$275	-	\$500
Amateur Owner Hunter 3'3" 18-35	3'3"	152, 153, 154, 155, 156	\$275	-	\$500
Amateur Owner Hunter 3'3" 36 & Over	3'3"	238, 239, 240, 241, 242	\$275	-	\$500
Small Junior Hunter 15 & Under	3'6"	97, 98, 99, 100, 101	\$275	-	\$500
Small Junior Hunter 16-17	3'6"	102, 103, 104, 105, 106	\$275	-	\$500
Large Junior Hunter 15 & Under	3'6"	107, 108, 109, 110, 111	\$275	-	\$500
Large Junior Hunter 16-17	3'6"	112, 113, 114, 115, 116	\$275	-	\$500
Junior Hunter 3'3" Small 15 & Under	3'3"	207, 208, 209, 210, 211	\$275	-	\$500
Junior Hunter 3'3" Large 15 & Under	3'3"	514, 515, 516, 517, 518	\$275	-	\$500
Junior Hunter 3'3" Small 16-17	3'3"	519, 520, 521, 522, 523	\$275	-	\$500
Junior Hunter 3'3" Large 16-17	3'3"	524, 525, 526, 527, 528	\$275	-	\$500
Small Pony Hunter	2'3"	127, 128, 129, 130, 131	\$250	-	\$400
Medium Pony Hunter	2'6"	132, 133, 134, 135, 136	\$250	-	\$400
Large Pony Hunter	3'	137, 138, 139, 140, 141	\$250	-	\$400
Small/Medium Green Pony	2'3"-2'6"	142, 143, 144, 145, 146	\$250	-	\$250
Large Green Pony Hunter	2'9"	167, 168, 169, 170, 171	\$250	-	\$250

C-Rated Hunter Sections - Hunter/Equitation Nominating Fee \$50

DIVISION/CLASS	HEIGHT	CLASS NUMBER	DIVISION FEE	CLASS FEE
TAKE2 Thoroughbred Hunter Open to Jockey Club registered Thoroughbreds.	3'	230, 231, 232	\$140	\$55
Small Hunter Open to horses over 14.2 but not over 16.0 hands.	3'	33, 34, 35	\$140	\$55
Adult Hunter 18-39	3'	82, 83, 84, 85, 86	\$220	\$55
Adult Hunter 40-55	3'	87, 88, 89, 90, 91	\$220	\$55
Adult Hunter 56 & Over	3'	92, 93, 94, 95, 96	\$220	\$55
Children's Hunter 13 & Under	3'	117, 118, 119, 120, 121	\$220	\$55
Children's Hunter 14-17	3'	122, 123, 124, 125, 126	\$220	\$55
Children's Hunter Pony	2'/2'3"/2'6"	147, 148, 149, 150, 151	\$220	\$55
USHJA 2' Hunter	2'	235, 236, 237	\$140	\$55
USHJA 2'3" Hunter	2'3"	245, 246, 247	\$140	\$55
USHJA 2'6" Hunter	2'6"	13, 14, 15	\$140	\$55
USHJA 2'9" Hunter	2'9"	248, 249, 250	\$140	\$55
USHJA 3' Hunter	3'	253, 254, 255	\$140	\$55

Non-Rated Hunter Sections - Hunter/Equitation Nominating Fee \$50

DIVISION/CLASS	HEIGHT	CLASS NUMBER	DIVISION FEE	CLASS FEE
Schooling Hunter Open to all hunters and ponies. See schedule for fence heights.	-	276, 287, 289, 290, 291, 294	-	\$55
Baby Green Hunter Open to a horse of any age in its first year of showing.	2'6"	3, 4, 5	\$140	\$55
Large Hunter Open to horse 16.0 hands and over. Fences 3'.	3'	38, 39, 40	\$140	\$55
Short Stirrup Hunter Pony Open to any pony and junior rider. Rider may not cross enter into any hunter class with fences above 2'3". May be combined with short Stirrup Horse. Respective heights.	18"	182, 183, 184, 185, 186	\$220	\$55
Short Stirrup Hunter Horse Open to any horse and junior rider. Rider may not cross enter into any hunter class with fences at 2'9" or higher.	2'-2'3"	187, 188, 189, 190, 191	\$220	\$55
Long Stirrup Hunter Open to any horse and amateur rider. Rider may not cross enter into any hunter class with fences at 2'9" or higher.	2'-2'3"	192, 193, 194, 195, 196	\$220	\$55
Modified Child Hunter Open to any horse and junior rider. Rider may not cross enter into any class with fences exceeding 3'.	2'9"	172, 173, 174, 175, 176	\$220	\$55
Modified Adult Hunter Open to any horse and amateur rider. Rider may not cross enter into any class with fences exceeding 3'.	2'9"	177, 178, 179, 180, 181	\$220	\$55
Low Children's Hunter Open to junior Riders. ZONE SPECIFICATIONS will be followed	2'6"	202, 203, 204, 205, 206	\$220	\$55
Low Adult Hunter Open to amateur riders. ZONE SPECIFICATIONS will be followed	2'6"	197, 198, 199, 200, 201	\$220	\$55

Opportunity Sections

DIVISION/CLASS	HEIGHT	CLASS NUMBER	DIVISION FEE	CLASS FEE
Walk Trot Hunter Opportunity	-	701,702,703	-	\$30
Walk Trot Equitation Opportunity	-	704,705,706	-	\$30

EQUITATION*class index***Equitation Sections - Hunter/Equitation Nominating Fee \$50**

DIVISION/CLASS	HEIGHT	CLASS NUMBER	DIVISION FEE	CLASS FEE
Equitation 11 & Under No cross entry into Restricted Equitation	3'	312, 313, 314	\$150	\$55
Equitation 12-14 No cross entry into Restricted Equitation	3'	300, 301, 302	\$150	\$55
Equitation 15 - 17 No cross entry into Restricted Equitation	3'	309, 310, 311	\$150	\$55
Adult Equitation 18-39	3'	330, 331, 332	\$150	\$55
Adult Equitation 40-55	3'	327, 328, 329	\$150	\$55
Adult Equitation 56 & Over	3'	333, 334, 335	\$150	\$55
Pony Equitation	2'3", 2'6", 2'9"	315, 316, 317	\$150	\$55
Restricted Equitation 13 & Under Open to junior riders. Rider may not cross enter into any class with fences exceeding 3'3".	3'	303, 304, 305	\$150	\$55
Restricted Equitation 14 - 17 Open to junior riders. Rider may not cross enter into any class with fences exceeding 3'3".	3'	306, 307, 308	\$150	\$55
Modified Child/Adult Equitation Riders may not cross enter into any class exceeding 3'.	2'9"	379, 380, 381	\$150	\$55
Low Adult Equitation Open to amateur riders. Riders may not cross enter into any class exceeding 2'9".	2'6"	336, 337, 338	\$150	\$55
Low Child Equitation Open to junior riders. Riders may not cross enter into any class exceeding 2'9".	2'6"	318, 319, 320	\$150	\$55
Long Stirrup Equitation Open to any amateur rider. Riders may not cross enter into any class with fences exceeding 2'6".	2'3"	324, 325, 326	\$150	\$55
Short Stirrup Equitation Open to any junior rider. Riders may not cross enter into any class with fences exceeding 2'6".	2'3"	321, 322, 323	\$150	\$55
Children's Pony Equitation Open to any pony and junior rider. Rider may not cross enter any equitation class with fences at 3' or higher.	2', 2'3", 2'6"	162, 163, 164	\$150	\$55

Medal Section - Hunter/Equitation Nominating Fee \$50

CLASS	HEIGHT	CLASS NUMBER	CLASS FEE
Hamel Foundation NHS 3'3" Medal	3'3"	373	\$55
Dover Saddlery/USEF Hunter Seat Medal	3'6"	350	\$55
ASPCA Horsemanship Class	3'6"	351	\$55
WIHS Equitation Classic Hunter Phase	3'6"	353	\$55
WIHS Equitation Classic Jumper Phase	3'6"	354	\$55
WIHS Equitation Classic Combined	-	355	-
OHJA Foundation Medal	2'3"	165	\$55
OHJA Mini Medal	2'6"	358	\$55
OHJA Children's Medal	3'	359	\$55
OHJA Adult Medal	3'	360	\$55
OHJA Junior/Senior Medal 3'3"	3'3"	361	\$55
OHJA Junior/Senior Medal	3'6"	362	\$55
THIS Children's Medal	3'	363	\$55
THIS NHS Adult Medal	3'	374	\$55
Ariat National Adult Medal	3'	364	\$55
USEF Adult Medal	3'3"	356	\$55
Marshall & Sterling U.S. Pony Medal	2'3/2'6"/3'	357	\$55
EMO Insurance/USHJA Jumping Seat Medal 3'3"	3'3"	371	\$55
USHJA Hunter Seat Medal 3'3"	3'3"	375	\$55
Platinum Performance/USEF Talent Search 1*	3'9"	352	\$55
USEF/NCEA Junior Hunter Seat Medal	3'3"	372	\$55
WSHJA Good Seat & Hands Class 2'6"	2'6"	376	\$55
WSHJA Good Seat & Hands Class 3'	3'	377	\$55
WSHJA Good Seat & Hands Class 3'6"	3'6"	378	\$55

Nominated Jumper Sections - High Jumper Nomination Fee \$150

<i>DIVISION/CLASS</i>	<i>HEIGHT</i>	<i>CLASS NUMBER</i>	<i>CLASS FEE</i>	<i>PRIZE \$</i>
Low Junior/Amateur Jumper	1.25m	473, 474, 475	\$60	\$600
1.20m Jumper	1.20m	440, 441, 442	\$60	\$600
1.30m Jumper	1.30m	445, 446, 447	\$65	\$750

Jumper Sections - Low Jumper Nomination Fee \$50

<i>DIVISION/CLASS</i>	<i>HEIGHT</i>	<i>CLASS NUMBER</i>	<i>CLASS FEE</i>
0.70m Jumper	0.70m	401, 402, 403	\$55
0.70m Children's/Adult Jumper	0.70m	497, 498, 499	\$55
0.80m Jumper	0.80m	502, 503, 504	\$55
0.80m Children's/Adult Jumper	0.80m	411, 412, 413	\$55
0.90m Jumper	0.90m	416, 417, 418	\$55
0.90m Low Children's/Adult Jumper	0.90m	421, 422, 423	\$55
1.00m Jumper	1.00m	426, 427, 428	\$55
1.00m Low Children's/Adult Jumper	1.00m	460, 461, 462	\$55
Take2 Thoroughbred Jumper	1.00m	507, 508, 509	\$55
1.10m Jumper	1.10m	431, 432, 433	\$55
High Children's Jumper	1.10m	482, 483, 484	\$55
High Adult Jumper	1.10m	486, 487, 488	\$55
1.15m Jumper	1.15m	436, 437, 438	\$55
Modified Junior/Amateur Jumper	1.15m	470, 471, 472	\$55
Pony Jumper	1.05m	455, 456, 457, 458	\$55

SPECIAL CLASSES*class index***Special Classes**

CLASS	HEIGHT	CLASS NUMBER	CLASS FEE	POST ENTRY FEE
\$1,000 Child/Adult Jumper Classic Horses must have entered and shown in at least one class in the Children's or Adult Jumper sections.	1.10m	606	\$100	\$25
\$1,500 USHJA Jumper Classic Level 1 All horses are eligible.	1.15m	603	\$150	\$25
\$9,500 USHJA Jumper Classic Level 3 All horses are eligible.	1.30m	600	\$350	\$50
\$500 Low Child/Adult Jumper Classic Horses must have shown in at least one class in the Child or Adult Jumper sections. Prize money to six places and ribbons to eight. No horse-rider combination cross entry between 1.15M Classic and Low Child/Adult Classic. This class will be held at two separate heights. Declare upon entry which height you will be competing at.	0.70m - 0.80m	607	\$75	\$25
\$500 Medium Child/Adult Jumper Classic Same specifications as class 607	0.90m or 1.0m	608	\$75	\$25
\$2,500 USHJA National Hunter Derby	3'-3'5"	621	\$200	\$25
\$1,000 Hillcrest Training Local Hunter Derby	2'6"	624	\$100	\$25
Hillcrest Training Lead Line	-	700	Free	Free

Hunter Classics - If fewer than 10 entries, classics may be combined at managers discretion.

CLASS	HEIGHT	CLASS NUMBER	CLASS FEE	POST ENTRY FEE
\$1,000 Junior & Amateur Owner 3'6" Classic Designated first-round class. Horse must have entered, shown, and completed the course in two Jr or AO Hunter classes over fences at the same show. Classic will be split if more than 10 entrants in each division.	3'6"	800	\$100	\$25
\$1,000 Junior & Amateur Owner 3'3" Classic Designated first-round class. Horse must have entered, shown, and completed the course in two Jr or AO Hunter classes over fences at the same show. Classic will be split if more than 10 entrants in each division.	3'3"	801	\$100	\$25
\$500 Pony Hunter Classic Designated first-round class. Ponies must have entered, shown, and completed the course in two Pony Hunter classes over fences at the same show.	2'3", 2'6", 2'9"	804	\$55	\$25
\$500 Adult Amateur Hunter Classic Designated first-round class. Horse must have entered, shown, and completed the course in two Adult Hunter classes over fences at the same show.	3'	805	\$55	\$25
\$500 Children's Hunter Classic Designated first-round class. Horse/ponies must have entered, shown, and completed the course in two Children's Hunter classes over fences at the same show.	3'	806	\$55	\$25
\$500 Low Adult Hunter Classic Designated first-round class. Horse/ponies must have entered, shown, and completed the course in two Pre-Adult Hunter classes over fences at the same show.	2'6"	807	\$55	\$25
\$500 Low Child Hunter Classic Designated first-round class. Horse/ponies must have entered, shown, and completed the course in two Pre-Child Hunter classes over fences at the same show.	2'6"	808	\$55	\$25
\$500 Long Stirrup Hunter Classic Designated first-round class. Horse/ponies must have entered, shown, and completed the course in two Long Stirrup Hunter classes over fences at the same show.	2'3"	809	\$55	\$25
\$500 Short Stirrup Classic Designated first-round class. Horse/ponies must have entered, shown, and completed the course in two Short Stirrup Hunter classes over fences at the same show.	2'3"	810	\$55	\$25

Standlee/USHJA National Hunter Derby Regional Championships



MCCOOL PHOTOGRAPHY

Offered in Three Sections:
Open, Amateur and Junior

Two Round Format:
Classic Round followed by
a Handy Round

Earn HOTY Bonus Points

No qualifying required!

North Championship:

Brandywine Valley Summer Series
Devon, PA
July 5- 10, 2022

South Championship:

Tyron Summer 5
Mill Spring, NC
July 12-17, 2022

North Central Championship

Split Rock Hunter Jumper Classic II
Lexington, KY
June 14-19, 2022

South Central Championship:

Southwest Showdown
Katy, TX
September 21-25, 2022

Northwest Championship:

Oregon Summer
Wilsonville, OR
August 24-28, 2022

Southwest Championship:

Blenheim June Classic II
San Juan Capistrano, CA
June 15-19, 2022



*To learn more, visit ushja.org/nhdrc
or email hunterdept@ushja.org.*

SCHEDULE OF EVENTS

Wednesday, July 6, 2022 - Schooling Rounds**Hunter 1**

3'3" - 9:00-1:00

3' - 1:00-4:00

Grand Prix Ring

1.10m - 9:00-11:00

1.00m - 11:00-3:00

.85m - 3:00-4:30

Hunter Ring 2

3' - 9:00-12:00

2'6" - 12:00-3:00

2' - 3:00-5:00

253 USHJA 3' Hunter

254 USHJA 3' Hunter

255 USHJA 3' Hunter Under Saddle

33 Small Hunter

34 Small Hunter

35 Small Hunter Under Saddle

38 Large Hunter

39 Large Hunter

40 Large Hunter Under Saddle

230 TAKE2 Thoroughbred Hunter

231 TAKE2 Thoroughbred Hunter

232 TAKE2 Thoroughbred Hunter Under Saddle

Thursday, July 7, 2022**Thursday, Horse Play Hunter Ring 1 - 7:30 am**

56 Conformation Model

47 Green Hunter 3'6"

48 Green Hunter 3'6" Handy

57 Conformation Hunter

58 Conformation Hunter Handy

49 Green Hunter 3'6" Under Saddle

59 Conformation Hunter Under Saddle

52 Green Hunter 3'9"

53 Green Hunter 3'9" Handy

54 Green Hunter 3'9" Under Saddle

63 High Performance Hunter

64 High Performance Hunter Handy

65 High Performance Hunter Under Saddle

69 Performance Hunter 3'6"

70 Performance Hunter 3'6" Handy

71 Performance Hunter 3'6" Under Saddle

43 Performance Hunter 3'3"

44 Performance Hunter 3'3" Handy

45 Performance Hunter 3'3" Under Saddle

28 Green Hunter 3'3"

29 Green Hunter 3'3"

214 Young Hunter 3'3"

215 Young Hunter 3'3"

30 Green Hunter 3'3" Under Saddle

216 Young Hunter 3'3" Under Saddle

23 Green Hunter 3'

24 Green Hunter 3'

18 Young Hunter 3'

19 Young Hunter 3'

25 Green Hunter 3' Under Saddle

20 Young Hunter 3' Under Saddle

Thursday, Kathryn A Hall PC Ring 2- 8:00 am

235 USHJA 2' Hunter

236 USHJA 2' Hunter

237 USHJA 2' Hunter Under Saddle

245 USHJA 2'3" Hunter

246 USHJA 2'3" Hunter

247 USHJA 2'3" Hunter Under Saddle

13 USHJA 2'6" Hunter

14 USHJA 2'6" Hunter

15 USHJA 2'6" Hunter Under Saddle

3 Baby Green Hunter

4 Baby Green Hunter

5 Baby Green Hunter Under Saddle

248 USHJA 2'9" Hunter

249 USHJA 2'9" Hunter

8 Young Hunter 2'9"

9 Young Hunter 2'9"

250 USHJA 2'9" Hunter Under Saddle

10 Young Hunter 2'9" Under Saddle

Thursday, Grand Prix Ring-8:00 am

401 0.70m Jumper Table II Sec. 2b

497 0.70m Child/Adult Jumper Table II Sec. 1

502 0.80m Jumper Table II Sec. 2b

411 0.80m Jumper Table II Sec. 1

416 0.90m Jumper Table II Sec. 2b

421 0.90m Child/Adult Jumper Table II Sec. 1

426 1.00m Jumper Table II Sec. 2b

460 1.00m Child/Adult Jumper Table II Sec. 1

507 1.00m Take 2 Thoroughbred Jumper Table II Sec. 2b

431 1.10m Jumper Table II Sec. 2b

482 1.10m High Children's Jumper Table II Sec. 2b

486 1.10m High Adult Jumper Table II Sec. 2b

436 1.15m Jumper Table II Sec. 2b

470 1.15m Modified Jr./Amateur Table II Sec. 2b

440 1.20m Jumper Table II Sec. 2b

473 Low Jr./Amateur Jumper 1.20m Table II Sec. 2b

445 1.30m Jumper Table II Sec. 2b

Friday, July 8, 2022**Friday, Aleron Derby Ring - 8:00 am**

Ticketed Derby Schooling

8:00 am - 2'6"

9:00 am - 3'0"

Friday, Aleron Derby Ring - 10:00 am

309 Equitation 15-17

310 Equitation 15-17

311 Equitation 15-17 Flat

300 Equitation 12-14

301 Equitation 12-14

302 Equitation 12-14 Flat

312 Equitation 11 & Under

313 Equitation 11 & Under

314 Equitation 11 & Under Flat

361 OHJA Jr./Sr. 3'3' Medal

362 OHJA Jr./Sr. Medal

350 Dover Saddlery/USEF Hunter Seat Medal

353 WIHS Equitation Classic (Hunter Phase)

— Break —

621 \$2,500 USHJA National Hunter Derby

624 Hillcrest Training Local Hunter Derby

Friday, Horse Play Hunter Ring 1- 8:00 am

294 Schooling 3'

330, 327, 333 Adult Equitation

331, 328, 334 Adult Equitation

332 Adult Equitation 18-39 Flat

329 Adult Equitation 40-55 Flat

335 Adult Equitation 56 & Over Flat

360 OHJA Adult Medal

292 Schooling 3'

303 Restricted Equitation 13 & under

304 Restricted Equitation 13 & under

SCHEDULE OF EVENTS

305 Restricted Equitation 13 & under Flat
 306 Restricted Equitation 14-17
 307 Restricted Equitation 14-17
 308 Restricted Equitation 14-17 Flat
 359 OHJA Children's Medal
 379 Modified Child/Adult Equitation
 380 Modified Child/Adult Equitation
 381 Modified Child/Adult Equitation Flat
 293 Schooling Pony Hunter
 315 Pony Equitation Over Fences
 316 Pony Equitation Over Fences
 317 Pony Equitation Flat

Friday Kathryn A Hall PC Ring 2- 8:00 am

290 Schooling Hunter 2'
 187 Short Stirrup Hunter Horse
 188 Short Stirrup Hunter Horse
 191 Short Stirrup Hunter Horse Undersaddle
 182 Short Stirrup Hunter Pony
 183 Short Stirrup Hunter Pony
 186 Short Stirrup Hunter Pony Undersaddle
 192 Long Stirrup Hunter
 193 Long Stirrup Hunter
 196 Long Stirrup Hunter Undersaddle
 289 Schooling Hunter 2'6"
 197 Low Adult Hunter
 198 Low Adult Hunter
 202 Low Child Hunter Horse
 203 Low Child Hunter Horse
 199 Low Adult Hunter Under Saddle
 204 Low Child Hunter Horse Under Saddle
 358 OHJA Mini Medal
 701 Walk Trot Hunter Opportunity
 704 Walk Trot Equitation Opportunity
 162 Children's Pony Equitation
 163 Children's Pony Equitation
 164 Children's Pony Equitation Flat
 165 OHJA Foundation Medal

Friday, Grand Prix Ring- 7:30 am

354 WIHS Equitation Classic Jumper Phase
 352 Platinum Performance/USEF Talent Search 1*
 437 1.15m Jumper Table II Sec. 2b
 471 1.15m Modified Jr./Amateur Table II Sec. 2b
 441 1.20m Jumper Table II Sec. 2b
 474 Low Jr./Amateur Jumper 1.20m Table II Sec. 2b
 446 1.30m Jumper Table II Sec. 2b
 432 1.10m Jumper Table II Sec. 2b
 483 1.10m High Children's Jumper Table II Sec. 2b
 487 1.10m High Adult Jumper Table II Sec. 2b
 427 1.00m Jumper Table II Sec. 2b
 461 1.00m Child/Adult Jumper Table II Sec. 1
 508 1.00m Take 2 Thoroughbred Jumper Table II Sec. 2b
 417 0.90m Jumper Table II Sec. 2b
 422 0.90m Child/Adult Jumper Table II Sec. 1
 503 0.80m Jumper Table II Sec. 2b
 412 0.80m Jumper Table II Sec. 1
 402 0.70m Jumper Table II Sec. 2b
 498 0.70m Child/Adult Jumper Table II Sec. 1

Saturday, July 9, 2022

Saturday, Horse Play Hunter Ring 1- 8:00 am

152,238 Amateur Owner Hunter 3'3"
 153,239 Amateur Owner Hunter 3'3"
 207,519,514,524 Junior Hunter 3'3"
 208,520,515,525 Junior Hunter 3'3"
 375 USHJA Hunter Seat Medal
 286 Schooling Hunter 3'6"

72,77 Amateur Owner Hunter
 73,78 Amateur Owner Hunter
 97,102,107,112 Junior Hunter
 98,103,108,113 Junior Hunter
 351 ASPCA Maclay Horsemanship Class
 287 Schooling Hunter 3'
 82,87,92 Adult Amateur Hunter
 83,88,93 Adult Amateur Hunter
 356 USEF Adult Medal
 364 Ariat Adult Medal
 295 Schooling 3'
 117 Children's Hunter 13 & under
 118 Children's Hunter 13 & under
 122 Children's Hunter 14-17
 123 Children's Hunter 14-17
 363 THIS Children's Medal

Saturday, Kathryn Hall Hunter Ring 2- 8:00 am

172 Modified Child Hunter
 173 Modified Child Hunter
 177 Modified Adult Hunter
 178 Modified Adult Hunter
 296 Schooling Pony Hunter
 147 Children's Hunter Pony
 148 Children's Hunter Pony
 291 Schooling Hunter 2'
 194 Long Stirrup Hunter
 195 Long Stirrup Hunter
 809 Long Stirrup Hunter Classic
 189 Short Stirrup Hunter Horse
 190 Short Stirrup Hunter Horse
 184 Short Stirrup Hunter Pony
 185 Short Stirrup Hunter Pony
 810 Short Stirrup Hunter Classic
 200 Low Adult Hunter
 201 Low Adult Hunter
 807 Low Adult Hunter Classic
 205 Low Child Hunter Horse
 206 Low Child Hunter Horse
 808 Low Child Hunter Classic
 702 Walk Trot Hunter Opportunity
 705 Walk Trot Equitation Opportunity
 298 Schooling Pony Hunter
 127,132,137 Pony Working Hunter
 128,133,138 Pony Working Hunter Conformation
 142,167 Green Pony Working Hunter
 143,168 Green Pony Working Hunter Conformation

Saturday, Grand Prix Ring- 7:30 am

371 USHJA 3'3" Jumping Seat Medal
 403 0.70m Jumper Table II Sec. 2b
 499 0.70m Child/Adult Jumper Table II Sec. 1
 504 0.80m Jumper Table II Sec. 2b
 413 0.80m Jumper Table II Sec. 1
 418 0.90m Jumper Table II Sec. 2b
 423 0.90m Child/Adult Jumper Table II Sec. 1
 428 1.00m Jumper Table II Sec. 2b
 462 1.00m Child/Adult Jumper Table II Sec. 1
 509 1.00m Take 2 Thoroughbred Jumper Table II Sec. 2b
 455 Pony Jumper 1.05m Table II Sec. 2d
 456 Pony Jumper 1.05m Table II Sec. 1
 433 1.10m Jumper Table II Sec. 2b
 484 1.10m High Children's Jumper Table II Sec. 2b
 488 1.10m High Adult Jumper Table II Sec. 2b
 438 1.15m Jumper Table II Sec. 2b
 472 1.15m Modified Jr./Amateur Table II Sec. 2b
 442 1.20m Jumper Table II Sec. 2b
 475 Low Jr./Amateur Jumper 1.20m Table II Sec. 2b
 447 1.30m Jumper Table II Sec. 2b

SCHEDULE OF EVENTS

Sunday, July 10, 2022**Sunday, Horse Play Hunter Ring 1 - 8:00 am**

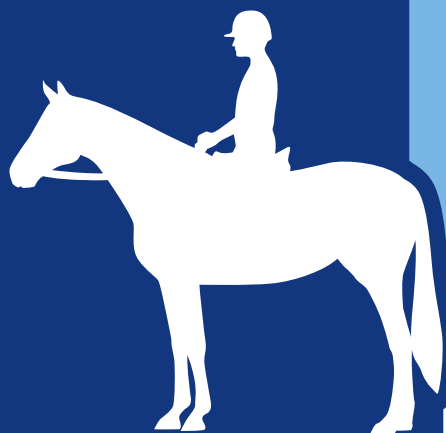
154,240 Amateur Owner Hunter 3'3" Under Saddle
 209,521,516,526 Junior Hunter 3'3" Under Saddle
 155,241 Amateur Owner Hunter 3'3"
 156,242 Amateur Owner Hunter 3'3" Handy
 801 Junior & Amateur Owner Hunter 3'3" Classic
 210,522,517,527 Junior Hunter 3'3"
 211,523,518,528 Junior Hunter 3'3" Handy
 373 NHS 3'3" Medal
 372 USEF/NCEA Junior Hunter Seat Medal
 378 WSHJA Good Seat & Hands Class 3'6"
 76,81 Amateur Owner Hunter Under Saddle
 74,79 Amateur Owner Hunter
 75,80 Amateur Owner Hunter Handy
 800 Junior & Amateur Owner Hunter 3'6" Classic
 101,106,111,116 Junior Hunter Under Saddle
 99,104,109,114 Junior Hunter
 100,105,110,115 Junior Hunter Handy
 800 Junior & Amateur Owner Hunter 3'6" Classic
 86,91,96 Adult Amateur Hunter Under Saddle
 84,89,94 Adult Amateur Hunter
 85,90,95 Adult Amateur Hunter
 805 Adult Amateur Hunter Classic
 374 THIS NHS Adult Medal
 377 WSHJA Good Seat & Hands Class 3'
 121 Children's Hunter 13 & under Under Saddle
 126 Children's Hunter 14-17 Under Saddle
 119 Children's Hunter 13 & under
 120 Children's Hunter 13 & under
 124 Children's Hunter 14-17
 125 Children's Hunter 14-17
 806 Children's Hunter Classic

Sunday, Kathryn Hall Hunter Ring 2 - 8:00 am

174 Modified Child Hunter
 175 Modified Child Hunter
 176 Modified Child Hunter Under Saddle
 179 Modified Adult Hunter
 180 Modified Adult Hunter
 181 Modified Adult Hunter Under Saddle
 324 Long Stirrup Equitation
 325 Long Stirrup Equitation
 321 Short Stirrup Equitation
 322 Short Stirrup Equitation
 326 Long Stirrup Equitation Flat
 323 Short Stirrup Equitation Flat
 336 Low Adult Equitation
 337 Low Adult Equitation
 318 Low Child Equitation
 319 Low Child Equitation
 338 Low Adult Equitation Flat
 320 Low Child Equitation Flat
 703 Walk Trot Hunter Opportunity
 706 Walk Trot Equitation Opportunity
 149 Children's Hunter Pony Under Saddle
 150 Children's Hunter Pony
 151 Children's Hunter Pony
 376 WSHJA Good Seat & Hands Class 2'6"
 129,134,139 Pony Hunter
 130,135,140 Pony Hunter Handy
 804 Pony Hunter Classic
 357 Marshall & Sterling U.S. Pony Medal
 131,136,141 Pony Hunter Under Saddle
 144,169 Green Pony Hunter
 145,170 Green Pony Hunter
 146,171 Green Pony Hunter Under Saddle

Sunday, Grand Prix Ring- 8:00 am

457 Pony Jumper 1.05m Table II Sec. 2b
 458 Pony Jumper 1.05m Table II Sec. 1
 607 \$500 Low Child/Adult Jumper Classic .70m/.80m
 Table II, Sec. 2 (a/b)
 608 \$500 Medium Child/Adult Jumper Classic .90m/1.00m
 Table II, Sec. 2 (a/b)
 606 \$1,000 Child/Adult Jumper Classic
 1.10m Table II, Sec. 2 (a/b)
 603 \$1,500 USHJA Jumper Classic Level 1 1.15m
 Table II, Sec. 2 (a/b)
 700 Hillcrest Training Lead Line Class
 600 \$9,500 USHJA Jumper Classic Level 3
 1.30m Table II Sec. 2a



MAAP

MINOR ATHLETE ABUSE PREVENTION

— REQUIRED OF ALL PARTICIPANTS —

LEARN ABOUT MAAP POLICIES

Read about these and more at
usef.org/MAAPP



SafeSport Training



One-On-One Interactions



Local Travel



Social Media and
Electronic Communications

REPORT VIOLATIONS



usef.org/safe-sport/reporting
859-225-6915



Do you have what it takes to be a World Championship Hunter Rider?



WCHR

WORLD CHAMPIONSHIP HUNTER RIDER

PHOTOS: THE BOOK LLC, SHAWN MCMILLEN, JAMES STUART, JERRY MOHME, JAMES LESLIE PARKER, JAY GOSS

Congratulations to the 2021 WCHR Northwest Regional Winners!

Professional - **Shelley Campf**
Developing Professional - **Rachel Spears**
Amateur Owner 3'6" - **Hilary Sosne**
Amateur Owner 3'3" - **Briteney Mercer**
Adult Amateur - **Jessica King**
Junior 3'6" - **Ella Cate Duke**

Junior 3'3" - **Avery Winston**
Children's - **Adelaide Ellis**
Pony - **Olivia Aul**
Handy Hunter - **Shelley Campf & Alexis Taylor**
Professional Owner - **Aleron LLC**
Developing Pro Owner - **Avery Winston**

JOIN TODAY... and be part of the fun in 2022!

Enroll in the WCHR Program by Midnight Eastern time of the last day of this competition and receive points toward Regional and National awards, and qualifying for the WCHR Finals Challenge classes held during the Capital Challenge Horse Show.

For more information contact

Eva Jackson at ejackson@ushja.org or (859) 225-6735, or visit www.ushja.org/wchr.



PONY RIDERS, EARN MONEY WITH YOUR HORSEMANSHIP SKILLS!

THE EMERSON BURR HORSEMANSHIP GRANT

The Emerson Burr Horsemanship Grant will be awarded to the highest scoring participant of each of these four age groups: 8 and under; 9-11; 12-14; and 15-17. Each winner at the zone level receives a \$100 grant to use towards educational related expenses.

Riders competing in pony classes are eligible to participate in this program. Each participant will take a short, multiple choice test on horsemanship, which contains no more than 20 questions and respond to a short essay question. A winner will be selected from each age group based on the results. Grant information forms received by winners must be returned to USEF by November 15.

The Emerson Burr Grant will also be offered on a National Level during USEF Pony Finals presented by Collecting Gaits Farm. So start sharpening your horsemanship knowledge! Check with the horse show office to see how you can participate!



INDIVIDUAL MEMBERSHIP APPLICATION

UNITED STATES HUNTER JUMPER ASSOCIATION

MEMBER INFORMATION

Name: _____

Address: _____

City: _____

State: _____ Zip: _____

Phone Day: (_____) _____

Phone Evening: (_____) _____

Fax: (_____) _____

E-mail: _____

Website: _____

USEF/USHJA # _____

Date of Birth: _____

Required for Juniors (Under 18 Years of Age) & Amateurs

Are you a member of a state and/or local organization?

☐ Yes ☐ No

If yes, which organization? _____

CHOOSE APPROPRIATE DESIGNATIONS

Category which best describes your participation (check all that apply):

- ☐ Owner ☐ Licensed Official ☐ Rider ☐ Manager
☐ Trainer ☐ Breeder ☐ Secretary

Circle One: **HUNTER** **JUMPER**
Circle One: **JUNIOR** **AMATEUR** **PROFESSIONAL**
(Under 18 as of 12/1/2002)

Signature: _____

Date: _____

(Guardian Signature Required for Juniors Members)

PAYMENT INFORMATION. DO NOT DETACH.

TOTAL AMOUNT ENCLOSED: \$ _____

PLEASE DO NOT SEND CASH

Check # _____

(Make Check Payable to: United States Hunter Jumper Association)

☐ Visa ☐ Master Card ☐ Discover Card ☐ AMEX

Card Number: _____

Exp. Date: ____ / ____ / ____ Billing Zip Code: _____ Card Holder's Name (Print): _____

Card Holder's Signature: _____

MEMBERSHIP TYPES

Active Member

In order to compete as a rider, trainer, owner, or his/her agent(s) at non-breed restricted USEF-licensed competitions in any Hunter, Hunter Breeding, Jumper or Hunter Seat Equitation classes, a person must be an active member of the USHJA or pay a show pass fee to the USHJA. Exceptions: Local competitions and the exceptions in and GR901.9.

Life Member **\$1,500** ☐

3 Year Active Member **\$240** ☐

(Effective 36 months from the start date)

Active Member **\$85** ☐

(Effective 12 months from the start date)

Associate Member

Designed for those individuals who are **not** competing in USEF licensed competitions but want to participate in USHJA educational opportunities and wish to receive all other benefits of a USHJA membership. *Please note: Associate members are subject to a Show Pass Fee of \$30.00 per competition at USEF licensed events.*

Associate Member **\$35** ☐

(Effective 12 months from the start date)

Outreach Member

Designed for those individuals who are participating in USHJA Outreach competitions or are a member of an USHJA Affiliate Organization. *Please note: Outreach members are subject to a Show Pass Fee of \$30.00 per competition at USEF licensed events.*

Outreach Member **FREE** ☐

(Effective 12 months from the start date)

Collegiate Member

Collegiate Members are those alumni riders or coaches participating in IHSA/USHJA competitions. The membership year runs from September 1 to August 31. *Please note: Collegiate members are subject to USHJA show pass fee if competing in USEF licensed competitions.*

Collegiate Alumni **\$15** ☐

(Effective through 8/31/2020)

Collegiate Coach **\$35** ☐

(Effective through 8/31/2020)

SUPPORT THE SPORT

My Donation will help advance the Hunter and Jumper disciplines.

Suggested Donations

☐ \$25.00 ☐ \$50.00 ☐ \$100.00 ☐ Other: _____

TOTAL AMOUNT **\$** _____

Your membership includes a one-year subscription to *USHJA In Stride* magazine (\$9.00).

Mail Application and Payment to:

UNITED STATES HUNTER JUMPER ASSOCIATION • 3870 CIGAR LANE • LEXINGTON, KY 40511 • PHONE: (859) 225-6700 • FAX: (859) 258-9033 • USHJA.ORG

For Questions Email: membership@ushja.org



SAVE *the* DATE

The 2022 OHJA Medal Finals will be held during the
Oregon Summer Classic August 24-28
at Hunter Creek Farm

Don't forget to renew your membership for the
2022 show season at oregonhunterjumper.org!



OREGON
HUNTER JUMPER
ASSOCIATION

TEAM NW

EQUESTRIAN SPORTS

COUNTRY CLASSIC

July 13 - 17, 2022

Entries Close June 15th

Hunter Creek Equestrian Park - Wilsonville, OR

USEF National Rated - USEF Jumper Rated 2

Hunter/Equitation Judge.....Mr. Scott Williamson - *Gate Mills, OH*
Hunter/Equitation Judge.....Ms. Sue Lightner - *Wellington, FL*
Hunter/Equitation Judge.....TBA....

Jumper Judge.....Ms. Mary Von Zimmerman - *Renton, WA*

Course Designer.....Mr. John Manning - *Shelburne Falls, MA*
Course Designer.....Mike Gallaway - *Eugene, OR*

USEF Steward.....Miss Janet Fall- *El Macero, CA*
Licensee.....Country Classic
Show Manager.....Mike Gallaway - *Eugene, OR*
(541) 954-5312

Community Relations & Sponsorship.....Chad Campf - *Aurora, OR*
(503) 970-7375

Show Secretary.....Mollie Gallaway - *Eugene, OR*
(541) 914-0052

Veterinarian.....Lisa Campbell, DVM - *Oregon City, OR*
(971) 269-9207

Farrier.....TBA.... *Will be posted in the show office....*

Photographer.....Grand Pix - *Thermal, CA*
www.grandpixphoto.com

Social Media and Website.....Kindy Poole - *Portland, OR*

Nearest Hospital.....Providence Newberg Medical Center 1001 Providence Dr. Newberg, OR 97132
9.5 miles from the Hunter Creek

Nearest Level I Trauma Center OHSU Hospital 3181 SW Sam Jackson Park Rd, Portland OR 97239
20 miles from the Hunter Creek

Nearest Veterinary Hospital.....OSU Veterinary Hospital 172 Magruder Hall, Corvallis, OR 97331
71.5 miles from Hunter Creek

HUNTERS*class index***COUNTRY CLASSIC****Rated Hunter Sections - Hunter/Equitation Nominating Fee \$50**

<i>DIVISION/CLASS</i>	<i>HEIGHT</i>	<i>CLASS NUMBER</i>	<i>DIVISION FEE</i>	<i>CLASS FEE</i>	<i>PRIZE \$</i>
Young Hunter 2'9" Open to horses 5 years old and younger	2'9"	6, 7, 8, 9, 10	\$200	-	-
Young Hunter 3' Open to horses 6 years old and younger	3'	16, 17, 18, 19, 20	\$200	-	-
Young Hunter 3'3" Open to horses 7 years old and younger	3'3"	212, 213, 214, 215, 216	\$200	-	-
Green Hunter 3'	3'	21, 22, 23, 24, 25	\$275	-	\$350
Green Hunter 3'3"	3'3"	26, 27, 28, 29, 30	\$275	-	\$350
Green Hunter 3'6"	3'6"	46, 47, 48, 49, 50	\$275	-	\$750
Green Hunter 3'9"	3'9"	51, 52, 53, 54, 55	\$275	-	\$750
Conformation Hunter Model	-	56	-	\$35	-
Conformation Hunter	3'6"/3'9"	57, 58, 59, 60, 61	\$275	-	\$750
Performance Hunter 3'3'	3'3"	41, 42, 43, 44, 45	\$275	\$55	\$750
Performance Hunter 3'6'	3'6"	67, 68, 69, 70, 71	\$275	\$55	\$750
High Performance Hunter	3'9"	62, 63, 64, 65, 66	\$300	\$70	\$1,000
Amateur Owner Hunter 18-35	3'6"	72, 73, 74, 75, 76	\$275	-	\$500
Amateur Owner Hunter 36 & Over	3'6"	77, 78, 79, 80, 81	\$275	-	\$500
Amateur Owner Hunter 3'3" 18-35	3'3"	152, 153, 154, 155, 156	\$275	-	\$500
Amateur Owner Hunter 3'3" 36 & Over	3'3"	238, 239, 240, 241, 242	\$275	-	\$500
Small Junior Hunter 15 & Under	3'6"	97, 98, 99, 100, 101	\$275	-	\$500
Small Junior Hunter 16-17	3'6"	102, 103, 104, 105, 106	\$275	-	\$500
Large Junior Hunter 15 & Under	3'6"	107, 108, 109, 110, 111	\$275	-	\$500
Large Junior Hunter 16-17	3'6"	112, 113, 114, 115, 116	\$275	-	\$500
Junior Hunter 3'3" Small 15 & Under	3'3"	207, 208, 209, 210, 211	\$275	-	\$500
Junior Hunter 3'3" Large 15 & Under	3'3"	514, 515, 516, 517, 518	\$275	-	\$500
Junior Hunter 3'3" Small 16-17	3'3"	519, 520, 521, 522, 523	\$275	-	\$500
Junior Hunter 3'3" Large 16-17	3'3"	524, 525, 526, 527, 528	\$275	-	\$500
Small Pony Hunter	2'3"	127, 128, 129, 130, 131	\$250	-	\$400
Medium Pony Hunter	2'6"	132, 133, 134, 135, 136	\$250	-	\$400
Large Pony Hunter	3'	137, 138, 139, 140, 141	\$250	-	\$400
Small/Medium Green Pony	2'3"-2'6"	142, 143, 144, 145, 146	\$250	-	\$250
Large Green Pony Hunter	2'9"	167, 168, 169, 170, 171	\$250	-	\$250

C-Rated Hunter Sections - Hunter/Equitation Nominating Fee \$50

DIVISION/CLASS	HEIGHT	CLASS NUMBER	DIVISION FEE	CLASS FEE	PRIZE \$
TAKE2 Thoroughbred Hunter Open to Jockey Club registered Thoroughbreds.	3'	228, 229, 230, 231, 232	\$220	\$55	-
Small Hunter Open to horses over 14.2 but not over 16.0 hands.	3'	31, 32, 33, 34, 35	\$220	\$55	-
Adult Hunter 18-39	3'	82, 83, 84, 85, 86	\$220	\$55	-
Adult Hunter 40-55	3'	87, 88, 89, 90, 91	\$220	\$55	-
Adult Hunter 56 & Over	3'	92, 93, 94, 95, 96	\$220	\$55	-
Children's Hunter 13 & Under	3'	117, 118, 119, 120, 121	\$220	\$55	-
Children's Hunter 14-17	3'	122, 123, 124, 125, 126	\$220	\$55	-
Children's Hunter Pony	2'/2'3"/2'6"	147, 148, 149, 150, 151	\$220	\$55	-
USHJA 2' Hunter	2'	233, 234, 235, 236, 237	\$220	\$55	-
USHJA 2'3" Hunter	2'3"	243, 244, 245, 246, 247	\$220	\$55	-
USHJA 2'6" Hunter	2'6"	11, 12, 13, 14, 15	\$220	\$55	-
USHJA 2'9" Hunter	2'9"	248, 249, 250, 251, 252	\$220	\$55	-
USHJA 3' Hunter	3'	253, 254, 255, 256, 257	\$220	\$55	-

Non-Rated Hunter Sections - Hunter/Equitation Nominating Fee \$50

DIVISION/CLASS	HEIGHT	CLASS NUMBER	DIVISION FEE	CLASS FEE
Schooling Hunter Open to all hunters and ponies. See schedule for fence heights.	-	276, 287, 289, 290, 291, 294	-	\$55
Baby Green Hunter Open to a horse of any age in its first year of showing.	2'6"	1, 2, 3, 4, 5	\$220	\$55
Large Hunter Open to horse 16.0 hands and over. Fences 3'.	3'	36, 37, 38, 39, 40	\$220	\$55
Short Stirrup Hunter Pony Open to any pony and junior rider. Rider may not cross enter into any hunter class with fences above 2'3". May be combined with short Stirrup Horse. Respective heights.	18"	182, 183, 184, 185, 186	\$220	\$55
Short Stirrup Hunter Horse Open to any horse and junior rider. Rider may not cross enter into any hunter class with fences at 2'9" or higher.	2'-2'3"	187, 188, 189, 190, 191	\$220	\$55
Long Stirrup Hunter Open to any horse and amateur rider. Rider may not cross enter into any hunter class with fences at 2'9" or higher.	2'-2'3"	192, 193, 194, 195, 196	\$220	\$55
Modified Child Hunter Open to any horse and junior rider. Rider may not cross enter into any class with fences exceeding 3'.	2'9"	172, 173, 174, 175, 176	\$220	\$55
Modified Adult Hunter Open to any horse and amateur rider. Rider may not cross enter into any class with fences exceeding 3'.	2'9"	177, 178, 179, 180, 181	\$220	\$55
Low Children's Hunter Open to junior Riders. ZONE SPECIFICATIONS will be followed	2'6"	202, 203, 204, 205, 206	\$220	\$55
Low Adult Hunter Open to amateur riders. ZONE SPECIFICATIONS will be followed	2'6"	197, 198, 199, 200, 201	\$220	\$55

Opportunity Sections

DIVISION/CLASS	HEIGHT	CLASS NUMBER	DIVISION FEE	CLASS FEE
Walk Trot Hunter Opportunity	-	701,702,703	-	\$30
Walk Trot Equitation Opportunity	-	704,705,706	-	\$30

EQUITATION*class index***Equitation Sections - Hunter/Equitation Nominating Fee \$50**

DIVISION/CLASS	HEIGHT	CLASS NUMBER	DIVISION FEE	CLASS FEE
Equitation 11 & Under No cross entry into Restricted Equitation	3'	312, 313, 314	\$150	\$55
Equitation 12-14 No cross entry into Restricted Equitation	3'	300, 301, 302	\$150	\$55
Equitation 15 - 17 No cross entry into Restricted Equitation	3'	309, 310, 311	\$150	\$55
Adult Equitation 18-39	3'	330, 331, 332	\$150	\$55
Adult Equitation 40-55	3'	327, 328, 329	\$150	\$55
Adult Equitation 56 & Over	3'	333, 334, 335	\$150	\$55
Pony Equitation	2'3", 2'6", 2'9"	315, 316, 317	\$150	\$55
Restricted Equitation 13 & Under Open to junior riders. Rider may not cross enter into any class with fences exceeding 3'3".	3'	303, 304, 305	\$150	\$55
Restricted Equitation 14 - 17 Open to junior riders. Rider may not cross enter into any class with fences exceeding 3'3".	3'	306, 307, 308	\$150	\$55
Modified Child/Adult Equitation Riders may not cross enter into any class exceeding 3'.	2'9"	379, 380, 381	\$150	\$55
Low Adult Equitation Open to amateur riders. Riders may not cross enter into any class exceeding 2'9".	2'6"	336, 337, 338	\$150	\$55
Low Child Equitation Open to junior riders. Riders may not cross enter into any class exceeding 2'9".	2'6"	318, 319, 320	\$150	\$55
Long Stirrup Equitation Open to any amateur rider. Riders may not cross enter into any class with fences exceeding 2'6".	2'3"	324, 325, 326	\$150	\$55
Short Stirrup Equitation Open to any junior rider. Riders may not cross enter into any class with fences exceeding 2'6".	2'3"	321, 322, 323	\$150	\$55
Children's Pony Equitation Open to any pony and junior rider. Rider may not cross enter any equitation class with fences at 3' or higher.	2', 2'3", 2'6"	162, 163, 164	\$150	\$55

Medal Section - Hunter/Equitation Nominating Fee \$50

CLASS	HEIGHT	CLASS NUMBER	CLASS FEE
Hamel Foundation NHS 3'3" Medal	3'3"	373	\$55
Dover Saddlery/USEF Hunter Seat Medal	3'6"	350	\$55
ASPCA Horsemanship Class	3'6"	351	\$55
WIHS Equitation Classic Hunter Phase	3'6"	353	\$55
WIHS Equitation Classic Jumper Phase	3'6"	354	\$55
WIHS Equitation Classic Combined	-	355	-
OHJA Foundation Medal	2'3"	165	\$55
OHJA Mini Medal	2'6"	358	\$55
OHJA Children's Medal	3'	359	\$55
OHJA Adult Medal	3'	360	\$55
OHJA Junior/Senior Medal 3'3"	3'3"	361	\$55
OHJA Junior/Senior Medal	3'6"	362	\$55
THIS Children's Medal	3'	363	\$55
THIS NHS Adult Medal	3'	374	\$55
Ariat National Adult Medal	3'	364	\$55
USEF Adult Medal	3'3"	356	\$55
Marshall & Sterling U.S. Pony Medal	2'3/2'6"/3'	357	\$55
EMO Insurance/USHJA Jumping Seat Medal 3'3"	3'3"	371	\$55
USHJA Hunter Seat Medal 3'3"	3'3"	375	\$55
Platinum Performance/USEF Talent Search 1*	3'9"	352	\$55
USEF/NCEA Junior Hunter Seat Medal	3'3"	372	\$55
WSHJA Good Seat & Hands Class 2'6"	2'6"	376	\$55
WSHJA Good Seat & Hands Class 3'	3'	377	\$55
WSHJA Good Seat & Hands Class 3'6"	3'6"	378	\$55

Nominated Jumper Sections - High Jumper Nomination Fee \$150

<i>DIVISION/CLASS</i>	<i>HEIGHT</i>	<i>CLASS NUMBER</i>	<i>CLASS FEE</i>	<i>PRIZE \$</i>
Low Junior/Amateur Jumper	1.25m	473, 474, 475	\$60	\$600
1.20m Jumper	1.20m	440, 441, 442, 443	\$60	\$800
1.30m Jumper	1.30m	445, 446, 447	\$65	\$750

Jumper Sections - Low Jumper Nomination Fee \$50

<i>DIVISION/CLASS</i>	<i>HEIGHT</i>	<i>CLASS NUMBER</i>	<i>CLASS FEE</i>
0.70m Jumper	0.70m	400, 401, 402, 403	\$55
0.70m Children's/Adult Jumper	0.70m	496, 497, 498, 499	\$55
0.80m Jumper	0.80m	501, 502, 503, 504	\$55
0.80m Children's/Adult Jumper	0.80m	410, 411, 412, 413	\$55
0.90m Jumper	0.90m	415, 416, 417, 418	\$55
0.90m Low Children's/Adult Jumper	0.90m	420, 421, 422, 423	\$55
1.00m Jumper	1.00m	425, 426, 427, 428	\$55
1.00m Low Children's/Adult Jumper	1.00m	459, 460, 461, 462	\$55
Take2 Thoroughbred Jumper	1.00m	506, 507, 508, 509	\$55
1.10m Jumper	1.10m	430, 431, 432, 433	\$55
High Children's Jumper	1.10m	481, 482, 483, 484	\$55
High Adult Jumper	1.10m	485, 486, 487, 488	\$55
1.15m Jumper	1.15m	435, 436, 437, 438	\$55
Modified Junior/Amateur Jumper	1.15m	469, 470, 471, 472	\$55
Pony Jumper	1.05m	455, 456, 457, 458	\$55

SPECIAL CLASSES*class index***Special Classes**

CLASS	HEIGHT	CLASS NUMBER	CLASS FEE	POST ENTRY FEE
\$1,000 Child/Adult Jumper Classic Horses must have entered and shown in at least one class in the Children's or Adult Jumper sections.	1.10m	606	\$100	\$25
\$1,500 USHJA Jumper Classic Level 1 All horses are eligible.	1.15m	603	\$150	\$25
\$9,500 USHJA Jumper Classic Level 3 All horses are eligible.	1.30m	600	\$350	\$50
\$500 Low Child/Adult Jumper Classic Horses must have shown in at least one class in the Child or Adult Jumper sections. Prize money to six places and ribbons to eight. No horse-rider combination cross entry between 1.15M Classic and Low Child/Adult Classic. This class will be held at two separate heights. Declare upon entry which height you will be competing at.	0.70m - 0.80m	607	\$75	\$25
\$500 Medium Child/Adult Jumper Classic Same specifications as class 607	0.90m or 1.0m	608	\$75	\$25
\$10,000 Team NW International Hunter Derby. Open to all horses. Cross entry into USHJA National Hunter Derby PERMITTED	3'6"-4'	622	\$350	\$50
\$2,500 USHJA National Hunter Derby	3'-3'5"	621	\$200	\$25
\$1,000 Hillcrest Training Local Hunter Derby	2'6"	624	\$100	\$25
\$1,000 Platinum Performance USHJA Green Hunter Incentive Will run concurrently with last class of respective section.	3'/3'3"	625	\$100	\$25
\$1,000 Platinum Performance USHJA Green Hunter Incentive Will run concurrently with last class of respective section.	3'6"/3'9"	627	\$100	\$25
Hillcrest Training Lead Line	-	700	Free	Free

Hunter Classics - If fewer than 10 entries, classics may be combined at managers discretion.

CLASS	HEIGHT	CLASS NUMBER	CLASS FEE	POST ENTRY FEE
\$1,000 Junior & Amateur Owner 3'6" Classic Designated first-round class. Horse must have entered, shown, and completed the course in two Jr or AO Hunter classes over fences at the same show. Classic will be split if more than 10 entrants in each division.	3'6"	800	\$100	\$25
\$1,000 Junior & Amateur Owner 3'3" Classic Designated first-round class. Horse must have entered, shown, and completed the course in two Jr or AO Hunter classes over fences at the same show. Classic will be split if more than 10 entrants in each division.	3'3"	801	\$100	\$25
\$500 Pony Hunter Classic Designated first-round class. Ponies must have entered, shown, and completed the course in two Pony Hunter classes over fences at the same show.	2'3", 2'6", 2'9"	804	\$55	\$25
\$500 Adult Amateur Hunter Classic Designated first-round class. Horse must have entered, shown, and completed the course in two Adult Hunter classes over fences at the same show.	3'	805	\$55	\$25
\$500 Children's Hunter Classic Designated first-round class. Horse/ponies must have entered, shown, and completed the course in two Children's Hunter classes over fences at the same show.	3'	806	\$55	\$25
\$500 Low Adult Hunter Classic Designated first-round class. Horse/ponies must have entered, shown, and completed the course in two Pre-Adult Hunter classes over fences at the same show.	2'6"	807	\$55	\$25
\$500 Low Child Hunter Classic Designated first-round class. Horse/ponies must have entered, shown, and completed the course in two Pre-Child Hunter classes over fences at the same show.	2'6"	808	\$55	\$25
\$500 Long Stirrup Hunter Classic Designated first-round class. Horse/ponies must have entered, shown, and completed the course in two Long Stirrup Hunter classes over fences at the same show.	2'3"	809	\$55	\$25
\$500 Short Stirrup Classic Designated first-round class. Horse/ponies must have entered, shown, and completed the course in two Short Stirrup Hunter classes over fences at the same show.	2'3"	810	\$55	\$25



Completely Devoucoux®

It's difficult not to be, with choices like Biarritz, Chiberta, Makila, Korrika and Lagun! Devoucoux are saddlers heart and soul, constantly creating, and know instinctively how to give full rein to each discipline. They are mindful of the environment, with their innovative pure vegetal-tanned leather, and of constantly improving performance, with exciting new lines like Sport and Lab.

Creating your saddle remains Devoucoux's passion so that riding can remain your finest conquest.



www.devoucoux.com

TEAM NW

EQUESTRIAN SPORTS

CHAMPIONSHIPS OFFERED IN THE FOLLOWING DIVISIONS:

Young Hunter, Green Hunter, Conformation Hunter, Performance Hunter 3'3',
Performance Hunter 3'6', High Performance Hunter, Amateur Owner Hunter,
Amateur Owner Hunter 3'3", Junior Hunter, Junior Hunter 3'3", Pony Hunter,
Green Pony Hunter, TAKE2 Thoroughbred Hunter, Adult Hunter, Children's Hunter,
Children's Hunter Pony, Baby Green Hunter, Small Hunter, Large Hunter,
Modified Child/Adult Hunter, Low Child Hunter, Low Adult Hunter, Short Stirrup Hunter,
Short Stirrup Hunter Pony, Long Stirrup Hunter, USHJA Hunter

Equitation 11 & Under, Equitation 12-14, Equitation 15-17, Adult Equitation,
Restricted Equitation, Low Adult Equitation, Low Child Equitation, Long Stirrup Equitation,
Short Stirrup Equitation, Children's Pony Equitation

0.70m Jumper, 0.70m Child/Adult Jumper, 0.80m Jumper, 0.80m Child/Adult Jumper, 0.90m
Jumper, 0.90m Child/Adult Jumper, 1.00m Jumper, 1.00m Low Child/Adult Jumper, 1.10m
Jumper, 1.15m Jumper, 1.20m Jumper, 1.30m Jumper, High Children's Jumper, High Adult
Jumper, Modified Junior/Amateur Jumper, Junior/Amateur Jumper,

SCHEDULE OF EVENTS

Tuesday, July 12, 2022 - Schooling Rounds**Derby Ring**

3'3" - 9:00-1:00

3' - 1:00-4:00

Grand Prix Ring

1.10m - 9:00-11:00

1.00m - 11:00-3:00

.85m - 3:00-4:30

Hunter Ring 1

3' - 9:00-12:00

2'6" - 12:00-3:00

2' - 3:00-5:00

Hunter Ring 2

2' - 9:00-12:00

2'6" - 12:00-5:00

Wednesday, July 13, 2022**Wednesday, Aleron Derby Ring-7:45 am**

56 Conformation Model

46 Green Hunter 3'6"

47 Green Hunter 3'6" Handy

57 Conformation Hunter

58 Conformation Hunter Handy

51 Green Hunter 3'9"

52 Green Hunter 3'9" Handy

62 High Performance Hunter

63 High Performance Hunter Handy

53 Green Hunter 3'9" Under Saddle

64 High Performance Hunter Under Saddle

67 Performance Hunter 3'6"

68 Performance Hunter 3'6" Handy

41 Performance Hunter 3'3"

42 Performance Hunter 3'3" Handy

Wednesday, Horse Play Hunter Ring 1- 8:00 am

248 USHJA 2'9" Hunter

249 USHJA 2'9" Hunter

6 Young Hunter 2'9"

7 Young Hunter 2'9"

253 USHJA 3' Hunter

254 USHJA 3' Hunter

21 Green Hunter 3'

22 Green Hunter 3'

16 Young Hunter 3'

17 Young Hunter 3'

255 USHJA 3' Hunter Under Saddle

23 Green Hunter 3' Under Saddle

18 Young Hunter 3' Under Saddle

26 Green Hunter 3'3"

27 Green Hunter 3'3"

212 Young Hunter 3'3"

213 Young Hunter 3'3"

28 Green Hunter 3'3" Under Saddle

216 Young Hunter 3'3" Under Saddle

31 Small Hunter

32 Small Hunter

36 Large Hunter

37 Large Hunter

228 TAKE2 Thoroughbred Hunter

229 TAKE2 Thoroughbred Hunter

Wednesday, Kathryn A Hall PC Ring 2- 8:00 am

233 USHJA 2' Hunter

234 USHJA 2' Hunter

243 USHJA 2'3" Hunter

244 USHJA 2'3" Hunter

11 USHJA 2'6" Hunter

12 USHJA 2'6" Hunter

1 Baby Green Hunter

2 Baby Green Hunter

13 USHJA 2'6" Hunter Under Saddle

3 Baby Green Hunter Under Saddle

Wednesday, Grand Prix Ring-8:00 am

400 0.70m Jumper Table II Sec. 2b

496 0.70m Child/Adult Jumper Table II Sec. 1

501 0.80m Jumper Table II Sec. 2b

410 0.80m Jumper Table II Sec. 1

415 0.90m Jumper Table II Sec. 2b

420 0.90m Child/Adult Jumper Table II Sec. 1

425 1.00m Jumper Table II Sec. 2b

459 1.00m Child/Adult Jumper Table II Sec. 1

506 1.00m Take 2 Thoroughbred Jumper Table II Sec. 2b

430 1.10m Jumper Table II Sec. 2b

481 1.10m High Children's Jumper Table II Sec. 2b

485 1.10m High Adult Jumper Table II Sec. 2b

435 1.15m Jumper Table II Sec. 2b

469 1.15m Modified Jr./Amateur Table II Sec. 2b

440 1.20m Jumper Table II Sec. 2b

445 1.30m Jumper Table II Sec. 2b

Thursday, July 14, 2022**Thursday, Aleron Derby Ring-8:00 am**

48 Green Hunter 3'6"

49 Green Hunter 3'6" *USHJA Green Incentive Overlay

59 Conformation Hunter

60 Conformation Hunter

*USHJA Green Incentive Overlay

50 Green Hunter 3'6" Under Saddle

61 Green Conformation Hunter Under Saddle

54 Green Hunter 3'9"

55 Green Hunter 3'9" *USHJA Green Incentive Overlay

65 High Performance Hunter

66 High Performance Hunter

70 Performance Hunter 3'6"

71 Performance Hunter 3'6"

69 Performance Hunter 3'6" Under Saddle

44 Performance Hunter 3'3"

45 Performance Hunter 3'3"

43 Performance Hunter 3'3" Under Saddle

276 Schooling 3'/3'3"

24 Green Hunter 3'

25 Green Hunter 3' *USHJA Green Incentive Overlay

29 Green Hunter 3'3"

30 Green Hunter 3'3" *USHJA Green Incentive Overlay

Thursday, Horse Play Hunter Ring 1- 8:00 am

250 USHJA 2'9" Hunter

251 USHJA 2'9" Hunter

9 Young Hunter 2'9"

10 Young Hunter 2'9"

252 USHJA 2'9" Hunter Under Saddle

8 Young Hunter 2'9" Under Saddle

256 USHJA 3' Hunter

257 USHJA 3' Hunter

19 Young Hunter 3'

20 Young Hunter 3'

214 Young Hunter 3'3"

215 Young Hunter 3'3"

33 Small Hunter

34 Small Hunter

38 Large Hunter

39 Large Hunter

SCHEDULE OF EVENTS

230 TAKE2 Thoroughbred Hunter
231 TAKE2 Thoroughbred Hunter
35 Small Hunter Under Saddle
40 Large Hunter Under Saddle
232 TAKE2 Thoroughbred Hunter Under Saddle

Thursday, Kathryn A Hall PC Ring 2- 8:00 am

235 USHJA 2' Hunter Under Saddle
236 USHJA 2' Hunter
237 USHJA 2' Hunter
245 USHJA 2'3" Hunter Under Saddle
246 USHJA 2'3" Hunter
247 USHJA 2'3" Hunter
14 USHJA 2'6" Hunter
15 USHJA 2'6" Hunter
4 Baby Green Hunter
5 Baby Green Hunter

Thursday, Grand Prix Ring- 8:00 am

436 1.15m Jumper Table II Sec. 2b
470 1.15m Modified Jr./Amateur Table II Sec. 2b
441 1.20m Jumper Table II Sec. 2b
473 Low Jr./Amateur Jumper 1.20m Table II Sec. 2b
446 1.30m Jumper Table II Sec. 2b
431 1.10m Jumper Table II Sec. 2b
482 1.10m High Children's Jumper Table II Sec. 2b
486 1.10m High Adult Jumper Table II Sec. 2b
426 1.00m Jumper Table II Sec. 2b
460 1.00m Child/Adult Jumper Table II Sec. 1
507 1.00m Take 2 Thoroughbred Jumper Table II Sec. 2b
416 0.90m Jumper Table II Sec. 2b
421 0.90m Child/Adult Jumper Table II Sec. 1
502 0.80m Jumper Table II Sec. 2b
411 0.80m Jumper Table II Sec. 1
401 0.70m Jumper Table II Sec. 2b
497 0.70m Child/Adult Jumper Table II Sec. 1

Friday, July 15, 2022

Friday, Aleron Derby Ring - 8:00 am

309 Equitation 15-17
310 Equitation 15-17
311 Equitation 15-17 Flat
300 Equitation 12-14
301 Equitation 12-14
302 Equitation 12-14 Flat
312 Equitation 11 & Under
313 Equitation 11 & Under
314 Equitation 11 & Under Flat
361 OHJA Jr./Sr. 3'3" Medal
362 OHJA Jr./Sr. Medal
350 Dover Saddlery/USEF Hunter Seat Medal
353 WIHS Equitation Classic (Hunter Phase)
— Break —
621 \$2,500 USHJA National Hunter Derby
624 Hillcrest Training Local Hunter Derby

Friday, Horse Play Hunter Ring 1- 8:00 am

294 Schooling 3'
330, 327, 333 Adult Equitation
331, 328, 334 Adult Equitation
332 Adult Equitation 18-39 Flat
329 Adult Equitation 40-55 Flat
335 Adult Equitation 56 & Over Flat
360 OHJA Adult Medal
292 Schooling 3'
303 Restricted Equitation 13 & under

304 Restricted Equitation 13 & under
305 Restricted Equitation 13 & under Flat
306 Restricted Equitation 14-17
307 Restricted Equitation 14-17
308 Restricted Equitation 14-17 Flat
359 OHJA Children's Medal
379 Modified Child/Adult Equitation
380 Modified Child/Adult Equitation
381 Modified Child/Adult Equitation Flat
293 Schooling Pony Hunter
315 Pony Equitation Over Fences
316 Pony Equitation Over Fences
317 Pony Equitation Flat

Friday Kathryn A Hall PC Ring 2- 8:00 am

290 Schooling Hunter 2'
187 Short Stirrup Hunter Horse
188 Short Stirrup Hunter Horse
191 Short Stirrup Hunter Horse Undersaddle
182 Short Stirrup Hunter Pony
183 Short Stirrup Hunter Pony
186 Short Stirrup Hunter Pony Undersaddle
192 Long Stirrup Hunter
193 Long Stirrup Hunter
196 Long Stirrup Hunter Undersaddle
289 Schooling Hunter 2'6"
197 Low Adult Hunter
198 Low Adult Hunter
202 Low Child Hunter Horse
203 Low Child Hunter Horse
199 Low Adult Hunter Under Saddle
204 Low Child Hunter Horse Under Saddle
358 OHJA Mini Medal
701 Walk Trot Hunter Opportunity
704 Walk Trot Equitation Opportunity
162 Children's Pony Equitation
163 Children's Pony Equitation
164 Children's Pony Equitation Flat
165 OHJA Foundation Medal

Friday, Grand Prix Ring- 7:30 am

371 USHJA 3'3" Jumping Seat Medal
402 0.70m Jumper Table II Sec. 2b
498 0.70m Child/Adult Jumper Table II Sec. 1
503 0.80m Jumper Table II Sec. 2b
412 0.80m Jumper Table II Sec. 1
417 0.90m Jumper Table II Sec. 2b
422 0.90m Child/Adult Jumper Table II Sec. 1
427 1.00m Jumper Table II Sec. 2b
461 1.00m Child/Adult Jumper Table II Sec. 1
508 1.00m Take 2 Thoroughbred Jumper Table II Sec. 2b
432 1.10m Jumper Table II Sec. 2b
483 1.10m High Children's Jumper Table II Sec. 2b
487 1.10m High Adult Jumper Table II Sec. 2b
437 1.15m Jumper Table II Sec. 2b
471 1.15m Modified Jr./Amateur Table II Sec. 2b
442 1.20m Jumper Table II Sec. 2b
474 Low Jr./Amateur Jumper 1.20m Table II Sec. 2b
447 1.30m Jumper Table II Sec. 2b

SCHEDULE OF EVENTS

Saturday, July 16, 2022**Saturday, Aleron Derby Ring- 8:00 am**

622 Team NW International Hunter Derby
 152,238 Amateur Owner Hunter 3'3"
 153,239 Amateur Owner Hunter 3'3"
 207,519,514,524 Junior Hunter 3'3"
 208,520,515,525 Junior Hunter 3'3"
 375 USHJA Hunter Seat Medal
 286 Schooling Hunter 3'6"
 72,77 Amateur Owner Hunter
 73,78 Amateur Owner Hunter
 97,102,107,112 Junior Hunter
 98,103,108,113 Junior Hunter
 351 ASPCA Maclay Horsemanship Class
 287 Schooling Hunter 3'
 82,87,92 Adult Amateur Hunter
 83,88,93 Adult Amateur Hunter
 356 USEF Adult Medal
 364 Ariat Adult Medal
 295 Schooling 3'
 117 Children's Hunter 13 & under
 118 Children's Hunter 13 & under
 122 Children's Hunter 14-17
 123 Children's Hunter 14-17
 363 THIS Children's Medal

Saturday, Horse Play Hunter Ring 1- 8:00 am

172 Modified Child Hunter
 173 Modified Child Hunter
 177 Modified Adult Hunter
 178 Modified Adult Hunter
 296 Schooling Pony Hunter
 147 Children's Hunter Pony
 148 Children's Hunter Pony
 291 Schooling Hunter 2'
 194 Long Stirrup Hunter
 195 Long Stirrup Hunter
 809 Long Stirrup Hunter Classic
 189 Short Stirrup Hunter Horse
 190 Short Stirrup Hunter Horse
 184 Short Stirrup Hunter Pony
 185 Short Stirrup Hunter Pony
 810 Short Stirrup Hunter Classic
 200 Low Adult Hunter
 201 Low Adult Hunter
 807 Low Adult Hunter Classic
 205 Low Child Hunter Horse
 206 Low Child Hunter Horse
 808 Low Child Hunter Classic
 298 Schooling Pony Hunter
 127,132,137 Pony Working Hunter
 128,133,138 Pony Working Hunter Conformation
 142,167 Green Pony Working Hunter
 143,168 Green Pony Working Hunter Conformation
 702 Walk Trot Hunter Opportunity
 705 Walk Trot Equitation Opportunity

Saturday, Grand Prix Ring- 7:30 am

354 WIHS Equitation Classic Jumper Phase
 352 Platinum Performance/USEF Talent Search 1*
 403 0.70m Jumper Table II Sec. 2b
 499 0.70m Child/Adult Jumper Table II Sec. 1
 504 0.80m Jumper Table II Sec. 2b
 413 0.80m Jumper Table II Sec. 1
 418 0.90m Jumper Table II Sec. 2b
 423 0.90m Child/Adult Jumper Table II Sec. 1
 428 1.00m Jumper Table II Sec. 2b
 462 1.00m Child/Adult Jumper Table II Sec. 1
 509 1.00m Take 2 Thoroughbred Jumper Table II Sec. 2b
 433 1.10m Jumper Table II Sec. 2b
 484 1.10m High Children's Jumper Table II Sec. 1
 488 1.10m High Adult Jumper Table II Sec. 1
 455 Pony Jumper 1.05m Table II Sec. 2d
 456 Pony Jumper 1.05m Table II Sec. 1

438 1.15m Jumper Table II Sec. 2b
 472 1.15m Modified Jr./Amateur Table II Sec. 2b
 443 1.20m Jumper Table II Sec. 2b
 475 Low Jr./Amateur Jumper 1.20m Table II Sec. 2b

Sunday, July 17, 2022**Sunday, Aleron Derby Ring- 8:00 am**

154,240 Amateur Owner Hunter 3'3" Under Saddle
 209,521,516,526 Junior Hunter 3'3" Under Saddle
 155,241 Amateur Owner Hunter 3'3"
 156,242 Amateur Owner Hunter 3'3" Handy
 801 Junior & Amateur Owner Hunter 3'3" Classic
 210,522,517,527 Junior Hunter 3'3"
 211,523,518,528 Junior Hunter 3'3" Handy
 373 NHS 3'3" Medal
 372 USEF/NCEA Junior Hunter Seat Medal
 378 WSHJA Good Seat & Hands Class 3'6"
 76,81 Amateur Owner Hunter Under Saddle
 74,79 Amateur Owner Hunter
 75,80 Amateur Owner Hunter Handy
 800 Junior & Amateur Owner Hunter 3'6" Classic
 101,106,111,116 Junior Hunter Under Saddle
 99,104,109,114 Junior Hunter
 100,105,110,115 Junior Hunter Handy
 800 Junior & Amateur Owner Hunter 3'6" Classic
 86,91,96 Adult Amateur Hunter Under Saddle
 84,89,94 Adult Amateur Hunter
 85,90,95 Adult Amateur Hunter
 805 Adult Amateur Hunter Classic
 374 THIS NHS Adult Medal
 377 WSHJA Good Seat & Hands Class 3'
 121 Children's Hunter 13 & under Under Saddle
 126 Children's Hunter 14-17 Under Saddle
 119 Children's Hunter 13 & under
 120 Children's Hunter 13 & under
 124 Children's Hunter 14-17
 125 Children's Hunter 14-17
 806 Children's Hunter Classic

Sunday, Horse Play Hunter Ring 1- 8:00 am

174 Modified Child Hunter
 175 Modified Child Hunter
 176 Modified Child Hunter Under Saddle
 179 Modified Adult Hunter
 180 Modified Adult Hunter
 181 Modified Adult Hunter Under Saddle
 324 Long Stirrup Equitation
 325 Long Stirrup Equitation
 321 Short Stirrup Equitation
 322 Short Stirrup Equitation
 326 Long Stirrup Equitation Flat
 323 Short Stirrup Equitation Flat
 336 Low Adult Equitation
 337 Low Adult Equitation
 318 Low Child Equitation
 319 Low Child Equitation
 338 Low Adult Equitation Flat
 320 Low Child Equitation Flat
 703 Walk Trot Hunter Opportunity
 706 Walk Trot Equitation Opportunity
 149 Children's Hunter Pony Under Saddle
 150 Children's Hunter Pony
 151 Children's Hunter Pony
 376 WSHJA Good Seat & Hands Class 2'6"
 129,134,139 Pony Hunter
 130,135,140 Pony Hunter Handy
 804 Pony Hunter Classic
 357 Marshall & Sterling U.S. Pony Medal
 131,136,141 Pony Hunter Under Saddle
 144,169 Green Pony Hunter
 145,170 Green Pony Hunter
 146,171 Green Pony Hunter Under Saddle

SCHEDULE OF EVENTS

Sunday, Grand Prix Ring- 8:00 am

457 Pony Jumper 1.05m Table II Sec. 2b

458 Pony Jumper 1.05m Table II Sec. 1

607 \$500 Low Child/Adult Jumper Classic .70m/.80m
Table II, Sec. 2 (a/b)

608 \$500 Medium Child/Adult Jumper Classic .90m/1.00m
Table II, Sec. 2 (a/b)

606 \$1,000 Child/Adult Jumper Classic
1.10m Table II, Sec. 2 (a/b)

603 \$1,500 USHJA Jumper Classic Level 1 1.15m
Table II, Sec. 2 (a/b)

700 Hillcrest Training Lead Line Class

600 \$9,500 USHJA Jumper Classic Level 3
1.30m Table II Sec. 2a

COUNTRY CLASSIC

The DIBBINS FOX CUP SPORTSMANSHIP AWARD

THIS AWARD IS GIVEN IN REMEMBRANCE OF
CYNTHIA HOYT DIBBINS
LIFETIME EQUESTRIAN, TEACHER AND STUDENT



The DIBBINS FOX CUP WILL BE AWARDED
SUNDAY OF COUNTRY CLASSIC AND
NORTHWEST SPECTACULAR.
A TROPHY AND A ONE YEAR SUBSCRIPTION
TO PRACTICAL HORSEMAN MAGAZINE WILL
BE GIVEN TO ALL WINNERS.



Best of luck

to all the competitors at the
Team NW Summer Series!

Use promo code
TEAMNW
to save 20% off your
order of \$50 or more at
horseplaybend.com*

HORSEPLAY

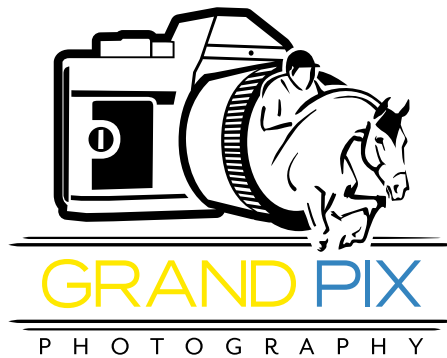
HORSEPLAYBEND.COM

1531 NE 3RD STREET BEND, OR 97701 • 541-382-2341 • FOLLOW US! @horseplaybend

*some premium brand restrictions may apply

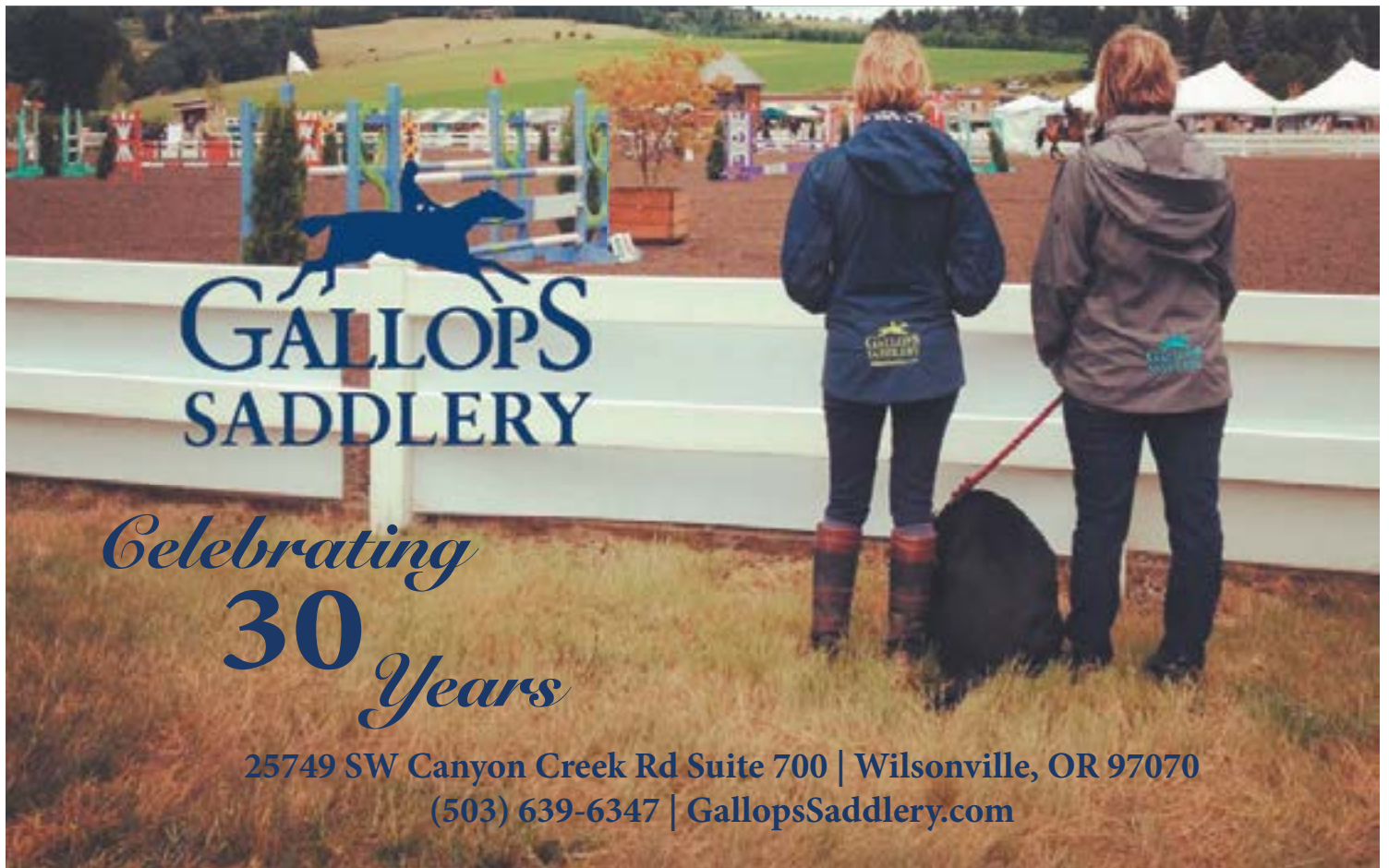


GrandPix was established by Javi Varela in 2016 with the goal of being the West Coast premier equestrian show Photography company. Our original style and talented staff has set us apart from



other photographers. We pride ourselves in offering our clients unique memories of their best moments in the show ring, while simultaneously providing unparalleled customer service





Directions to Hunter Creek Equestrian Park
14441 SW Wilsonville Rd, Wilsonville, OR 97070

From Interstate 5, take Wilsonville exit 283. Turn West (left if headed north, right if headed south). Continue 3.5 miles. Hunter Creek Farm will be on your right.

TAKE2
SECOND CAREER THOROUGHBRED PROGRAM

Entries Close June 15

Team NW Entry Blank 2022

Entries Close June 15

NUMBER

ONE HORSE PER FORM

OWNER

Name _____
Address _____
City, state, zip _____
Email _____
Phone _____ USEF/USHJA# _____

PRIZE MONEY PAYEE

Name _____
Address _____
City, state, zip _____
Tax ID # _____

ENTRIES CLOSE June 16, 2021

Please direct all questions to:
Mollie Galloway, show secretary (541) 914-0052

Arrival _____ Emergency phone # _____

RIDER ONE
Name _____
Address _____
City, state, zip _____
Email _____
Phone _____ USEF/USHJA# _____ ASPCA# _____ OHJA# _____
Birthday _____

RIDER TWO
Name _____
Address _____
City, state, zip _____
Email _____
Phone _____ USEF/USHJA# _____ ASPCA# _____ OHJA# _____
Birth day _____

CREDIT CARD INFORMATION
Name _____ Address _____ City, state, zip _____ Email _____ VISA/MC # _____ Expiration _____ 3 Digit Code _____ Signature _____

*3% convenience fee charged for all credit cards.

HORSE NAME

Color Sex Ht. Age Green 1 2 Horse/Pony Sm Med Lg

Usch # Rider One JR AM PRO Rider Two JR AM PRO

Rider 1 Classes Rider 2 Classes

\$30 Horse Deposit.....\$ _____
Stalls/tack rooms @ \$275\$ _____
\$50 Meadow disposal fee.....\$ _____
High Jumper Nominating Fee @ \$150\$ _____
Low Jumper Nominating Fee @ \$50.. \$ _____
Hunter/EQ Nominating Fee @ \$50 \$ _____
Schooling/grounds/office/livesteam \$50\$ _____
USEF Fee \$23 (\$15 D&M, \$8 USEF)....\$ _____
USHJA Zone Fee \$7.....\$ _____
USEF Show Pass @\$45 person.....\$ _____
USHJA Show Pass @\$30 person.....\$ _____
Haul in @ \$50 per day.....\$ _____
Non showing horse @ \$50\$ _____
RV hookups @ \$300\$ _____
TOTAL ENCLOSURE.....\$ _____

Country Classic Preview - July 7-10, 2022

Country Classic - July 13-17, 2022

All entries are to be submitted online at www.showgroundslive.com
\$300 deposit required per entry - a 3% convenience fee will be charged



FEDERATION ENTRY AGREEMENT

By entering a Federation-licensed Competition and signing this entry blank as the Owner, Lessee, Trainer, Manager, Agent, Coach, Driver, Rider, Handler, Vaulteur or Longeur and on behalf of myself and my principals, representatives, employees and agents, I agree that I am subject to the Bylaws and Rules of The United States Equestrian Federation, Inc. (the "Federation") and the local rules of _____ (Competition). I agree to be bound by the Bylaws and Rules of the Federation and of the competition. I will accept as final the decision of the Hearing Committee on any question arising under the Rules, and agree to release and hold harmless the competition, the Federation, their officials, directors and employees for any action taken under the Rules. I represent that I am eligible to enter and/or participate under the Rules, and every horse I am entering is eligible as entered. I also agree that as a condition of and in consideration of acceptance of entry, the Federation and/or the Competition may use or assign photographs, videos, audios, cable - casts, broadcasts, internet, film, new media or other likenesses of me and my horse taken during the course of the competition for the promotion, coverage or benefit of the competition, sport, or the Federation. Those likenesses shall not be used to advertise a product and they may not be used in such a way as to jeopardize amateur status. I hereby expressly and irrevocably waive and release any rights in connection with such use, including any claim to compensation, invasion of privacy, right of publicity, or to misappropriation. The construction and application of Federation rules are governed by the laws of the State of New York, and any action instituted against the Federation must be filed in New York State. See GR908.4.

BY SIGNING BELOW, I AGREE that I have read, understand, and agree to be bound by all applicable Federation Bylaws, rules, and policies including the USEF Safe Sport Policy and Minor Athlete Abuse Prevention Policies (MAAPP) as published at www.usef.org, as amended from time to time, as well as all terms and provisions of this Prize List. If I am signing and submitting this Agreement electronically, I acknowledge that my electronic signature shall have the same validity, force and effect as if I affixed my signature by my own hand.

RIDER/DRIVER/HANDLER/VAULTER/LONGEUR (mandatory)

Signature: _____

Print Name: _____

TRAINER (mandatory)

Signature: _____

Print Name: _____

OWNER/AGENT (mandatory)

Signature: _____

Print Name: _____

COACH (if applicable)

Signature: _____

Print Name: _____

Parent/Guardian Signature: (Required if Rider/Driver/Handler/Vaulteur/Longeur is a minor) _____

Print Parent//Guardian Name: _____ Emergency Contact Phone No. _____

Is Rider/Driver/Vaulteur a U.S. Citizen: ☐ Yes ☐ No



WAIVER AND RELEASE OF LIABILITY, ASSUMPTION OF RISK AND INDEMNITY AGREEMENT

For and in consideration of United States Equestrian Federation, Inc. dba US Equestrian ("USEF") allowing me, the undersigned, to participate in any capacity (including as a rider, driver, handler, vaulter, longeur, lessee, owner, agent, coach, official, trainer or volunteer) in a USEF sanctioned, licensed or approved event or activity, including but not limited to equestrian clinics, practices, shows, competitions and related or incidental activities and ("USEF Event" or "USEF Events"); I, for myself, and on behalf of my spouse, children, heirs and next of kin, and any legal and personal representatives, executors, administrators, successors,, and assigns, hereby agree to and make the following contractual representations pursuant to this Agreement (the "Agreement"):

A. RULES AND REGULATIONS: I hereby agree that I have read, understand, and agree to be bound by all applicable Federation Bylaws, rules, and policies including the USEF Safe Sport Policy and Minor Athlete Abuse Prevention Policies (MAAPP) as published at www.usef.org, as amended from time to time.

B. ACKNOWLEDGMENT OF RISK: I knowingly, willingly, and voluntarily acknowledge the inherent risks associated with the sport of equestrian and know that horseback riding and related equestrian activities are inherently dangerous, and that participation in any USEF Event involves risks and dangers including, without limitation, the potential for serious bodily injury (including broken bones, head or neck injuries), sickness and disease (including communicable diseases), trauma, pain & suffering, permanent disability, paralysis and death; loss of or damage to personal property (including my mount & equipment) arising out of the unpredictable behavior of horses; exposure to extreme conditions and circumstances; accidents involving other participants, event staff, volunteers or spectators; contact or collision with other participants and horses, natural or manmade objects; adverse weather conditions; facilities issues and premises conditions; failure of protective equipment (including helmets); inadequate safety measures; participants of varying skill levels; situations beyond the immediate control of the USEF Event organizers and competition management; and other undefined, not readily foreseeable and presently unknown risks and dangers ("Risks").

EQUINE ACTIVITY LIABILITY ACT WARNING:

CAUTION: HORSEBACK RIDING AND EQUINE ACTIVITIES CAN BE DANGEROUS. RIDE AT YOUR OWN RISK.

Under the laws of most States, an equine activity sponsor or equine professional is not liable for any injury to, or the death of, a participant in equine activities resulting from the inherent risks of equine activities.

C. ASSUMPTION OF RISK: I understand that the aforementioned Risks may be caused in whole or in part or result directly or indirectly from the negligence of my own actions or inactions, the actions or inactions of others participating in the USEF Events, or the negligent acts or omissions of the Released Parties defined below, and I hereby voluntarily and knowingly assume all such Risks and responsibility for any damages, liabilities, losses, or expenses that I incur as a result of my participation in any USEF Events. I also agree to be responsible for any injury or damage caused by me, my horse, my employees or contractors under my direction and control at any USEF Event.

D. WAIVER AND RELEASE OF LIABILITY, HOLD HARMLESS AND INDEMNITY: In conjunction with my participation in any USEF Event, I hereby release, waive and covenant not to sue, and further agree to indemnify, defend and hold harmless the following parties: USEF, USEF Recognized Affiliate Associations, the United States Olympic & Paralympic Committee (USOPC), USEF clubs, members, Event participants (including athletes/riders, coaches, trainers, judges/officials, and other personnel), the Event owner, licensee, and competition managers; the promoters, sponsors, or advertisers of any USEF Event; any charity or other beneficiary which may benefit from the USEF Event; the owners, managers, or lessors of any facilities or premises where a USEF Event may be held; and all directors, officers, employees, agents, contractors, and volunteers of any of the aforementioned parties (**Individually and Collectively, the "Released Parties" or "Event Organizers"**), with respect to any liability, claim(s), demand(s), cause(s) of action, damage(s), loss, or expense (including court costs and reasonable attorney fees) of any kind or nature ("**Liability**") which may arise out of, result from, or relate in any way to my participation in the USEF Events, including claims for Liability caused in whole or in part by the negligent acts or omissions of the Released Parties.

E. COMPLETE AGREEMENT AND SEVERABILITY CLAUSE: This Agreement represents the complete understanding between the parties regarding these issues and no oral representations, statements or inducements have been made apart from this Agreement. If any provision of this Agreement is held to be unlawful, void, or for any reason unenforceable, then that provision shall be deemed severable from this Agreement and shall not affect the validity and enforceability of any remaining provisions.

I HAVE CAREFULLY READ THIS DOCUMENT IN ITS ENTIRETY, UNDERSTAND ALL OF ITS TERMS AND CONDITIONS, AND KNOW IT CONTAINS AN ASSUMPTION OF RISK, RELEASE AND WAIVER FROM LIABILITY, AS WELL AS A HOLD HARMLESS AND INDEMNIFICATION OBLIGATIONS.

By signing below, I (as the participant or as the Parent/Legal Guardian of the minor identified below) hereby accept and agree to the terms and conditions of this Agreement in connection with my (or the minor's) participation in any USEF Event. If, despite this Agreement, I, or anyone on my behalf or the minor's behalf, makes a claim for Liability against any of the Released Parties, I will indemnify, defend and hold harmless each of the Released Parties from any such Liabilities as the result of such claim.

The parties agree that this agreement may be electronically signed. The parties agree that the electronic signatures appearing on this agreement are the same as handwritten signatures for the purposes of validity, enforceability, and admissibility.

☐ RIDER/DRIVER/HANDLER/VAULTER/LONGEUR ☐ OWNER ☐ TRAINER ☐ OFFICIAL ☐ STAFF ☐ VOLUNTEER ☐ COACH (IF APPLICABLE)

Signature: _____ Date: _____

Print Name: _____

Parent/Guardian Signature: (Required if Rider/Driver/Handler/Vaulter/Longeur is a minor) _____ Date: _____

Print Parent//Guardian Name: _____ Emergency Contact Phone No. _____

6.17.20

RULES & REGULATIONS

COVID-19 Protocol- Anyone with a fever, cough, shortness of breath or sore throat is not allowed on the site. Maintain social distancing of 6 feet or one horse length at all times. No more than one person at a time will be allowed within 6 feet of ingate/staff. We encourage everyone to wear mask or face covering. We encourage everyone to enter online or mail entry forms to cut down on correspondence with staff. Only one representative per barn will be allowed in the office. It is the responsibility of any person entering the site to follow the USEF Best Practices and the Oregon State Covid-19 Guidelines.

USEF ENTRY AGREEMENT

By entering a Federation-licensed Competition and signing this entry blank as the Owner, Lessee, Trainer, Manager, Agent, Coach, Driver, Rider, Handler, Vaulteur or Longeur and on behalf of myself and my principals, representatives, employees and agents, I agree that I am subject to the Bylaws and Rules of The United States Equestrian Federation, Inc. (the "Federation") and the local rules of (Competition). I agree to be bound by the Bylaws and Rules of the Federation and of the competition. I will accept as final the decision of the Hearing Committee on any question arising under the Rules, and agree to release and hold harmless the competition, the Federation, their officials, directors and employees for any action taken under the Rules. I represent that I am eligible to enter and/or participate under the Rules, and every horse I am entering is eligible as entered. I also agree that as a condition of and in consideration of acceptance of entry, the Federation and/or the Competition may use or assign photographs, videos, audios, cable - casts, broadcasts, internet, film, new media or other likenesses of me and my horse taken during the course of the competition for the promotion, coverage or benefit of the competition, sport, or the Federation. Those likenesses shall not be used to advertise a product and they may not be used in such a way as to jeopardize amateur status. I hereby expressly and irrevocably waive and release any rights in connection with such use, including any claim to compensation, invasion of privacy, right of publicity, or to misappropriation. The construction and application of Federation rules are governed by the laws of the State of New York, and any action instituted against the Federation must be filed in New York State. See GR908.4.

USEF MEMBERSHIP STATEMENT

Life, senior active and junior active members shall be eligible to participate in all classes at Regular Competitions, Eventing Competitions at the Modified Level or above and Combined Driving Competitions at the Advanced Level, Dressage, Reining and Vaulting Competitions and Endurance Rides. A nonmember may participate as a handler, rider, driver, owner, lessee, agent, coach or trainer at Regular Competitions, Eventing Competitions, Dressage Competitions, Reining Competitions and Combined Driving Competitions upon payment of a \$45 Show Pass fee. Participants in the following classes are exempted from the Requirements of this rule: 1) leadline; 2) exhibitions; 3) games and races; 4) classes for 4-H members; 5) walk trot (exception: Friesian performance FR222) and academy classes (academy classes are classes limited to horses used regularly in a lesson program); 6) USDF introductory level tests, pas de deux and quadrille classes; 7) NRHA Endorsed Reining Competitions. 8) Opportunity classes, 9) citizens of other nations who have proof, in English, of current membership in good standing of their own National Federation, 10) USEA beginner novice division; and 11) assistant handlers in Dressage Sport Horse Breeding classes.

EVERY CLASS OFFERED HEREIN WHICH IS COVERED BY THE RULES AND SPECIFICATIONS OF THE CURRENT FEDERATION RULE BOOK WILL BE CONDUCTED AND JUDGED IN ACCORDANCE THEREWITH.

Every horse entered herein for competition will be under the control of the Horse Show Management, but the Show Management will in no case be responsible for any loss or damage that may occur, and it shall be a condition of entry that each exhibitor shall hold the horse show and the officials, employees, directors, officers, sponsoring entities of the horse show and the facilities at which the horse show is held blameless for any loss or accident to his horse(s), employee(s), or equipment which may occur from sickness, fire or other cause.

The horse show policies herein stated regarding scratches and refunds will be followed regardless of weather and in place of GR 912 and GR 832.

ASSUMPTION OF RISK: By signing the entry blank, the Owner, Lessee, Trainer, Manager, Agent, Coach, Driver, Rider, Handler, Vaulteur, or Longeur acknowledges that horseback riding, particularly jumping, is a dangerous activity and involves inherent risks that may cause serious injury and in some cases death because of the unpredictable nature and irrational behavior of horses, regardless of their training and past performance and expressly assumes all such inherent risks whether identified herein, in the entry blank or in the Federation Rules and Regulations. A horse, without warning or any apparent cause, can buck, stumble, fall, rear, bite, kick, run, make unpredictable movements, spook, jump obstacles, step on a person's foot, or push a person-- all of which may cause injury to an observer or rider or to another horse-- a loose horse can run at full gallop in a panic and run into objects or persons or other horses. The Show Ground Facilities are bordered by highways/ roads and thus noise from traffic and other sources occurs that can and will cause a horse to unexpectedly spook or react quickly. The Show Ground Facilities contain roads and driveways that are traversed by cars, golf carts, tractors, trailers, and heavy equipment, all of which may spook a horse. The above warnings and risks are meant as an example of some of the risks that are inherent and may be encountered but it is agreed this is not an exhaustive list and there are numerous additional conditions and/or events that may result in injuries while participating in the Competition and/or being present on the Show Ground Facilities. **Reminder: all USEF Life and Senior Active members, as well as participants who have regular contact with minor athletes, are required to comply with the, U.S. Center for SafeSport training requirement to be eligible to participate in the competition. All participants must adhere to the U.S. Center for SafeSport Code, USEF Safe Sport Policy, and the Minor Athlete Abuse Prevention Policies. More information about these can be found at www.usef.org.**

ENTRY PROCEDURE

CLOSING DATE OF ENTRIES: ENTRY FORMS MUST BE RECEIVED, VIA SHOWGROUNDSLIVE.COM, BY THE DATE LISTED ON THE ENTRY BLANK FOR EACH RESPECTIVE SHOW.

Entry Blank Requirements:

1. All horses on the grounds must be registered on an entry blank including horses not entered in classes. One entry blank per horse.
2. Entry forms must be completed with owner, riders, trainers and payee information including association membership numbers on showgroundslive.com.
3. Date of Birth of all minor exhibitors.
4. Signatures of owner, riders, trainer and parent or guardian of minor exhibitors. Parents or guardians of minor exhibitors shall hold the Horse Show, Team NW Equestrian Sports, LLC, and staff harmless for injury to such minor(s).
5. USEF name of horse, correct description of horse and USHJA ID number.
6. Classes may only be entered or declared by using a class number. Classes must be entered on showgroundslive.com.

RULES & REGULATIONS

7. For all horses, the Horse Deposit fee and Stall fee must be paid by a credit card (Visa or Mastercard only) on showgroundslive.com. Each transaction will be charged a 3% convenience fee. Rider/Trainer/Owner agrees that Horse Show Management is authorized to charge the credit card pursuant to the information contained in the entry blank at the conclusion of the Competition.
8. If entry blanks are received prior to the closing date of entries AND are properly filled out, the Horse Deposit fee will be credited to the entries due. LATE AND/OR IMPROPER ENTRIES WILL FORFEIT THE HORSE DEPOSIT FEE.
9. DO NOT make entries from the time schedule. Consult the Class Index. Time schedules are subject to change after the close of entries.
10. Non Showing horses must be declared on the entry blank and pay the Non Showing horse fee. Leaving the class area "blank" constitutes an entry and will be charged a scratch fee, if the horse does not show.
11. Post Entries will be accepted after the closing date of entries and during the show at regular fees plus Post Entry Fee (See Fee Schedule).
12. Coach. For purposes of these rules, a coach is defined as any adult or adults who receives remuneration for having or sharing the responsibility for instructing, teaching, schooling, or advising a rider, driver, handler or vaulter in equestrian skills.
13. All fees must be paid in U.S. funds via Visa or Mastercard for the Horse Deposit and Stall on showgroundslive.com. The balance on accounts may be paid by credit card or check at the completion of the show. All credit card charges will be charged a 3% convenience fee.

Office Check-in, Adds/Scratches, Eligibility and Check-out

1. The Show Office will be open schooling day from 8:30 a.m. to 5:00 p.m. and on show days from half an hour prior to start of classes until close of show.
2. A blank check or credit card is required at the time of check in before numbers will be issued.
3. Checks returned by the bank for any reason will incur a Returned Check Fee (See Fee Schedule), and will be re-deposited. In case the check is returned a second time, to retain entries all fees plus penalties must be paid by money order, cashier's check or cash prior to 4 p.m. the day before the show. In the event a check is returned by the bank after the completion of the show, it will be handled in accordance with USEF GR913.
4. Exhibitors are encouraged to close out their own accounts. Management will close Exhibitor Accounts that have not been settled at the conclusion of each show. Billing questions or refunds will not be considered.
5. Any exhibitor who does not compete in a class in which he/she is officially entered, and has not scratched the class in the Horse Show Office, will be billed for the class.
6. Horses showing in a class that they are not entered in will be billed double the entry fee for the class.
7. Exhibitors are responsible for their own errors and omissions and for knowing the cross entry restrictions for the divisions they are entered in. In the event of a violation of a cross entry restriction, the exhibitor will forfeit the entry fee, class placing and prize money award.
8. To be eligible for a stake class, the horse must have been entered, shown and judged in at least one over fences class in that section.
9. Measurement cards. Those competing in junior hunters, hunter ponies, jumper ponies and small hunters must possess a measurement card. If not, horse or pony must be measured by show steward before competing.
10. All class entries must be declared by 4:30 PM or ½ hour after the last class, whichever occurs first.
11. Late declarations will pay post entry penalties and may be required to work first in the order. Horses scratched the day of the class will remain responsible for the class fees in Special Classes. Classes entered on the entry blank constitute a declaration.
12. Equine Vaccinations. All horses whether competing or not are required to present the USEF Vaccination Record: Equine Influenza and Equine Herpes form found at www.usef.org/forms-pubs

Refunds & Scratches:

1. Before the closing date of entries full refunds will be given.
2. After the closing date of entries, the Horse Deposit, nominating fees and stall fee are not refundable.
3. After the show starts, with the official show vet's certificate only, entry refunds will be given less a Scratch Fee (see Fee Schedule) and fees for classes already held prior to notification at the horse show office, whether exhibited in or not. If the vet scratch involves a division fee for sections required by USEF to be held as a division, no refund will be issued for such division.
4. With a vet certificate, a new horse may be substituted for a scratched horse and be charged a Substitution Fee (see Fee Schedule) for the substitution.
5. Full credit will be given for classes scratched in the Horse Show Office PRIOR TO THE START of the class, EXCEPT for Special Classes.
6. In the event that a horse is vetted out, there will be no refund of stall or tack room fees.

Fee Schedule:

1. For every horse participating in any competition licensed by the Federation, a Federation fee will be collected (a portion of the fee shall be an Equine Drugs and Medication fee to provide for research, inspection, and enforcement of rules regarding use of medications and drugs; see GR407.1, .2 and .3). Exception: Horses entered in classes exempted from the Equine Drugs and Medication fee are also exempt from the balance of the Federation fee. A \$7 USHJA fee will be charged for each horse in performance and/or equitation classes at National and Premiere shows, and a \$2 USHJA fee per horse at Regional I and II shows. To be remitted to USHJA.
2. Post Entry Fee. Regular fees will be charged for all post entries plus a \$50/ horse Post Entry Fee.
3. Returned Check Fee. A check returned for any reason will incur a \$50 Returned Check Fee.
4. Scratch Fee. Horses scratched from the show will be charged a \$50 Scratch Fee.
5. Substitution Fee. Horses substituting for a scratched horse will be charged a \$25 substitution fee.
6. Haul-In Showing Fee: Horses not purchasing stalls will be charged a haul-in fee of \$50/day/horse.
7. Haul-In Schooling Fee: Horses hauling in to school will be charged \$150/horse.
8. Clean-Up Fee: Horses bringing in their own shavings will pay a \$50/stall/week clean-up fee.
9. Non Showing Horse Fee: Non showing horses will pay a \$50 non-showing horse fee.
10. Convenience Fee: all accounts closed with a credit card will pay a convenience fee of 3%.
11. High Jumper Nomination: Horses entered in any 1.20m or higher jumper class must pay a \$150 High Jumper Nominating Fee. This allows jumpers to add/scratch classes at no charge. Horses entered only in the YJC classes DO NOT have to pay the nominating fee.
12. Low Jumper Nomination: Horses or ponies entered in any Jumper classes below 1.20m, and YJC classes must pay a \$50 Low Jumper Nominating Fee. This allows jumpers to add/scratch classes at no charge.
13. Hunter/EQ Nomination: Horses or ponies entered in any hunter or equitation classes must pay a \$50 Hunter/EQ Nominating Fee. This allows hunters/equitation horses to add/scratch classes at no charge.

RULES & REGULATIONS

Awards and Prize Money.

1. All regular class winners will receive a Prize Ticket or trophy and ribbons thru 8th place, in addition to any prize money.
2. HUNTER Show Champion and Reserve: Hunter champion and reserve will be awarded to 2 of the 4 horses scoring the most points over fences. In addition, only these will receive full points for ribbons won under saddle and half points for ribbons won in the model. Points will be awarded: 10, 6, 4, 2, 1, 1/2.
3. JUMPER Show champion and Reserve: Jumper champion and reserve based on points awarded 10, 6, 4, 2, 1, 1/2. Exception: Junior/amateur jumper will be based on money won.
4. EQUITATION Show Champion and Reserve: Equitation champion and reserve based on points awarded: 5, 3, 2, 1.
5. Prize money will be paid by check made payable to the owner or payee listed on the entry form and mailed to the owner within thirty (30) days after the close of the show. NO PRIZE MONEY WILL BE MAILED UNLESS THE OWNER'S or PAYEE'S SOCIAL SECURITY/TAX ID NUMBER IS LISTED ON THE ENTRY FORM. **Prize money checks will be void and not reissued after 90 days.** Prize money in all classes, excluding Special Classes and Welcome Jumpers, will be divided 30%, 25%, 20%, 15%, 10%. Prize Money for Special Classes will be distributed as follows unless otherwise stated. Internal Revenue Service requires 30% of prize money won by foreign exhibitors to be withheld. Foreign exhibitors should apply for a US Social Security number and are required to complete a W-8 Certificate of Foreign Status Form.

\$	1	2	3	4	5	6	7	8	9	10
\$500	\$150	\$100	\$75	\$65	\$60	\$50				
\$1,000 Jumper	\$300	\$165	\$110	\$95	\$90	\$85	\$80	\$75		
\$1000 Hunter	\$300	\$220	\$150	\$100	\$80	\$60	\$50	\$40		
\$1,500	\$450	\$300	\$210	\$150	\$120	\$105	\$90	\$75		
\$2,000	\$600	\$400	\$280	\$200	\$160	\$140	\$120	\$100		
\$2,500	\$750	\$450	\$300	\$250	\$200	\$200	\$175	\$175		
\$4,000	\$1,200	\$800	\$560	\$400	\$320	\$280	\$240	\$200		
\$5,000	\$1,500	\$1,000	\$700	\$500	\$400	\$350	\$300	\$250		
\$9,500	\$2,850	\$1,900	\$1,330	\$950	\$760	\$665	\$570	\$475		
\$10,000	\$3,000	\$2,000	\$1,400	\$1,000	\$800	\$700	\$600	\$500		
\$15,000	\$4,500	\$3,000	\$2,250	\$1,500	\$900	\$750	\$600	\$600	\$450	\$450

Team NW International Hunter Derby

\$10,000- \$3,000, \$2,200, \$1,300, \$800, \$600, \$500, \$400, \$300, \$300, \$200, \$200, \$200

USHJA National Hunter Derby

\$2,500- \$750, \$550, \$325, \$200, \$150, \$125, \$100, \$75, \$75, \$50, \$50, \$50

Hillcrest Training Local Hunter Derby

\$1,000- \$300, \$165, \$110, \$95, \$90, \$85, \$80, \$75

USHJA Green Hunter Incentive Stake Class

\$1,000- \$300, \$220, \$130, \$80, \$60, \$50, \$40, \$30, \$30, \$20, \$20, \$20

GENERAL INFORMATION

1. Schooling and Haul-Ins - There is a mandatory Schooling/Office/Grounds fee. The arena will be available for schooling rounds on the day prior to the first day of the show from 9 a.m. to 5 p.m. See schedule for heights and times. Horses hauling in for Schooling will pay a fee and must sign a release Waiver. Horses hauling in for the day to show and not purchasing a stall will be charged a fee. Please see Fee Schedule for pricing.
2. Poling - Poling is prohibited.
3. Minors who do not have a valid driver's license which allows them to operate a motorized vehicle in the state in which they reside will not be permitted to operate a motorized vehicle of any kind, including, but not limited to, golf carts, motorcycles, scooters, or farm utility vehicles, on the competition grounds of licensed competitions. Minors who have a valid temporary license may operate the above described motorized vehicles as long as they are accompanied by an adult with a valid driver's license. The parent/legal guardian or individual who signs the entry blank as a parent or guardian of a minor operating a motorized vehicle in violation of this rule are solely responsible for any damages, claims, losses or actions resulting from that operation. Violations of this rule will be cause for penalties against those responsible for the child committing the offense. Wheelchairs and other mobility assistance devices for individuals with disabilities are exempt from this rule. The unsafe use of personal electronic transport devices, as determined by the competition officials and management in their sole discretion, that do not require a driver's license to operate, including but not limited to segways, hover boards, and single wheeled scooters is prohibited on competition grounds. Operating such devices in areas where people gather may be deemed "unsafe use" if there is a risk of harm to others. If the operator of the device is a minor, the parent/legal guardian or individual who signs the entry blank as a parent or guardian of a minor operating the device in violation of this rule is accountable and may be subject to penalties. Wheelchairs and other mobility assistance devices for individuals with disabilities are exempt from this rule. (GR 1301.7)
4. The unsafe use of personal electronic transport devices, as determined by the competition officials and management in their sole discretion, that do not require a driver's license to operate, including but not limited to segways, hover boards, and single wheeled scooters is prohibited on competition grounds. Operating such devices in areas 192 © USEF 2021 where people gather may be deemed "unsafe use" if there is a risk of harm to others. If the operator of the device is a minor, the parent/legal guardian or individual who signs the entry blank as a parent or guardian of a minor operating the device in violation of this rule is accountable and may be subject to penalties. Wheelchairs and other mobility assistance devices for individuals with disabilities are exempt from this rule. (GR 1301.8)
5. Dogs. All dogs must be under leash control at all times.
6. Sharps. Sharps containers will be placed in convenient places in the stabling area. Competition management may fine any individuals including trainers, owners, exhibitors, or their agents up to \$100 for improper disposal of needles or other sharp disposable instruments. (GR 1210.4)
7. Arenas, warm-up areas. Wilsonville – all arenas have all weather fiber and sand footing. Jumper arena is 170' x 350'; hunter arenas 150' x 300'; hunter derby arena 300'x300'; lunging arena 50,000 square feet; schooling/exercise areas 91,000 square feet.
8. Stabling: 10 x 10 temporary box stalls with full doors and natural/grass floors are provided. Stalls are available from 1:00 p.m. two days before the start of the show through 9 p.m. Sunday. Stalls and tack rooms for the duration of the show are priced for each show on the respective Entry Blank. Day stalls may also be available – please call Show Secretary. Bag shavings are available for purchase.
9. RV hookups. RV hookups for the duration of the show are available on a limited basis. See respective Entry Blank for pricing.

RULES & REGULATIONS

10. Clean-up Fee: Exhibitors supplying their own shavings at the show will pay a Clean-Up fee (see fee schedule).
11. Protective headgear. It is compulsory for all persons at Federation licensed hunter, jumper or hunter/ jumper competitions when mounted anywhere on the competition grounds, to wear properly fastened protective headgear which meets or exceeds ASTM (American Society for Testing and Materials)/SEI (Safety Equipment Institute) standards for equestrian use and carries the SEI tag. It must be properly fitted with harness secured. Exception: In Hunter or Jumper classes, adults may be allowed to remove their headgear while accepting prizes and during the playing of the National Anthem only; they must refasten their headgear prior to the lap of honor. A Show Committee must bar riders without protective headgear from entering the ring for classes in which protective headgear is required and may bar any entry or person from entering the ring if not suitably presented to appear before an audience.
12. Attire. Proper attire is required in all rings during competition.
13. Protests. Any rider, driver, handler, vaulter, longeur, exhibitor, owner, agent, trainer or parent of a junior exhibitor, or any life, senior or junior member present at the competition may file a protest with the show committee of a licensed competition or with the Federation hearing committee alleging violation of any Federation rule(s). The protest must be a) in writing; b) signed by the protester; c) addressed to show committee of the competition at which the alleged violation occurred, or to the hearing committee; d) accompanied by a deposit of \$200 if made by a Federation member or parent of a junior exhibitor member, or \$300 if made by a nonmember; e) received by the steward, member of the show committee, competition manager or secretary within 48 hours of the alleged violation. If made directly to the hearing committee, the protest must be received at the Federation office by the 10th business day following the last recognized day of the competition, or by the 10th business day following the date on which the alleged violation occurred if it occurred other than at a licensed competition.
14. Jumper orders. The order of go will be drawn and for jumper classes with a jump-off, horses will go in the original drawn order.
15. Time Allowed: The time allowed will be based on a speed of 360 yards per minute for pony jumpers, and 382 yards per minute for all the other sections unless otherwise noted, and may be adjusted accordingly.
16. Martingales: In jumper classes offered at 1.30m and below, there are no martingale restrictions when used in a conventional manner. JP111.1a.
17. Ties: Ties involving first place in jumper classes will be jumped off. Ties not involving first place will be decided upon by time unless otherwise stated.
18. Two Level Jumper Classes: Jumper classes may be combined and run as two level classes if lack of entries warrant. See JP 122.1c.
19. Zone Specifications: This competition is in USHJA Zone 9. Please see Zone 9 Specifications (MT, WY, ID, OR, WA) at www.ushja.org.
20. For the purposes of eligibility and cross entry corresponding heights are:

Height (metric equivalent height)	Corresponding JP/EQ metric Class fence heights used for Hunter and Equitation cross entry and eligibility
2'3" (.69 meters)	.70 meters
2'6" (.76 meters)	.75 meters
2'9" (.84 meters)	.85 meters
3'0" (.91 meters)	.90 meters
3'3" (1.00 meters)	1.00 meters
3'6" (1.07 meters)	1.10 meters
3'9" (1.14 meters)	1.15 meters
4'0" (1.22 meters)	1.20 meters
4'3" (1.30 meters)	1.30 meters
4'6" (1.37 meters)	1.40 meters

RULES & REGULATIONS

SPECIAL CLASS CONDITIONS:

Horses scratching from Special Classes are subject to the special class Scratch Fee. Scratching special classes AFTER 5 PM the day before the class results in forfeiture of all entry fees. Formal attire is required in all special classes. Special classes will not count toward show champion and reserve awards. Horses must have entered and shown in at least one other class at the horse show to be eligible for Special Classes.

Special Hunter Classes:

Team NW International Hunter Derby: This class will consist of two courses, a traditional hunter classic course and a handy hunter course. The top 12 horses from the First Round will be invited back for the Handy Round. A minimum of 10 horses MUST be entered in each derby for the respective class to run.

USHJA National Hunter Derby: This class will consist of two courses, a traditional hunter classic course and a handy hunter course. The top 12 horses from the First Round will be invited back for the Handy Round. A minimum of 10 horses MUST be entered in each derby for the respective class to run. Fences 3'0" with options to 3'5". For complete specs please visit www.ushja.org/competition/hunter/national-hunter-derby.

USHJA Green Hunter Incentive Stake: This is a two round class open to horses of any age that are eligible to compete as a Green 3'0", 3'3", 3'6" or 3'9" Hunter under Federation rules that are enrolled the USHJA Green Hunter Incentive Program. The first round will be the last over-fences class in the respective Green divisions. At least 12 horses, if available, must return for the second round. For complete membership and participation requirements, go to www.ushja.org/competition/hunter/green-hunter-incentive-program.

Hillcrest Training Local Hunter Derby: This class will consist of two courses, a traditional hunter classic course and a handy hunter course. The top 12 horses from the First Round will be invited back for the Handy Round. Open to Juniors and Amateurs. No cross entry into any hunter class with fences above 2'9" with the exception of the Large Pony Hunters. No cross entry into any jumper class with fences above 0.95m. Fences 2'6" with options to 2'9". A minimum of 10 horses MUST be entered in each derby for the respective class to run.

Special Jumper Classes:

Team NW Jumper Classics, Team NW Mini Prix and Welcome Jumper: Classes to be run under Table II Sec. 2(a). See class lists for show- specific jump height and prize money. NOTE: All of these classes MUST have at least 10 entries to run.

OHJA Medal Classes: Classes open to OHJA junior and amateur members in good standing. See OHJA Rule Book for specific information, available online at: www.oregonhunterjumper.org.

DIRECTIONS TO HUNTER CREEK EQUESTRIAN PARK:

14441 SW Wilsonville Rd., Wilsonville, OR 97070. From Interstate 5, take Wilsonville exit 283. Turn West (left if headed north, right if headed south). Continue 3.5 miles. Hunter Creek Farm will be on your right.

IMPORTANT WEBSITES

For updates to this prize list, visit www.teamnwquestriansports.com

For rules, regulations and specifications, visit www.usef.org, www.ushja.org and www.oregonhunterjumper.org

For entry forms, visit showgroundslive.com